

**TOWN OF TROPHY CLUB, TEXAS  
RESOLUTION NO. 2019-20**

**A RESOLUTION OF THE TOWN COUNCIL OF THE TOWN OF TROPHY CLUB, TEXAS ACCEPTING AN ANNUAL SERVICE AND ASSESSMENT PLAN UPDATE FOR AUTHORIZED SERVICES (EMERGENCY SERVICES) FOR THE TOWN OF TROPHY CLUB PUBLIC IMPROVEMENT DISTRICT NO. 1 (THE HIGHLANDS AT TROPHY CLUB); SETTING A DATE FOR A PUBLIC HEARING; AUTHORIZING THE PUBLICATION OF NOTICE AND DIRECTING THE MAILING OF NOTICES AS REQUIRED BY LAW; ENACTING OTHER PROVISIONS RELATING THERETO; AND PROVIDING AN EFFECTIVE DATE.**

**WHEREAS**, on March 16, 2007, the Town received a petition meeting the requirements of Sec. 372.005 of the Public Improvement District Assessment Act (the "Act") requesting the creation of a public improvement district over a portion of the area of the Town to be known as The Town of Trophy Club Public Improvement District No. 1(the "District"); and

**WHEREAS**, the petition contained the signatures of the owners of taxable property representing more than fifty percent of the appraised value of taxable real property liable for assessment within the District, as determined by the then current ad valorem tax rolls of the Denton Central Appraisal District and the signatures of property owners who own taxable real property that constitutes more than fifty percent of the area of all taxable property that is liable for assessment by the District; and

**WHEREAS**, on May 7, 2007, after due notice, the Town Council of the Town (the "Town Council") held the public hearing in the manner required by law on the advisability of the Improvement Projects and services described in the petition as required by Sec. 372.009 of the PID Act and made the findings required by Sec. 372.009(b) of the PID Act and, by Resolution No. 2008-08, adopted by a majority of the members of the Town Council, authorized the District in accordance with its finding as to the advisability of certain public improvement projects and services; and

**WHEREAS**, on May 18, 2007, the Town published notice of its authorization of the District in the Trophy Club Times, a newspaper of general circulation in the Town; and

**WHEREAS**, no written protests of the District from any owners of record of property within the District were filed with the Town Secretary within 20 days after May 18, 2007; and

**WHEREAS**, on May 21, 2007, the Council adopted a resolution (the "Cost Resolution") determining the total costs of the District improvements, directing the filing of a proposed assessment roll, and directing related action; and

**WHEREAS**, pursuant to Sections 372.013 and 372.014 of the PID Act, the Town Council has directed the preparation of a Service and Assessment Plan Update for Authorized Services for the District (the “Plan”), such Plan is attached hereto as **Exhibit “B”**, covers a period of at least five years, and defines the annual indebtedness and the projected costs of the Authorized Services, as identified and defined in the Plan; and

**WHEREAS**, the Plan Update includes an assessment plan that apportions the cost of the Authorized Services to be assessed against property in the District and such apportionment is made on the basis of special benefits accruing to the property because of the Authorized Services; and

**WHEREAS**, after determining the total cost of the Authorized Services, the Town Council directed the preparation of an Assessment Roll that states the assessment against each parcel of land in the District and such Assessment Roll is attached to and a part of the Plan; and

**WHEREAS**, the Town Council notes that the Plan and Assessment Roll may be amended with such changes as the Town Council deems appropriate before such Plan and Assessment Roll are adopted as final by the Town Council; and

**WHEREAS**, the Town has determined to call a public hearing regarding the levy of assessments pursuant to the Plan and the Assessment Roll pursuant to Section 372.016 of the Act; and

**WHEREAS**, the Town desires to publish notice of a public hearing to adopt the Plan and Assessment Roll in order to provide notice to all interested parties of the Town’s proposed levy of assessments against property in the District, pursuant to Section 372.016 of the Act; and

**WHEREAS**, the Town desires to file the Annual Service Plan Update and Assessment Roll with the Town Secretary such that they are available for public inspection pursuant to Section 372.016 of the Act.

**NOW, THEREFORE, BE IT RESOLVED BY THE TOWN COUNCIL OF THE TOWN OF TROPHY CLUB, TEXAS, THAT:**

**Section 1. Findings.** The findings and determinations set forth in the preambles hereto are hereby incorporated by reference for all purposes.

**Section 2. Calling Public Hearing.** The Town Council hereby calls a public hearing (the “Public Hearing”) for 7:00 p.m. on September 24, 2019 at the regular meeting place of the Town Council of the Town of Trophy Club, Texas, Trophy Club Town Hall, 1 Trophy Wood Drive, Trophy Club, Texas, to consider approving the Updated Plan, with such changes and amendments as the Town Council deems necessary, and the Assessment Roll with such amendments to the assessments on any parcel as the Town Council deems necessary. After all objections made at such hearing have been heard, the Town Council may (i) levy the assessments as special assessments against each parcel of property in the District as set forth in the proposed

Updated Plan and Assessment Roll; (ii) specify the method of payment of the assessment, and (iii) provide that assessments be paid in periodic installments. Notice of the hearing setting out the matters required by Section 372.016 of the Act shall be given by publication at least eleven (11) days before the date of the hearing, in a newspaper of general circulation in the Town. Notice of such hearing shall also be given by the mailing of a copy of the notice containing the information required by Section 372.016(b) of the Act at least eleven (11) days prior to the hearing to the current address of each owner of property liable for an assessment in the proposed Assessment Roll as reflected on the tax rolls of the Denton Central Appraisal District. All residents and property owners within the District, and all other persons, are hereby invited to appear in person, or by their attorney, and contend for or contest the Plan and the Assessment Roll, and the proposed assessments and offer testimony pertinent to any issue presented on the amount of the assessments, purpose of the assessments, special benefit of the assessments, and the costs of collection and the penalties and interest on delinquent assessments. At or on the adjournment of the hearing conducted pursuant to Section 372.016 on the proposed assessments, the Town Council must hear and pass on any objection to a proposed assessment. The Town Council may amend a proposed assessment on any parcel. The failure of a property owner to receive notice does not invalidate the proceeding.

**Section 3. Publication and Mailing of Notice.** The Town Council hereby directs Town Staff or designee to cause the publication of Notice of the Public Hearing substantially in the form attached as **Exhibit "A"**; such publication to occur at least eleven (11) days before the date of the hearing. Further, the Town Council hereby directs Town Staff to give Notice of Hearing by the mailing of a copy of the notice at least eleven (11) days prior to the hearing to the current address of each owner of property liable for an assessment in the proposed Assessment Roll as reflected on the tax rolls of the Denton Central Appraisal District.

**Section 4. Conduct of Public Hearing.** The Town Council shall convene at the location and at the time specified in the notice described above for the public hearing and shall conduct the public hearing in connection with its approval of the Plan and the Assessment Roll and the levy of the proposed assessments, including costs of collection and penalties and interest on delinquent assessments. At such public hearing, the Town Council will hear and pass on any objections to the Plan and the Assessment Roll and the levy of the proposed assessments (which objections may be written or oral). At or on the adjournment of the hearing, Council may amend a proposed assessment on any parcel. After all objections, if any, have been heard and passed upon, the Town may (i) levy the assessments as special assessments against each parcel of property in the District as set forth in the Plan and Assessment Roll, (ii) specify the method of payment of the assessment, and (iii) provide that the assessments be paid in periodic installments.

**Section 5.** Filing of Plan Update and Assessment Roll. The Plan Update and Assessment Roll shall be filed in the office of the Town Secretary and be made available to any member of the public who wishes to inspect the same. A copy of the Annual Service and Assessment Plan Update for Authorized Services is attached hereto and incorporated herein as **Exhibit “B”**.

**Section 6.** Effective Date. This Resolution shall become effective upon its passage in accordance with law.

**PASSED AND APPROVED** by the Town Council of the Town of Trophy Club, Texas, on this 10th day of September 2019.

---

C. Nick Sanders, Mayor  
Town of Trophy Club, Texas

ATTEST:

[SEAL]

APPROVED TO AS FORM:

---

Holly Fimbres, Town Secretary  
Town of Trophy Club, Texas

---

J. David Dodd III, Town Attorney  
Town of Trophy Club, Texas

**EXHIBIT "A"**  
**TOWN OF TROPHY CLUB**  
**NOTICE OF PUBLIC HEARING**

NOTICE IS HEREBY GIVEN THAT a public hearing will be conducted by the Town Council of the Town of Trophy Club, Texas on the 24<sup>th</sup> day of September, 2019 at 7:00 p.m. at the Municipal Building at 1 Trophy Wood Drive, Trophy Club, Texas 76262. The public hearing will be held to consider proposed assessments to be levied against the assessable property within THE TOWN OF TROPHY CLUB PUBLIC IMPROVEMENT DISTRICT NO. 1 (the "District") pursuant to the provisions of Chapter 372 of the Texas Local Government Code, as amended.

The general nature of the improvements are emergency services (the "Authorized Services"), including, without limitation, fire suppression and control, inspection services, arson investigations, hazardous material response, search and rescue, emergency recovery and extraction, pre-hospital medical stabilization or transportation of persons who are sick, injured, wounded, or otherwise incapacitated or helpless including basic life support ambulance services, advanced life support ambulance services, air ambulance services, and quick-response unit services provided by the Town. The Town has provided such services pursuant to an annual assessment within the District since 2007.

The total annual cost of the Authorized Services for the Town's Fiscal Year 2019-2020 is approximately \$506,789.

The boundaries of the District are described as follows:

The District includes approximately 609.683 acres located within the corporate limits of the Town of Trophy Club, Denton County, Texas. The District is generally located to the north of Oakmont Drive, Oak Hill Drive and the Quorum Condominiums, east of the Lakes Subdivision and Parkview Drive, south of the Corp of Engineers Property and west of the Town's eastern town limits. The District is more particularly described by metes and bounds and such description is available for inspection at Town Hall, 1 Trophy Wood Drive, Trophy Club, Texas 76262.

All written or oral objections will be considered at the public hearing.

A copy of the Service and Assessment Plan for Authorized Services and proposed Assessment Roll, which includes the assessments to be levied against each parcel in the District, is available for public inspection at the office of the Town Secretary, Town of Trophy Club, at 1 Trophy Wood Drive, Trophy Club, Texas 76262.

WITNESS MY HAND AND THE OFFICIAL SEAL OF THE TOWN, this 10<sup>th</sup> day of September, 2019.

/s/ Holly Fimbres  
Holly Fimbres, Town Secretary  
Town of Trophy Club, Texas

**EXHIBIT “B”**  
**ANNUAL SERVICE AND ASSESSMENT PLAN UPDATE FOR AUTHORIZED**  
**SERVICES (EMERGENCY SERVICES) FOR THE DISTRICT**



[www.FinanceDTA.com](http://www.FinanceDTA.com)

## ANNUAL SERVICE PLAN UPDATE (2019)

TOWN OF TROPHY CLUB

TROPHY CLUB PID NO. 1 (ESD2)

THE HIGHLANDS AT TROPHY CLUB

Report Date: SEPTEMBER 3, 2019

Public Finance  
Public-Private Partnerships  
Development Economics  
Clean Energy Bonds

*Newport Beach / San Jose / San Francisco / Riverside  
Dallas / Houston / Raleigh / Tampa*



[www.FinanceDTA.com](http://www.FinanceDTA.com)

8117 Preston Road, Suite 300  
Dallas, TX 75225

## **TOWN OF TROPHY CLUB**



### **ANNUAL SERVICE PLAN UPDATE (2019) TOWN OF TROPHY CLUB PUBLIC IMPROVEMENT DISTRICT NO. 1 (ESD2) THE HIGHLANDS AT TROPHY CLUB**

**Prepared for:**

**The Town of Trophy Club**

**1 Trophy Wood Drive**

**Trophy Club, TX 76262**



# TABLE OF CONTENTS

## SECTION

|     |                                                       |   |
|-----|-------------------------------------------------------|---|
| I   | PLAN DESCRIPTION AND DEFINED TERMS .....              | 1 |
| A   | Introduction.....                                     | 1 |
| B   | Definitions .....                                     | 1 |
| II  | PROPERTY INCLUDED IN THE PID .....                    | 3 |
| III | DESCRIPTION OF THE AUTHORIZED SERVICES .....          | 4 |
| IV  | SERVICE PLAN .....                                    | 5 |
| V   | ASSESSMENT PLAN.....                                  | 7 |
| VI  | MISCELLANEOUS PROVISIONS.....                         | 8 |
| A   | Amendments .....                                      | 8 |
| B   | Administration and Interpretation of Provisions ..... | 8 |
| C   | Severability.....                                     | 8 |

## APPENDICES

|            |                 |
|------------|-----------------|
| APPENDIX A | BOUNDARY MAP    |
| APPENDIX B | ASSESSMENT ROLL |

## **I PLAN DESCRIPTION AND DEFINED TERMS**

### **A Introduction**

On April 16, 2007, the Town of Trophy Club Town Council passed and approved a resolution approving and authorizing the creation of the Town of Trophy Club Public Improvement District No. 1 (the Highlands at Trophy Club) (the "PID") to finance certain public services (the "Authorized Services") for the benefit of certain property in the PID, all of which is located within the Town.

A service and assessment plan (the "Service and Assessment Plan") was prepared at the direction of the Town identifying the Authorized Services to be provided by the PID, an estimate of the cost of the Authorized Services for the 2007-08 fiscal year, and the manner of assessing the property in the PID for the costs of the Authorized Services. Pursuant to Sections 372.013, 372.014, and 372.015 of the Public Improvement District Act (the "PID Act"), the Service and Assessment Plan is to be reviewed and updated annually. The update of the Service and Assessment Plan (the "Annual Service and Assessment Plan Update") for 2019 includes the 2019 assessment roll (the "2019 Assessment Roll") identifying the assessments on each parcel, based on the method of assessment set forth in the Service and Assessment Plan. Section 372.015 of the PID Act states that the governing body of the municipality shall apportion the cost of an improvement to be assessed against property in an improvement district, and the apportionment shall be made on the basis of special benefits accruing to the property because of the improvement.

Capitalized terms used herein shall have the meanings ascribed to them in this section of the Annual Service and Assessment Plan Update.

### **B Definitions — The terms used herein shall have the following meanings:**

**"Annual Collection Costs"** mean the following actual or budgeted costs, as applicable, related to the annual collection costs of outstanding Assessments, including the costs or anticipated costs of: (i) computing, levying, collecting and transmitting the Assessments (whether by the Town or otherwise), (ii) the Town in any way related to the collection of the Assessments, including, without limitation, the administration of the PID, maintaining the record of the Assessments, including, without limitation, any associated legal expenses, the reasonable costs of other consultants and advisors and contingencies and reserves for such costs as deemed appropriate by the Town Council.

**"Assessed Property"** means, for any year, Parcels within the PID other than Non-Benefited Property.

**"Assessment"** means the assessment levied against a Parcel imposed pursuant to the Assessment Ordinance and the provisions herein, as shown on the Assessment Roll.

**"Assessment Ordinance"** means the Assessment Ordinance approved by the Town Council to approve the imposition of the Assessments.

**"Assessment Rate"** means the rate determined by dividing the costs of the Authorized

Services for a fiscal year plus the Annual Collection Costs by the taxable value of the Assessed Property (expressed in multiples of one hundred) for the same fiscal year.

**"Authorized Services"** mean those public services providing a special benefit to the Assessed Property and described in Section III herein and Section 372.003 of the PID Act.

**"Delinquent Collection Costs"** mean interest, penalties and expenses incurred or imposed with respect to any delinquent Assessments in accordance with §372.018(f) of the PID Act and the costs related to pursuing collection of a delinquent Assessment and foreclosing the lien against the assessed property, including attorneys' fees.

**"Non-Benefited Property"** means Parcels within the boundaries of the PID that accrue no special benefit from the Authorized Services, including Public Property and any other property exempt from regular property taxes.

**"Parcel"** means a parcel identified by a tax map identification number assigned by the Denton Central Appraisal District for real property tax purposes.

**"PID"** has the meaning set forth in Section I.A of this Annual Service and Assessment Plan Update.

**"PID Act"** means Texas Local Government Code Chapter 372, Improvement Districts in Municipalities and Counties, Subchapter A, Public Improvement Districts, as amended.

**"Public Property"** means property within the boundaries of the PID that is owned by the federal government, the State of Texas, the Town, a school district, a public utility provider or any other public agency.

**"Town"** means the Town of Trophy Club, Texas.

**"Town Council"** means the duly elected governing body of the Town.

## **II PROPERTY INCLUDED IN THE PID**

The Highlands of Trophy Club is located in the Town of Trophy Club within Denton County, Texas. The property in the PID consists of most of the property within The Highlands of Trophy Club planned development.

The Highlands of Trophy Club planned development contains approximately 696 acres, of which approximately 609 acres is within the PID. Approximately 49 acres is within the planned development but outside of the PID boundaries. This excluded property is located within Trophy Club Municipal District No. 1 (MUD 1). Approximately 38 acres of land designated for commercial uses are also within the planned development but not within the PID.

At completion, the PID is expected to consist of approximately 1,409<sup>1</sup> residential units, two parks, entry monuments, and associated rights-of-way, landscaping, and infrastructure necessary to provide roadways, drainage and utilities to the PID. The estimated number of lots is based upon the Planned Development Ordinance and the Developer's estimated highest and best use of the property within the PID.

---

<sup>1</sup> The original expected number of units was 1,474. The reclassification of the Neighborhood 8 units reduced the number of expected units by 65.

### **III DESCRIPTION OF THE AUTHORIZED SERVICES**

Pursuant to the PID Act, the services that may be provided by a PID include "special supplemental services for improvement and promotion of the district, including services relating to advertising, promotion, health and sanitation, water and wastewater, public safety, security, business recruitment, development, recreation, and cultural enhancement." (Section 372.003)

After analyzing the Authorized Services authorized by the PID Act, the Town has determined that emergency services (the "Authorized Services") should be undertaken by the Town and will be of special benefit to Assessed Property within the PID. These emergency services shall include, without limitation, fire suppression and control, inspection services, arson investigations, hazardous material response, search and rescue, emergency recovery and extraction, and pre-hospital medical stabilization or transportation of persons who are sick, injured, wounded, or otherwise incapacitated or helpless. Pre-hospital medical stabilization and transportation services include basic life support ambulance services, advanced life support ambulance services, air ambulance services, and quick-response unit services provided by the Town.

#### **IV SERVICE PLAN**

The PID Act requires that a service plan cover a period of at least five years. The plan shall be reviewed and updated annually for the purpose of determining the annual budget for improvements. The annual projected costs are shown in the following table (Table IV-A). This budget is based on the provision of emergency services to existing residents and businesses, including construction workers, within the PID.

**Table IV-1: Annual Projected Costs**

| <b>YEAR</b> | <b>ANNUAL<br/>PROJECTED COSTS OF<br/>AUTHORIZED SERVICES</b> | <b>ANNUAL<br/>COLLECTION COSTS<sup>2</sup></b> | <b>TOTAL COSTS</b> |
|-------------|--------------------------------------------------------------|------------------------------------------------|--------------------|
| 2019        | \$506,789.00                                                 | \$0                                            | \$506,789.00       |
| 2020        | \$506,789.00                                                 | \$0                                            | \$506,789.00       |
| 2021        | \$506,789.00                                                 | \$0                                            | \$506,789.00       |
| 2022        | \$506,789.00                                                 | \$0                                            | \$506,789.00       |
| 2023        | \$506,789.00                                                 | \$0                                            | \$506,789.00       |

The annual projected costs are subject to annual revision and shall be updated in the Annual Service and Assessment Plan Update to reflect any changes in the costs of the Authorized Services expected to be provided each year. The annual projected sources of funds to pay the costs of the Authorized Services are shown by the following table (Table IV-B).

<sup>2</sup> Annual Collections Costs will be paid by the Trophy Club Municipal Utility District.

**Table IV-2: Annual Projected Sources of Funds**

| YEAR | ASSESSMENTS <sup>3</sup> | ANNUAL INDEBTEDNESS<br>AND OTHER FUNDS | TOTAL<br>SOURCES OF FUNDS |
|------|--------------------------|----------------------------------------|---------------------------|
| 2019 | \$507,104.04             | \$0                                    | \$507,104.04              |
| 2020 | \$507,104.04             | \$0                                    | \$507,104.04              |
| 2021 | \$507,104.04             | \$0                                    | \$507,104.04              |
| 2022 | \$507,104.04             | \$0                                    | \$507,104.04              |
| 2023 | \$507,104.04             | \$0                                    | \$507,104.04              |

The projected sources of funds are subject to annual revision based on any changes in the costs of the Authorized Services to be provided to the PID. The sources of funds for the Authorized Services shown in **Table IV-B** shall be updated each year in the Annual Service and Assessment Plan Update to reflect any changes in the sources of funds.

<sup>3</sup> Total Assessment revenues of \$507,104.04 are greater than the costs of the Authorized Services due to the County's application of the Assessment rate to all property within PID No. 1, including personal property. Assessments attributable to personal property are refunded after payment.

## **V ASSESSMENT PLAN**

The PID Act requires the Town Council to apportion the cost of Authorized Services on the basis of special benefits conferred upon the property from the Authorized Services. The Act provides that the cost of Authorized Services may be assessed: (i) equally per front foot or square foot; (ii) according to the value of the property as determined by the governing body, with or without regard to improvements on the property; or (iii) in any other manner that results in imposing equal shares of the cost on property similarly benefited.

The Town Council has determined to apportion the costs of the Authorized Services "according to the value of the property as determined by the governing body." The costs of the Authorized Services will be assessed to all real property according to the certified tax roll each year, excluding only Non-Benefited Property. Personal property is not assessed.

The costs of the Authorized Services for the 2018-2019 fiscal year are estimated to be \$500,839.00. Annual Collection Costs of \$1,179.98 (1,439 parcels x \$0.82 per parcel) will be paid by the Trophy Club Municipal Utility District.

**Table V-1: Calculation of the Assessment Rate**

|                                              |                     |
|----------------------------------------------|---------------------|
| <b>Costs of Authorized Services</b>          | <b>\$506,789.00</b> |
| Gross Taxable Value of Assessed Property     | \$752,603,211.00    |
| Adjustment for Personal Property             | (\$890,138.00)      |
| Net Taxable Value of Assessed Property       | \$751,813,073.00    |
| Assessment Rate (Per \$100 of Taxable Value) | \$0.06738           |

The Assessment Rate shall be applied to each Parcel of Assessed Property to determine the Assessment to be collected for the 2018-2019 fiscal year. The Assessments shall be paid in the same manner and at the same time and subject to the same remedies upon the failure to pay, to the extent allowed by law, as regular ad valorem property taxes. Delinquent Assessments shall be subject to Delinquent Collection Costs.

The determination by the Town Council of the assessment methodology set forth above is the result of the discretionary exercise by the Town Council of its legislative authority and governmental powers and is conclusive and binding on the current and all future owners of the Assessed Property.



## **VI MISCELLANEOUS PROVISIONS**

### **A Amendments**

The Town Council reserves the right to the extent permitted by the Act to amend this Annual Service and Assessment Plan Update without notice under the Act and without notice to property owners of Parcels: (i) to correct mistakes and clerical errors; (ii) to clarify ambiguities; and (iii) to provide procedures for the collection and enforcement of Assessments, Collection Costs, and other charges imposed by the Annual Service and Assessment Plan Update.

### **B Administration and Interpretation of Provisions**

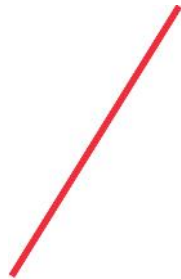
The Town Council shall administer the PID consistent with the PID Act and shall make all interpretations and determinations related to the application of this Annual Service and Assessment Plan Update unless stated otherwise herein or in the indenture of trust, and as long as there is a rational basis for the determination made by the Town, such determination shall be conclusive.

### **C Severability**

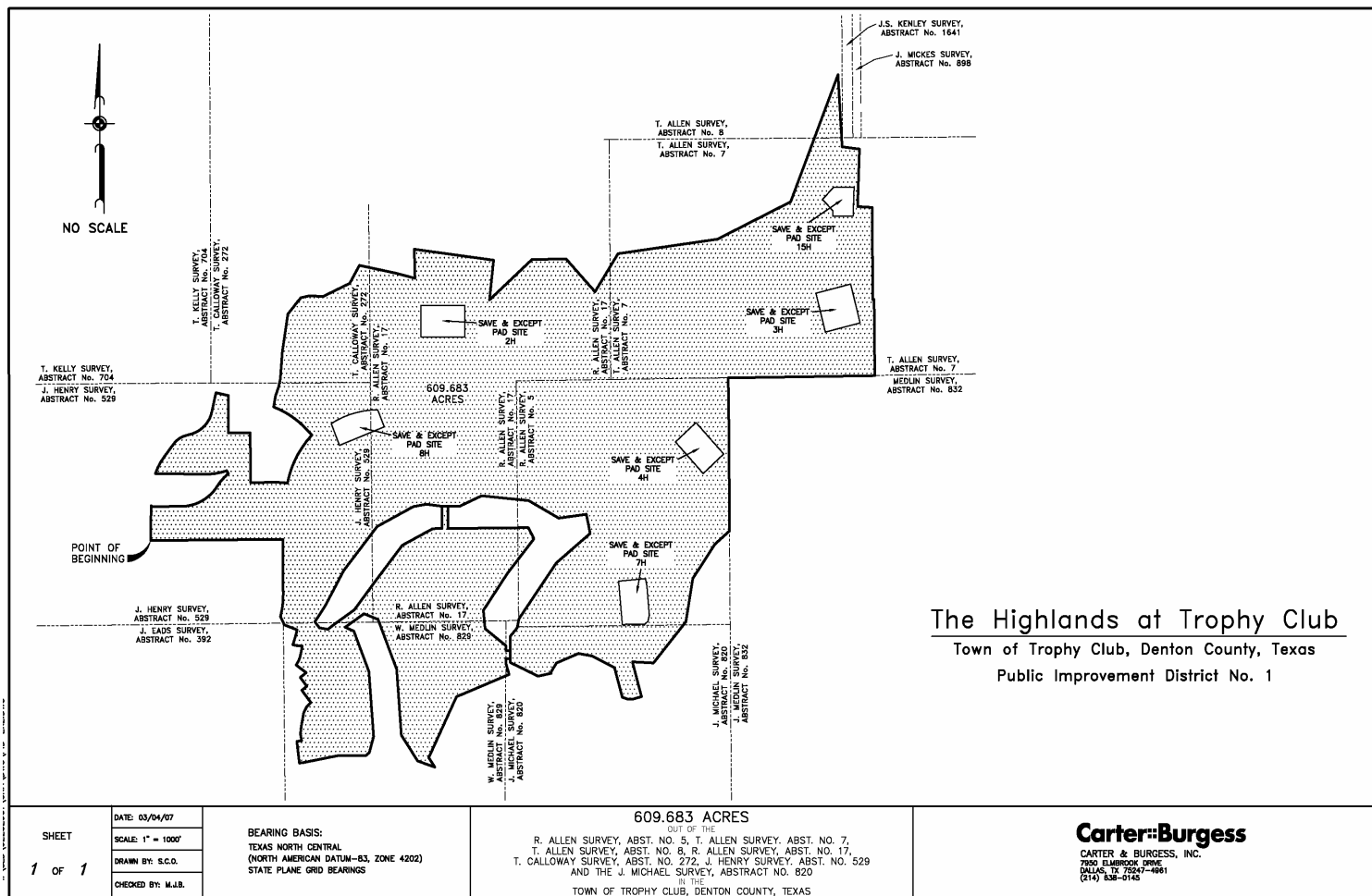
If any provision, section, subsection, sentence, clause or phrase of this Annual Service and Assessment Plan Update, or the application of same to a Parcel or any person or set of circumstances is for any reason held to be unconstitutional, void or invalid, the validity of the remaining portions of this Annual Service and Assessment Plan Update or the application to other persons or sets of circumstances shall not be affected thereby, it being the intent of the Town Council in adopting this Annual Service and Assessment Plan Update that no part hereof, or provision or regulation contained herein shall become inoperative or fail by reason of any unconstitutionality, voidness or invalidity of any other part hereof, and all provisions of this Annual Service and Assessment Plan Update are declared to be severable for that purpose.

## **APPENDIX A**

Town of Trophy Club  
Annual Service Plan Update (2019)  
Trophy Club Public Improvement District No. 1 (ESD2)



## **BOUNDARY MAP**



I:\SIB\022528\022528010\GDA\DWG\BID-FY2.dwg 4/4/2007 4:38:33 PM

## **APPENDIX B**

Town of Trophy Club  
Annual Service Plan Update (2019)  
Trophy Club Public Improvement District No. 1 (ESD2)



## **ASSESSMENT ROLL**

Appendix B

Town of Trophy Club  
Public Improvement District No. 1 (Emergency Services District)

2019 Assessment Roll  
Assessment Rate: \$0.06738 per \$100

| Parcel ID | FY 2019-2020 Assessment | Entity                                 |
|-----------|-------------------------|----------------------------------------|
| 67687     | \$4.75                  | TROPHY CLUB PID NO 1 EMERGENCY SERVICE |
| 82144     | \$115.17                | TROPHY CLUB PID NO 1 EMERGENCY SERVICE |
| 83515     | \$26.08                 | TROPHY CLUB PID NO 1 EMERGENCY SERVICE |
| 98639     | \$40.08                 | TROPHY CLUB PID NO 1 EMERGENCY SERVICE |
| 126407    | \$0.70                  | TROPHY CLUB PID NO 1 EMERGENCY SERVICE |
| 315393    | \$0.37                  | TROPHY CLUB PID NO 1 EMERGENCY SERVICE |
| 329833    | \$35.44                 | TROPHY CLUB PID NO 1 EMERGENCY SERVICE |
| 329944    | \$0.34                  | TROPHY CLUB PID NO 1 EMERGENCY SERVICE |
| 330332    | \$20.85                 | TROPHY CLUB PID NO 1 EMERGENCY SERVICE |
| 336888    | \$1.07                  | TROPHY CLUB PID NO 1 EMERGENCY SERVICE |
| 338637    | \$27.22                 | TROPHY CLUB PID NO 1 EMERGENCY SERVICE |
| 465509    | \$293.10                | TROPHY CLUB PID NO 1 EMERGENCY SERVICE |
| 465510    | \$253.98                | TROPHY CLUB PID NO 1 EMERGENCY SERVICE |
| 465511    | \$320.17                | TROPHY CLUB PID NO 1 EMERGENCY SERVICE |
| 465512    | \$263.33                | TROPHY CLUB PID NO 1 EMERGENCY SERVICE |
| 465513    | \$256.06                | TROPHY CLUB PID NO 1 EMERGENCY SERVICE |
| 465514    | \$302.43                | TROPHY CLUB PID NO 1 EMERGENCY SERVICE |
| 465515    | \$288.98                | TROPHY CLUB PID NO 1 EMERGENCY SERVICE |
| 465516    | \$254.02                | TROPHY CLUB PID NO 1 EMERGENCY SERVICE |
| 465517    | \$320.60                | TROPHY CLUB PID NO 1 EMERGENCY SERVICE |
| 465518    | \$261.32                | TROPHY CLUB PID NO 1 EMERGENCY SERVICE |
| 465519    | \$297.15                | TROPHY CLUB PID NO 1 EMERGENCY SERVICE |
| 465520    | \$144.42                | TROPHY CLUB PID NO 1 EMERGENCY SERVICE |
| 465521    | \$253.22                | TROPHY CLUB PID NO 1 EMERGENCY SERVICE |
| 465522    | \$257.39                | TROPHY CLUB PID NO 1 EMERGENCY SERVICE |
| 465523    | \$251.33                | TROPHY CLUB PID NO 1 EMERGENCY SERVICE |
| 465524    | \$295.03                | TROPHY CLUB PID NO 1 EMERGENCY SERVICE |
| 465525    | \$326.84                | TROPHY CLUB PID NO 1 EMERGENCY SERVICE |
| 465526    | \$270.30                | TROPHY CLUB PID NO 1 EMERGENCY SERVICE |
| 465527    | \$272.14                | TROPHY CLUB PID NO 1 EMERGENCY SERVICE |
| 465528    | \$305.97                | TROPHY CLUB PID NO 1 EMERGENCY SERVICE |
| 465529    | \$257.39                | TROPHY CLUB PID NO 1 EMERGENCY SERVICE |
| 465530    | \$290.65                | TROPHY CLUB PID NO 1 EMERGENCY SERVICE |
| 465531    | \$245.94                | TROPHY CLUB PID NO 1 EMERGENCY SERVICE |
| 465532    | \$292.32                | TROPHY CLUB PID NO 1 EMERGENCY SERVICE |
| 465533    | \$304.06                | TROPHY CLUB PID NO 1 EMERGENCY SERVICE |
| 465534    | \$264.86                | TROPHY CLUB PID NO 1 EMERGENCY SERVICE |
| 465535    | \$298.93                | TROPHY CLUB PID NO 1 EMERGENCY SERVICE |
| 465536    | \$280.82                | TROPHY CLUB PID NO 1 EMERGENCY SERVICE |
| 465537    | \$293.78                | TROPHY CLUB PID NO 1 EMERGENCY SERVICE |
| 465538    | \$296.08                | TROPHY CLUB PID NO 1 EMERGENCY SERVICE |
| 465539    | \$308.33                | TROPHY CLUB PID NO 1 EMERGENCY SERVICE |
| 465540    | \$328.74                | TROPHY CLUB PID NO 1 EMERGENCY SERVICE |
| 465541    | \$291.59                | TROPHY CLUB PID NO 1 EMERGENCY SERVICE |
| 465542    | \$254.22                | TROPHY CLUB PID NO 1 EMERGENCY SERVICE |
| 465543    | \$256.72                | TROPHY CLUB PID NO 1 EMERGENCY SERVICE |

|        |          |                                        |
|--------|----------|----------------------------------------|
| 465544 | \$302.35 | TROPHY CLUB PID NO 1 EMERGENCY SERVICE |
| 465545 | \$253.08 | TROPHY CLUB PID NO 1 EMERGENCY SERVICE |
| 465546 | \$260.81 | TROPHY CLUB PID NO 1 EMERGENCY SERVICE |
| 465547 | \$288.22 | TROPHY CLUB PID NO 1 EMERGENCY SERVICE |
| 465548 | \$296.45 | TROPHY CLUB PID NO 1 EMERGENCY SERVICE |
| 465549 | \$323.26 | TROPHY CLUB PID NO 1 EMERGENCY SERVICE |
| 465550 | \$259.20 | TROPHY CLUB PID NO 1 EMERGENCY SERVICE |
| 465551 | \$293.52 | TROPHY CLUB PID NO 1 EMERGENCY SERVICE |
| 465552 | \$253.35 | TROPHY CLUB PID NO 1 EMERGENCY SERVICE |
| 465553 | \$291.79 | TROPHY CLUB PID NO 1 EMERGENCY SERVICE |
| 465554 | \$253.35 | TROPHY CLUB PID NO 1 EMERGENCY SERVICE |
| 465555 | \$321.31 | TROPHY CLUB PID NO 1 EMERGENCY SERVICE |
| 465556 | \$291.08 | TROPHY CLUB PID NO 1 EMERGENCY SERVICE |
| 465557 | \$261.19 | TROPHY CLUB PID NO 1 EMERGENCY SERVICE |
| 465558 | \$159.95 | TROPHY CLUB PID NO 1 EMERGENCY SERVICE |
| 465559 | \$296.47 | TROPHY CLUB PID NO 1 EMERGENCY SERVICE |
| 465560 | \$303.76 | TROPHY CLUB PID NO 1 EMERGENCY SERVICE |
| 465561 | \$267.95 | TROPHY CLUB PID NO 1 EMERGENCY SERVICE |
| 465562 | \$293.62 | TROPHY CLUB PID NO 1 EMERGENCY SERVICE |
| 465563 | \$267.55 | TROPHY CLUB PID NO 1 EMERGENCY SERVICE |
| 465564 | \$296.47 | TROPHY CLUB PID NO 1 EMERGENCY SERVICE |
| 465565 | \$298.30 | TROPHY CLUB PID NO 1 EMERGENCY SERVICE |
| 465566 | \$306.58 | TROPHY CLUB PID NO 1 EMERGENCY SERVICE |
| 465567 | \$291.08 | TROPHY CLUB PID NO 1 EMERGENCY SERVICE |
| 465568 | \$256.13 | TROPHY CLUB PID NO 1 EMERGENCY SERVICE |
| 465569 | \$315.13 | TROPHY CLUB PID NO 1 EMERGENCY SERVICE |
| 465570 | \$296.71 | TROPHY CLUB PID NO 1 EMERGENCY SERVICE |
| 465571 | \$268.57 | TROPHY CLUB PID NO 1 EMERGENCY SERVICE |
| 465572 | \$286.37 | TROPHY CLUB PID NO 1 EMERGENCY SERVICE |
| 465573 | \$313.53 | TROPHY CLUB PID NO 1 EMERGENCY SERVICE |
| 465574 | \$342.65 | TROPHY CLUB PID NO 1 EMERGENCY SERVICE |
| 465575 | \$262.71 | TROPHY CLUB PID NO 1 EMERGENCY SERVICE |
| 465576 | \$296.47 | TROPHY CLUB PID NO 1 EMERGENCY SERVICE |
| 465577 | \$325.88 | TROPHY CLUB PID NO 1 EMERGENCY SERVICE |
| 465578 | \$294.78 | TROPHY CLUB PID NO 1 EMERGENCY SERVICE |
| 465579 | \$270.85 | TROPHY CLUB PID NO 1 EMERGENCY SERVICE |
| 465580 | \$323.77 | TROPHY CLUB PID NO 1 EMERGENCY SERVICE |
| 465581 | \$287.71 | TROPHY CLUB PID NO 1 EMERGENCY SERVICE |
| 465582 | \$149.57 | TROPHY CLUB PID NO 1 EMERGENCY SERVICE |
| 466259 | \$9.75   | TROPHY CLUB PID NO 1 EMERGENCY SERVICE |
| 466260 | \$0.65   | TROPHY CLUB PID NO 1 EMERGENCY SERVICE |
| 466261 | \$4.40   | TROPHY CLUB PID NO 1 EMERGENCY SERVICE |
| 469275 | \$363.85 | TROPHY CLUB PID NO 1 EMERGENCY SERVICE |
| 469276 | \$265.29 | TROPHY CLUB PID NO 1 EMERGENCY SERVICE |
| 469277 | \$509.79 | TROPHY CLUB PID NO 1 EMERGENCY SERVICE |
| 469278 | \$531.02 | TROPHY CLUB PID NO 1 EMERGENCY SERVICE |
| 469279 | \$578.36 | TROPHY CLUB PID NO 1 EMERGENCY SERVICE |
| 469280 | \$519.50 | TROPHY CLUB PID NO 1 EMERGENCY SERVICE |
| 469281 | \$392.15 | TROPHY CLUB PID NO 1 EMERGENCY SERVICE |
| 469282 | \$437.30 | TROPHY CLUB PID NO 1 EMERGENCY SERVICE |
| 469283 | \$398.70 | TROPHY CLUB PID NO 1 EMERGENCY SERVICE |
| 469284 | \$524.22 | TROPHY CLUB PID NO 1 EMERGENCY SERVICE |
| 469286 | \$373.27 | TROPHY CLUB PID NO 1 EMERGENCY SERVICE |
| 469287 | \$481.77 | TROPHY CLUB PID NO 1 EMERGENCY SERVICE |
| 469288 | \$544.58 | TROPHY CLUB PID NO 1 EMERGENCY SERVICE |
| 469289 | \$547.13 | TROPHY CLUB PID NO 1 EMERGENCY SERVICE |

|        |          |                                        |
|--------|----------|----------------------------------------|
| 469290 | \$525.56 | TROPHY CLUB PID NO 1 EMERGENCY SERVICE |
| 469291 | \$458.18 | TROPHY CLUB PID NO 1 EMERGENCY SERVICE |
| 469292 | \$521.56 | TROPHY CLUB PID NO 1 EMERGENCY SERVICE |
| 469293 | \$481.77 | TROPHY CLUB PID NO 1 EMERGENCY SERVICE |
| 469296 | \$512.09 | TROPHY CLUB PID NO 1 EMERGENCY SERVICE |
| 469297 | \$505.35 | TROPHY CLUB PID NO 1 EMERGENCY SERVICE |
| 469298 | \$464.92 | TROPHY CLUB PID NO 1 EMERGENCY SERVICE |
| 469299 | \$493.90 | TROPHY CLUB PID NO 1 EMERGENCY SERVICE |
| 469300 | \$492.55 | TROPHY CLUB PID NO 1 EMERGENCY SERVICE |
| 469301 | \$237.76 | TROPHY CLUB PID NO 1 EMERGENCY SERVICE |
| 469302 | \$498.61 | TROPHY CLUB PID NO 1 EMERGENCY SERVICE |
| 469303 | \$491.56 | TROPHY CLUB PID NO 1 EMERGENCY SERVICE |
| 469304 | \$461.55 | TROPHY CLUB PID NO 1 EMERGENCY SERVICE |
| 469305 | \$451.23 | TROPHY CLUB PID NO 1 EMERGENCY SERVICE |
| 469306 | \$385.09 | TROPHY CLUB PID NO 1 EMERGENCY SERVICE |
| 469307 | \$446.73 | TROPHY CLUB PID NO 1 EMERGENCY SERVICE |
| 469308 | \$379.36 | TROPHY CLUB PID NO 1 EMERGENCY SERVICE |
| 469309 | \$409.67 | TROPHY CLUB PID NO 1 EMERGENCY SERVICE |
| 469310 | \$482.78 | TROPHY CLUB PID NO 1 EMERGENCY SERVICE |
| 469311 | \$370.59 | TROPHY CLUB PID NO 1 EMERGENCY SERVICE |
| 469312 | \$345.81 | TROPHY CLUB PID NO 1 EMERGENCY SERVICE |
| 469313 | \$421.18 | TROPHY CLUB PID NO 1 EMERGENCY SERVICE |
| 469314 | \$333.00 | TROPHY CLUB PID NO 1 EMERGENCY SERVICE |
| 469315 | \$340.27 | TROPHY CLUB PID NO 1 EMERGENCY SERVICE |
| 469316 | \$473.33 | TROPHY CLUB PID NO 1 EMERGENCY SERVICE |
| 469317 | \$495.92 | TROPHY CLUB PID NO 1 EMERGENCY SERVICE |
| 469318 | \$390.27 | TROPHY CLUB PID NO 1 EMERGENCY SERVICE |
| 469319 | \$458.14 | TROPHY CLUB PID NO 1 EMERGENCY SERVICE |
| 469320 | \$412.37 | TROPHY CLUB PID NO 1 EMERGENCY SERVICE |
| 469321 | \$492.52 | TROPHY CLUB PID NO 1 EMERGENCY SERVICE |
| 469322 | \$496.71 | TROPHY CLUB PID NO 1 EMERGENCY SERVICE |
| 469323 | \$428.54 | TROPHY CLUB PID NO 1 EMERGENCY SERVICE |
| 469324 | \$439.99 | TROPHY CLUB PID NO 1 EMERGENCY SERVICE |
| 469325 | \$389.74 | TROPHY CLUB PID NO 1 EMERGENCY SERVICE |
| 469326 | \$428.54 | TROPHY CLUB PID NO 1 EMERGENCY SERVICE |
| 469327 | \$342.29 | TROPHY CLUB PID NO 1 EMERGENCY SERVICE |
| 469328 | \$409.67 | TROPHY CLUB PID NO 1 EMERGENCY SERVICE |
| 469329 | \$434.86 | TROPHY CLUB PID NO 1 EMERGENCY SERVICE |
| 469330 | \$431.05 | TROPHY CLUB PID NO 1 EMERGENCY SERVICE |
| 469331 | \$350.02 | TROPHY CLUB PID NO 1 EMERGENCY SERVICE |
| 469332 | \$426.75 | TROPHY CLUB PID NO 1 EMERGENCY SERVICE |
| 469333 | \$470.99 | TROPHY CLUB PID NO 1 EMERGENCY SERVICE |
| 469334 | \$413.04 | TROPHY CLUB PID NO 1 EMERGENCY SERVICE |
| 469335 | \$487.60 | TROPHY CLUB PID NO 1 EMERGENCY SERVICE |
| 469336 | \$488.34 | TROPHY CLUB PID NO 1 EMERGENCY SERVICE |
| 469337 | \$447.40 | TROPHY CLUB PID NO 1 EMERGENCY SERVICE |
| 470048 | \$309.45 | TROPHY CLUB PID NO 1 EMERGENCY SERVICE |
| 470049 | \$356.64 | TROPHY CLUB PID NO 1 EMERGENCY SERVICE |
| 470050 | \$305.23 | TROPHY CLUB PID NO 1 EMERGENCY SERVICE |
| 470051 | \$300.42 | TROPHY CLUB PID NO 1 EMERGENCY SERVICE |
| 470052 | \$323.98 | TROPHY CLUB PID NO 1 EMERGENCY SERVICE |
| 470053 | \$264.02 | TROPHY CLUB PID NO 1 EMERGENCY SERVICE |
| 470054 | \$332.18 | TROPHY CLUB PID NO 1 EMERGENCY SERVICE |
| 470055 | \$370.88 | TROPHY CLUB PID NO 1 EMERGENCY SERVICE |
| 470056 | \$321.18 | TROPHY CLUB PID NO 1 EMERGENCY SERVICE |
| 470057 | \$270.19 | TROPHY CLUB PID NO 1 EMERGENCY SERVICE |

|        |          |                                        |
|--------|----------|----------------------------------------|
| 470058 | \$293.10 | TROPHY CLUB PID NO 1 EMERGENCY SERVICE |
| 470059 | \$363.18 | TROPHY CLUB PID NO 1 EMERGENCY SERVICE |
| 470060 | \$383.96 | TROPHY CLUB PID NO 1 EMERGENCY SERVICE |
| 470062 | \$255.42 | TROPHY CLUB PID NO 1 EMERGENCY SERVICE |
| 470063 | \$323.18 | TROPHY CLUB PID NO 1 EMERGENCY SERVICE |
| 470064 | \$342.23 | TROPHY CLUB PID NO 1 EMERGENCY SERVICE |
| 470065 | \$370.89 | TROPHY CLUB PID NO 1 EMERGENCY SERVICE |
| 470066 | \$397.54 | TROPHY CLUB PID NO 1 EMERGENCY SERVICE |
| 470067 | \$383.19 | TROPHY CLUB PID NO 1 EMERGENCY SERVICE |
| 470068 | \$299.32 | TROPHY CLUB PID NO 1 EMERGENCY SERVICE |
| 470069 | \$271.03 | TROPHY CLUB PID NO 1 EMERGENCY SERVICE |
| 470070 | \$356.66 | TROPHY CLUB PID NO 1 EMERGENCY SERVICE |
| 470071 | \$291.76 | TROPHY CLUB PID NO 1 EMERGENCY SERVICE |
| 470072 | \$293.54 | TROPHY CLUB PID NO 1 EMERGENCY SERVICE |
| 470074 | \$307.25 | TROPHY CLUB PID NO 1 EMERGENCY SERVICE |
| 470075 | \$364.12 | TROPHY CLUB PID NO 1 EMERGENCY SERVICE |
| 470076 | \$359.25 | TROPHY CLUB PID NO 1 EMERGENCY SERVICE |
| 470077 | \$296.96 | TROPHY CLUB PID NO 1 EMERGENCY SERVICE |
| 470078 | \$400.70 | TROPHY CLUB PID NO 1 EMERGENCY SERVICE |
| 470079 | \$318.91 | TROPHY CLUB PID NO 1 EMERGENCY SERVICE |
| 470080 | \$343.89 | TROPHY CLUB PID NO 1 EMERGENCY SERVICE |
| 470081 | \$274.91 | TROPHY CLUB PID NO 1 EMERGENCY SERVICE |
| 470082 | \$324.77 | TROPHY CLUB PID NO 1 EMERGENCY SERVICE |
| 470083 | \$361.83 | TROPHY CLUB PID NO 1 EMERGENCY SERVICE |
| 470084 | \$332.93 | TROPHY CLUB PID NO 1 EMERGENCY SERVICE |
| 470085 | \$364.77 | TROPHY CLUB PID NO 1 EMERGENCY SERVICE |
| 470086 | \$346.33 | TROPHY CLUB PID NO 1 EMERGENCY SERVICE |
| 470087 | \$269.15 | TROPHY CLUB PID NO 1 EMERGENCY SERVICE |
| 470088 | \$278.28 | TROPHY CLUB PID NO 1 EMERGENCY SERVICE |
| 470089 | \$346.21 | TROPHY CLUB PID NO 1 EMERGENCY SERVICE |
| 470090 | \$333.53 | TROPHY CLUB PID NO 1 EMERGENCY SERVICE |
| 470091 | \$253.20 | TROPHY CLUB PID NO 1 EMERGENCY SERVICE |
| 470092 | \$279.58 | TROPHY CLUB PID NO 1 EMERGENCY SERVICE |
| 470093 | \$371.94 | TROPHY CLUB PID NO 1 EMERGENCY SERVICE |
| 470094 | \$343.64 | TROPHY CLUB PID NO 1 EMERGENCY SERVICE |
| 470095 | \$277.61 | TROPHY CLUB PID NO 1 EMERGENCY SERVICE |
| 470096 | \$314.07 | TROPHY CLUB PID NO 1 EMERGENCY SERVICE |
| 470097 | \$278.88 | TROPHY CLUB PID NO 1 EMERGENCY SERVICE |
| 470098 | \$253.07 | TROPHY CLUB PID NO 1 EMERGENCY SERVICE |
| 470099 | \$317.36 | TROPHY CLUB PID NO 1 EMERGENCY SERVICE |
| 470100 | \$310.21 | TROPHY CLUB PID NO 1 EMERGENCY SERVICE |
| 470101 | \$276.26 | TROPHY CLUB PID NO 1 EMERGENCY SERVICE |
| 470102 | \$252.77 | TROPHY CLUB PID NO 1 EMERGENCY SERVICE |
| 470103 | \$336.90 | TROPHY CLUB PID NO 1 EMERGENCY SERVICE |
| 470104 | \$320.06 | TROPHY CLUB PID NO 1 EMERGENCY SERVICE |
| 470105 | \$324.90 | TROPHY CLUB PID NO 1 EMERGENCY SERVICE |
| 470106 | \$320.91 | TROPHY CLUB PID NO 1 EMERGENCY SERVICE |
| 470107 | \$261.43 | TROPHY CLUB PID NO 1 EMERGENCY SERVICE |
| 470108 | \$364.03 | TROPHY CLUB PID NO 1 EMERGENCY SERVICE |
| 470109 | \$267.83 | TROPHY CLUB PID NO 1 EMERGENCY SERVICE |
| 470110 | \$327.01 | TROPHY CLUB PID NO 1 EMERGENCY SERVICE |
| 470111 | \$315.43 | TROPHY CLUB PID NO 1 EMERGENCY SERVICE |
| 470153 | \$338.85 | TROPHY CLUB PID NO 1 EMERGENCY SERVICE |
| 470154 | \$371.94 | TROPHY CLUB PID NO 1 EMERGENCY SERVICE |
| 470155 | \$438.28 | TROPHY CLUB PID NO 1 EMERGENCY SERVICE |
| 470156 | \$387.61 | TROPHY CLUB PID NO 1 EMERGENCY SERVICE |



|        |          |                                        |
|--------|----------|----------------------------------------|
| 470157 | \$394.19 | TROPHY CLUB PID NO 1 EMERGENCY SERVICE |
| 470158 | \$417.80 | TROPHY CLUB PID NO 1 EMERGENCY SERVICE |
| 470159 | \$395.81 | TROPHY CLUB PID NO 1 EMERGENCY SERVICE |
| 470160 | \$417.17 | TROPHY CLUB PID NO 1 EMERGENCY SERVICE |
| 470161 | \$400.24 | TROPHY CLUB PID NO 1 EMERGENCY SERVICE |
| 470162 | \$324.28 | TROPHY CLUB PID NO 1 EMERGENCY SERVICE |
| 470163 | \$336.78 | TROPHY CLUB PID NO 1 EMERGENCY SERVICE |
| 470164 | \$357.87 | TROPHY CLUB PID NO 1 EMERGENCY SERVICE |
| 470165 | \$383.80 | TROPHY CLUB PID NO 1 EMERGENCY SERVICE |
| 470166 | \$347.01 | TROPHY CLUB PID NO 1 EMERGENCY SERVICE |
| 470167 | \$402.26 | TROPHY CLUB PID NO 1 EMERGENCY SERVICE |
| 470168 | \$387.44 | TROPHY CLUB PID NO 1 EMERGENCY SERVICE |
| 470169 | \$387.19 | TROPHY CLUB PID NO 1 EMERGENCY SERVICE |
| 470170 | \$406.25 | TROPHY CLUB PID NO 1 EMERGENCY SERVICE |
| 470171 | \$386.09 | TROPHY CLUB PID NO 1 EMERGENCY SERVICE |
| 470172 | \$394.85 | TROPHY CLUB PID NO 1 EMERGENCY SERVICE |
| 470173 | \$400.91 | TROPHY CLUB PID NO 1 EMERGENCY SERVICE |
| 470174 | \$398.18 | TROPHY CLUB PID NO 1 EMERGENCY SERVICE |
| 470175 | \$396.87 | TROPHY CLUB PID NO 1 EMERGENCY SERVICE |
| 470176 | \$430.32 | TROPHY CLUB PID NO 1 EMERGENCY SERVICE |
| 470177 | \$342.25 | TROPHY CLUB PID NO 1 EMERGENCY SERVICE |
| 470178 | \$405.67 | TROPHY CLUB PID NO 1 EMERGENCY SERVICE |
| 470179 | \$392.83 | TROPHY CLUB PID NO 1 EMERGENCY SERVICE |
| 470180 | \$368.85 | TROPHY CLUB PID NO 1 EMERGENCY SERVICE |
| 470181 | \$374.30 | TROPHY CLUB PID NO 1 EMERGENCY SERVICE |
| 470182 | \$344.87 | TROPHY CLUB PID NO 1 EMERGENCY SERVICE |
| 470183 | \$352.18 | TROPHY CLUB PID NO 1 EMERGENCY SERVICE |
| 470184 | \$325.00 | TROPHY CLUB PID NO 1 EMERGENCY SERVICE |
| 470185 | \$313.20 | TROPHY CLUB PID NO 1 EMERGENCY SERVICE |
| 470186 | \$362.02 | TROPHY CLUB PID NO 1 EMERGENCY SERVICE |
| 470187 | \$338.74 | TROPHY CLUB PID NO 1 EMERGENCY SERVICE |
| 470188 | \$322.85 | TROPHY CLUB PID NO 1 EMERGENCY SERVICE |
| 470189 | \$426.18 | TROPHY CLUB PID NO 1 EMERGENCY SERVICE |
| 470190 | \$326.12 | TROPHY CLUB PID NO 1 EMERGENCY SERVICE |
| 470191 | \$377.99 | TROPHY CLUB PID NO 1 EMERGENCY SERVICE |
| 470192 | \$380.61 | TROPHY CLUB PID NO 1 EMERGENCY SERVICE |
| 470193 | \$361.75 | TROPHY CLUB PID NO 1 EMERGENCY SERVICE |
| 470194 | \$303.21 | TROPHY CLUB PID NO 1 EMERGENCY SERVICE |
| 470195 | \$333.51 | TROPHY CLUB PID NO 1 EMERGENCY SERVICE |
| 470196 | \$421.12 | TROPHY CLUB PID NO 1 EMERGENCY SERVICE |
| 470197 | \$386.44 | TROPHY CLUB PID NO 1 EMERGENCY SERVICE |
| 470198 | \$415.83 | TROPHY CLUB PID NO 1 EMERGENCY SERVICE |
| 470199 | \$365.33 | TROPHY CLUB PID NO 1 EMERGENCY SERVICE |
| 470200 | \$366.37 | TROPHY CLUB PID NO 1 EMERGENCY SERVICE |
| 470201 | \$337.57 | TROPHY CLUB PID NO 1 EMERGENCY SERVICE |
| 470202 | \$186.71 | TROPHY CLUB PID NO 1 EMERGENCY SERVICE |
| 470203 | \$336.90 | TROPHY CLUB PID NO 1 EMERGENCY SERVICE |
| 470204 | \$418.50 | TROPHY CLUB PID NO 1 EMERGENCY SERVICE |
| 470205 | \$433.93 | TROPHY CLUB PID NO 1 EMERGENCY SERVICE |
| 470249 | \$444.03 | TROPHY CLUB PID NO 1 EMERGENCY SERVICE |
| 470250 | \$417.81 | TROPHY CLUB PID NO 1 EMERGENCY SERVICE |
| 470251 | \$445.67 | TROPHY CLUB PID NO 1 EMERGENCY SERVICE |
| 470252 | \$401.58 | TROPHY CLUB PID NO 1 EMERGENCY SERVICE |
| 470253 | \$461.55 | TROPHY CLUB PID NO 1 EMERGENCY SERVICE |
| 470254 | \$419.30 | TROPHY CLUB PID NO 1 EMERGENCY SERVICE |
| 470255 | \$411.41 | TROPHY CLUB PID NO 1 EMERGENCY SERVICE |

|        |          |                                        |
|--------|----------|----------------------------------------|
| 470256 | \$474.83 | TROPHY CLUB PID NO 1 EMERGENCY SERVICE |
| 470257 | \$390.55 | TROPHY CLUB PID NO 1 EMERGENCY SERVICE |
| 470258 | \$416.77 | TROPHY CLUB PID NO 1 EMERGENCY SERVICE |
| 470259 | \$432.83 | TROPHY CLUB PID NO 1 EMERGENCY SERVICE |
| 470260 | \$445.97 | TROPHY CLUB PID NO 1 EMERGENCY SERVICE |
| 470261 | \$429.21 | TROPHY CLUB PID NO 1 EMERGENCY SERVICE |
| 470262 | \$378.68 | TROPHY CLUB PID NO 1 EMERGENCY SERVICE |
| 470263 | \$414.39 | TROPHY CLUB PID NO 1 EMERGENCY SERVICE |
| 470264 | \$489.85 | TROPHY CLUB PID NO 1 EMERGENCY SERVICE |
| 470265 | \$401.50 | TROPHY CLUB PID NO 1 EMERGENCY SERVICE |
| 470266 | \$406.98 | TROPHY CLUB PID NO 1 EMERGENCY SERVICE |
| 470267 | \$388.11 | TROPHY CLUB PID NO 1 EMERGENCY SERVICE |
| 470268 | \$455.49 | TROPHY CLUB PID NO 1 EMERGENCY SERVICE |
| 470270 | \$375.91 | TROPHY CLUB PID NO 1 EMERGENCY SERVICE |
| 470271 | \$407.90 | TROPHY CLUB PID NO 1 EMERGENCY SERVICE |
| 470272 | \$372.00 | TROPHY CLUB PID NO 1 EMERGENCY SERVICE |
| 470273 | \$400.80 | TROPHY CLUB PID NO 1 EMERGENCY SERVICE |
| 470274 | \$443.36 | TROPHY CLUB PID NO 1 EMERGENCY SERVICE |
| 470275 | \$388.11 | TROPHY CLUB PID NO 1 EMERGENCY SERVICE |
| 470276 | \$444.03 | TROPHY CLUB PID NO 1 EMERGENCY SERVICE |
| 470277 | \$375.60 | TROPHY CLUB PID NO 1 EMERGENCY SERVICE |
| 470278 | \$382.09 | TROPHY CLUB PID NO 1 EMERGENCY SERVICE |
| 470279 | \$422.47 | TROPHY CLUB PID NO 1 EMERGENCY SERVICE |
| 470280 | \$502.18 | TROPHY CLUB PID NO 1 EMERGENCY SERVICE |
| 470281 | \$412.06 | TROPHY CLUB PID NO 1 EMERGENCY SERVICE |
| 470282 | \$381.63 | TROPHY CLUB PID NO 1 EMERGENCY SERVICE |
| 470283 | \$351.02 | TROPHY CLUB PID NO 1 EMERGENCY SERVICE |
| 470284 | \$431.37 | TROPHY CLUB PID NO 1 EMERGENCY SERVICE |
| 470285 | \$445.38 | TROPHY CLUB PID NO 1 EMERGENCY SERVICE |
| 470286 | \$451.32 | TROPHY CLUB PID NO 1 EMERGENCY SERVICE |
| 470287 | \$446.73 | TROPHY CLUB PID NO 1 EMERGENCY SERVICE |
| 470288 | \$402.14 | TROPHY CLUB PID NO 1 EMERGENCY SERVICE |
| 470289 | \$293.56 | TROPHY CLUB PID NO 1 EMERGENCY SERVICE |
| 470290 | \$390.80 | TROPHY CLUB PID NO 1 EMERGENCY SERVICE |
| 470291 | \$367.06 | TROPHY CLUB PID NO 1 EMERGENCY SERVICE |
| 470292 | \$458.48 | TROPHY CLUB PID NO 1 EMERGENCY SERVICE |
| 470293 | \$473.17 | TROPHY CLUB PID NO 1 EMERGENCY SERVICE |
| 470294 | \$448.25 | TROPHY CLUB PID NO 1 EMERGENCY SERVICE |
| 470295 | \$447.92 | TROPHY CLUB PID NO 1 EMERGENCY SERVICE |
| 470296 | \$357.79 | TROPHY CLUB PID NO 1 EMERGENCY SERVICE |
| 470297 | \$380.70 | TROPHY CLUB PID NO 1 EMERGENCY SERVICE |
| 470298 | \$411.86 | TROPHY CLUB PID NO 1 EMERGENCY SERVICE |
| 470299 | \$359.81 | TROPHY CLUB PID NO 1 EMERGENCY SERVICE |
| 470300 | \$425.51 | TROPHY CLUB PID NO 1 EMERGENCY SERVICE |
| 470397 | \$68.79  | TROPHY CLUB PID NO 1 EMERGENCY SERVICE |
| 471214 | \$23.35  | TROPHY CLUB PID NO 1 EMERGENCY SERVICE |
| 471291 | \$9.84   | TROPHY CLUB PID NO 1 EMERGENCY SERVICE |
| 494650 | \$2.86   | TROPHY CLUB PID NO 1 EMERGENCY SERVICE |
| 498867 | \$501.72 | TROPHY CLUB PID NO 1 EMERGENCY SERVICE |
| 498868 | \$407.65 | TROPHY CLUB PID NO 1 EMERGENCY SERVICE |
| 498869 | \$455.11 | TROPHY CLUB PID NO 1 EMERGENCY SERVICE |
| 498870 | \$378.53 | TROPHY CLUB PID NO 1 EMERGENCY SERVICE |
| 498871 | \$445.07 | TROPHY CLUB PID NO 1 EMERGENCY SERVICE |
| 498873 | \$383.68 | TROPHY CLUB PID NO 1 EMERGENCY SERVICE |
| 498874 | \$35.78  | TROPHY CLUB PID NO 1 EMERGENCY SERVICE |
| 498875 | \$466.08 | TROPHY CLUB PID NO 1 EMERGENCY SERVICE |

|        |          |                                        |
|--------|----------|----------------------------------------|
| 498876 | \$399.45 | TROPHY CLUB PID NO 1 EMERGENCY SERVICE |
| 498877 | \$423.82 | TROPHY CLUB PID NO 1 EMERGENCY SERVICE |
| 498878 | \$479.75 | TROPHY CLUB PID NO 1 EMERGENCY SERVICE |
| 498879 | \$417.77 | TROPHY CLUB PID NO 1 EMERGENCY SERVICE |
| 498911 | \$450.10 | TROPHY CLUB PID NO 1 EMERGENCY SERVICE |
| 498912 | \$396.88 | TROPHY CLUB PID NO 1 EMERGENCY SERVICE |
| 498913 | \$363.61 | TROPHY CLUB PID NO 1 EMERGENCY SERVICE |
| 498914 | \$495.24 | TROPHY CLUB PID NO 1 EMERGENCY SERVICE |
| 498915 | \$520.03 | TROPHY CLUB PID NO 1 EMERGENCY SERVICE |
| 498916 | \$480.02 | TROPHY CLUB PID NO 1 EMERGENCY SERVICE |
| 498917 | \$456.16 | TROPHY CLUB PID NO 1 EMERGENCY SERVICE |
| 498918 | \$397.62 | TROPHY CLUB PID NO 1 EMERGENCY SERVICE |
| 498919 | \$255.05 | TROPHY CLUB PID NO 1 EMERGENCY SERVICE |
| 498920 | \$491.20 | TROPHY CLUB PID NO 1 EMERGENCY SERVICE |
| 498922 | \$483.11 | TROPHY CLUB PID NO 1 EMERGENCY SERVICE |
| 498923 | \$485.14 | TROPHY CLUB PID NO 1 EMERGENCY SERVICE |
| 498924 | \$488.52 | TROPHY CLUB PID NO 1 EMERGENCY SERVICE |
| 498925 | \$411.69 | TROPHY CLUB PID NO 1 EMERGENCY SERVICE |
| 498926 | \$438.64 | TROPHY CLUB PID NO 1 EMERGENCY SERVICE |
| 498927 | \$462.23 | TROPHY CLUB PID NO 1 EMERGENCY SERVICE |
| 498928 | \$462.90 | TROPHY CLUB PID NO 1 EMERGENCY SERVICE |
| 498929 | \$449.28 | TROPHY CLUB PID NO 1 EMERGENCY SERVICE |
| 498930 | \$444.06 | TROPHY CLUB PID NO 1 EMERGENCY SERVICE |
| 498931 | \$458.18 | TROPHY CLUB PID NO 1 EMERGENCY SERVICE |
| 498932 | \$460.88 | TROPHY CLUB PID NO 1 EMERGENCY SERVICE |
| 498933 | \$507.55 | TROPHY CLUB PID NO 1 EMERGENCY SERVICE |
| 498934 | \$452.12 | TROPHY CLUB PID NO 1 EMERGENCY SERVICE |
| 498935 | \$391.55 | TROPHY CLUB PID NO 1 EMERGENCY SERVICE |
| 498936 | \$422.90 | TROPHY CLUB PID NO 1 EMERGENCY SERVICE |
| 498937 | \$362.01 | TROPHY CLUB PID NO 1 EMERGENCY SERVICE |
| 498938 | \$522.20 | TROPHY CLUB PID NO 1 EMERGENCY SERVICE |
| 498939 | \$398.67 | TROPHY CLUB PID NO 1 EMERGENCY SERVICE |
| 498940 | \$470.65 | TROPHY CLUB PID NO 1 EMERGENCY SERVICE |
| 498945 | \$426.52 | TROPHY CLUB PID NO 1 EMERGENCY SERVICE |
| 498946 | \$481.99 | TROPHY CLUB PID NO 1 EMERGENCY SERVICE |
| 498947 | \$453.01 | TROPHY CLUB PID NO 1 EMERGENCY SERVICE |
| 498948 | \$435.95 | TROPHY CLUB PID NO 1 EMERGENCY SERVICE |
| 498949 | \$413.61 | TROPHY CLUB PID NO 1 EMERGENCY SERVICE |
| 498950 | \$412.01 | TROPHY CLUB PID NO 1 EMERGENCY SERVICE |
| 498951 | \$412.72 | TROPHY CLUB PID NO 1 EMERGENCY SERVICE |
| 498952 | \$390.22 | TROPHY CLUB PID NO 1 EMERGENCY SERVICE |
| 498953 | \$426.52 | TROPHY CLUB PID NO 1 EMERGENCY SERVICE |
| 498954 | \$335.31 | TROPHY CLUB PID NO 1 EMERGENCY SERVICE |
| 498955 | \$420.53 | TROPHY CLUB PID NO 1 EMERGENCY SERVICE |
| 498956 | \$488.81 | TROPHY CLUB PID NO 1 EMERGENCY SERVICE |
| 533255 | \$411.02 | TROPHY CLUB PID NO 1 EMERGENCY SERVICE |
| 533256 | \$426.52 | TROPHY CLUB PID NO 1 EMERGENCY SERVICE |
| 533257 | \$516.04 | TROPHY CLUB PID NO 1 EMERGENCY SERVICE |
| 533258 | \$516.34 | TROPHY CLUB PID NO 1 EMERGENCY SERVICE |
| 533259 | \$486.18 | TROPHY CLUB PID NO 1 EMERGENCY SERVICE |
| 533262 | \$422.81 | TROPHY CLUB PID NO 1 EMERGENCY SERVICE |
| 533264 | \$217.03 | TROPHY CLUB PID NO 1 EMERGENCY SERVICE |
| 533287 | \$411.44 | TROPHY CLUB PID NO 1 EMERGENCY SERVICE |
| 533289 | \$376.32 | TROPHY CLUB PID NO 1 EMERGENCY SERVICE |
| 533290 | \$319.35 | TROPHY CLUB PID NO 1 EMERGENCY SERVICE |
| 533291 | \$350.58 | TROPHY CLUB PID NO 1 EMERGENCY SERVICE |

|        |          |                                        |
|--------|----------|----------------------------------------|
| 533292 | \$430.96 | TROPHY CLUB PID NO 1 EMERGENCY SERVICE |
| 533293 | \$414.66 | TROPHY CLUB PID NO 1 EMERGENCY SERVICE |
| 533294 | \$460.64 | TROPHY CLUB PID NO 1 EMERGENCY SERVICE |
| 533295 | \$419.10 | TROPHY CLUB PID NO 1 EMERGENCY SERVICE |
| 533296 | \$465.60 | TROPHY CLUB PID NO 1 EMERGENCY SERVICE |
| 533297 | \$452.10 | TROPHY CLUB PID NO 1 EMERGENCY SERVICE |
| 533298 | \$511.35 | TROPHY CLUB PID NO 1 EMERGENCY SERVICE |
| 533307 | \$397.54 | TROPHY CLUB PID NO 1 EMERGENCY SERVICE |
| 533309 | \$416.41 | TROPHY CLUB PID NO 1 EMERGENCY SERVICE |
| 533310 | \$380.22 | TROPHY CLUB PID NO 1 EMERGENCY SERVICE |
| 533311 | \$454.95 | TROPHY CLUB PID NO 1 EMERGENCY SERVICE |
| 533312 | \$406.63 | TROPHY CLUB PID NO 1 EMERGENCY SERVICE |
| 533313 | \$455.84 | TROPHY CLUB PID NO 1 EMERGENCY SERVICE |
| 533314 | \$368.75 | TROPHY CLUB PID NO 1 EMERGENCY SERVICE |
| 533315 | \$521.73 | TROPHY CLUB PID NO 1 EMERGENCY SERVICE |
| 533316 | \$474.01 | TROPHY CLUB PID NO 1 EMERGENCY SERVICE |
| 533317 | \$529.89 | TROPHY CLUB PID NO 1 EMERGENCY SERVICE |
| 533318 | \$199.51 | TROPHY CLUB PID NO 1 EMERGENCY SERVICE |
| 533319 | \$455.91 | TROPHY CLUB PID NO 1 EMERGENCY SERVICE |
| 533320 | \$524.80 | TROPHY CLUB PID NO 1 EMERGENCY SERVICE |
| 533321 | \$217.62 | TROPHY CLUB PID NO 1 EMERGENCY SERVICE |
| 533322 | \$427.86 | TROPHY CLUB PID NO 1 EMERGENCY SERVICE |
| 533323 | \$529.37 | TROPHY CLUB PID NO 1 EMERGENCY SERVICE |
| 533324 | \$528.95 | TROPHY CLUB PID NO 1 EMERGENCY SERVICE |
| 533326 | \$451.45 | TROPHY CLUB PID NO 1 EMERGENCY SERVICE |
| 533327 | \$452.79 | TROPHY CLUB PID NO 1 EMERGENCY SERVICE |
| 533328 | \$340.27 | TROPHY CLUB PID NO 1 EMERGENCY SERVICE |
| 533329 | \$224.55 | TROPHY CLUB PID NO 1 EMERGENCY SERVICE |
| 533330 | \$268.80 | TROPHY CLUB PID NO 1 EMERGENCY SERVICE |
| 533331 | \$508.72 | TROPHY CLUB PID NO 1 EMERGENCY SERVICE |
| 533332 | \$518.83 | TROPHY CLUB PID NO 1 EMERGENCY SERVICE |
| 533333 | \$528.15 | TROPHY CLUB PID NO 1 EMERGENCY SERVICE |
| 533334 | \$454.92 | TROPHY CLUB PID NO 1 EMERGENCY SERVICE |
| 533335 | \$233.80 | TROPHY CLUB PID NO 1 EMERGENCY SERVICE |
| 533336 | \$439.32 | TROPHY CLUB PID NO 1 EMERGENCY SERVICE |
| 533337 | \$432.89 | TROPHY CLUB PID NO 1 EMERGENCY SERVICE |
| 533338 | \$489.27 | TROPHY CLUB PID NO 1 EMERGENCY SERVICE |
| 533339 | \$478.40 | TROPHY CLUB PID NO 1 EMERGENCY SERVICE |
| 533340 | \$266.34 | TROPHY CLUB PID NO 1 EMERGENCY SERVICE |
| 533341 | \$438.64 | TROPHY CLUB PID NO 1 EMERGENCY SERVICE |
| 533342 | \$366.11 | TROPHY CLUB PID NO 1 EMERGENCY SERVICE |
| 533343 | \$493.91 | TROPHY CLUB PID NO 1 EMERGENCY SERVICE |
| 533344 | \$531.32 | TROPHY CLUB PID NO 1 EMERGENCY SERVICE |
| 533345 | \$520.20 | TROPHY CLUB PID NO 1 EMERGENCY SERVICE |
| 533346 | \$400.46 | TROPHY CLUB PID NO 1 EMERGENCY SERVICE |
| 533347 | \$535.20 | TROPHY CLUB PID NO 1 EMERGENCY SERVICE |
| 533348 | \$516.10 | TROPHY CLUB PID NO 1 EMERGENCY SERVICE |
| 533349 | \$252.52 | TROPHY CLUB PID NO 1 EMERGENCY SERVICE |
| 533350 | \$388.11 | TROPHY CLUB PID NO 1 EMERGENCY SERVICE |
| 533351 | \$515.46 | TROPHY CLUB PID NO 1 EMERGENCY SERVICE |
| 533352 | \$481.98 | TROPHY CLUB PID NO 1 EMERGENCY SERVICE |
| 533353 | \$356.31 | TROPHY CLUB PID NO 1 EMERGENCY SERVICE |
| 533354 | \$405.90 | TROPHY CLUB PID NO 1 EMERGENCY SERVICE |
| 533355 | \$211.67 | TROPHY CLUB PID NO 1 EMERGENCY SERVICE |
| 533356 | \$385.25 | TROPHY CLUB PID NO 1 EMERGENCY SERVICE |
| 533357 | \$319.35 | TROPHY CLUB PID NO 1 EMERGENCY SERVICE |

|        |          |                                        |
|--------|----------|----------------------------------------|
| 533358 | \$455.98 | TROPHY CLUB PID NO 1 EMERGENCY SERVICE |
| 533359 | \$413.12 | TROPHY CLUB PID NO 1 EMERGENCY SERVICE |
| 533360 | \$384.07 | TROPHY CLUB PID NO 1 EMERGENCY SERVICE |
| 533361 | \$403.83 | TROPHY CLUB PID NO 1 EMERGENCY SERVICE |
| 533362 | \$469.01 | TROPHY CLUB PID NO 1 EMERGENCY SERVICE |
| 533363 | \$394.17 | TROPHY CLUB PID NO 1 EMERGENCY SERVICE |
| 533364 | \$357.18 | TROPHY CLUB PID NO 1 EMERGENCY SERVICE |
| 533365 | \$445.72 | TROPHY CLUB PID NO 1 EMERGENCY SERVICE |
| 533366 | \$389.46 | TROPHY CLUB PID NO 1 EMERGENCY SERVICE |
| 533367 | \$423.33 | TROPHY CLUB PID NO 1 EMERGENCY SERVICE |
| 533368 | \$402.43 | TROPHY CLUB PID NO 1 EMERGENCY SERVICE |
| 533369 | \$388.98 | TROPHY CLUB PID NO 1 EMERGENCY SERVICE |
| 533370 | \$315.41 | TROPHY CLUB PID NO 1 EMERGENCY SERVICE |
| 533371 | \$352.40 | TROPHY CLUB PID NO 1 EMERGENCY SERVICE |
| 533372 | \$421.14 | TROPHY CLUB PID NO 1 EMERGENCY SERVICE |
| 533373 | \$341.00 | TROPHY CLUB PID NO 1 EMERGENCY SERVICE |
| 533374 | \$345.71 | TROPHY CLUB PID NO 1 EMERGENCY SERVICE |
| 533375 | \$400.91 | TROPHY CLUB PID NO 1 EMERGENCY SERVICE |
| 533376 | \$412.08 | TROPHY CLUB PID NO 1 EMERGENCY SERVICE |
| 533377 | \$426.96 | TROPHY CLUB PID NO 1 EMERGENCY SERVICE |
| 533378 | \$466.02 | TROPHY CLUB PID NO 1 EMERGENCY SERVICE |
| 533379 | \$429.87 | TROPHY CLUB PID NO 1 EMERGENCY SERVICE |
| 533380 | \$369.81 | TROPHY CLUB PID NO 1 EMERGENCY SERVICE |
| 533381 | \$424.49 | TROPHY CLUB PID NO 1 EMERGENCY SERVICE |
| 533382 | \$502.94 | TROPHY CLUB PID NO 1 EMERGENCY SERVICE |
| 533383 | \$358.02 | TROPHY CLUB PID NO 1 EMERGENCY SERVICE |
| 533384 | \$320.06 | TROPHY CLUB PID NO 1 EMERGENCY SERVICE |
| 533385 | \$186.49 | TROPHY CLUB PID NO 1 EMERGENCY SERVICE |
| 533386 | \$342.70 | TROPHY CLUB PID NO 1 EMERGENCY SERVICE |
| 533387 | \$405.96 | TROPHY CLUB PID NO 1 EMERGENCY SERVICE |
| 533388 | \$400.24 | TROPHY CLUB PID NO 1 EMERGENCY SERVICE |
| 533389 | \$370.90 | TROPHY CLUB PID NO 1 EMERGENCY SERVICE |
| 533390 | \$410.81 | TROPHY CLUB PID NO 1 EMERGENCY SERVICE |
| 533391 | \$435.83 | TROPHY CLUB PID NO 1 EMERGENCY SERVICE |
| 533392 | \$351.56 | TROPHY CLUB PID NO 1 EMERGENCY SERVICE |
| 533393 | \$390.80 | TROPHY CLUB PID NO 1 EMERGENCY SERVICE |
| 533394 | \$451.55 | TROPHY CLUB PID NO 1 EMERGENCY SERVICE |
| 533395 | \$480.48 | TROPHY CLUB PID NO 1 EMERGENCY SERVICE |
| 533396 | \$407.65 | TROPHY CLUB PID NO 1 EMERGENCY SERVICE |
| 533397 | \$374.52 | TROPHY CLUB PID NO 1 EMERGENCY SERVICE |
| 533398 | \$366.26 | TROPHY CLUB PID NO 1 EMERGENCY SERVICE |
| 533399 | \$424.49 | TROPHY CLUB PID NO 1 EMERGENCY SERVICE |
| 533400 | \$468.68 | TROPHY CLUB PID NO 1 EMERGENCY SERVICE |
| 533401 | \$356.16 | TROPHY CLUB PID NO 1 EMERGENCY SERVICE |
| 533402 | \$459.13 | TROPHY CLUB PID NO 1 EMERGENCY SERVICE |
| 533403 | \$384.34 | TROPHY CLUB PID NO 1 EMERGENCY SERVICE |
| 533404 | \$485.81 | TROPHY CLUB PID NO 1 EMERGENCY SERVICE |
| 533405 | \$424.49 | TROPHY CLUB PID NO 1 EMERGENCY SERVICE |
| 533406 | \$497.64 | TROPHY CLUB PID NO 1 EMERGENCY SERVICE |
| 533407 | \$435.27 | TROPHY CLUB PID NO 1 EMERGENCY SERVICE |
| 533408 | \$441.34 | TROPHY CLUB PID NO 1 EMERGENCY SERVICE |
| 533409 | \$382.39 | TROPHY CLUB PID NO 1 EMERGENCY SERVICE |
| 533410 | \$155.93 | TROPHY CLUB PID NO 1 EMERGENCY SERVICE |
| 533411 | \$483.24 | TROPHY CLUB PID NO 1 EMERGENCY SERVICE |
| 533412 | \$408.00 | TROPHY CLUB PID NO 1 EMERGENCY SERVICE |
| 533413 | \$475.03 | TROPHY CLUB PID NO 1 EMERGENCY SERVICE |

|        |          |                                        |
|--------|----------|----------------------------------------|
| 533414 | \$462.90 | TROPHY CLUB PID NO 1 EMERGENCY SERVICE |
| 533415 | \$364.72 | TROPHY CLUB PID NO 1 EMERGENCY SERVICE |
| 533416 | \$385.37 | TROPHY CLUB PID NO 1 EMERGENCY SERVICE |
| 533417 | \$333.84 | TROPHY CLUB PID NO 1 EMERGENCY SERVICE |
| 533418 | \$295.80 | TROPHY CLUB PID NO 1 EMERGENCY SERVICE |
| 533419 | \$443.87 | TROPHY CLUB PID NO 1 EMERGENCY SERVICE |
| 533420 | \$406.90 | TROPHY CLUB PID NO 1 EMERGENCY SERVICE |
| 533421 | \$180.36 | TROPHY CLUB PID NO 1 EMERGENCY SERVICE |
| 533422 | \$208.52 | TROPHY CLUB PID NO 1 EMERGENCY SERVICE |
| 534852 | \$421.13 | TROPHY CLUB PID NO 1 EMERGENCY SERVICE |
| 534853 | \$411.02 | TROPHY CLUB PID NO 1 EMERGENCY SERVICE |
| 534854 | \$365.52 | TROPHY CLUB PID NO 1 EMERGENCY SERVICE |
| 534855 | \$428.54 | TROPHY CLUB PID NO 1 EMERGENCY SERVICE |
| 534856 | \$349.70 | TROPHY CLUB PID NO 1 EMERGENCY SERVICE |
| 534857 | \$343.64 | TROPHY CLUB PID NO 1 EMERGENCY SERVICE |
| 534860 | \$393.44 | TROPHY CLUB PID NO 1 EMERGENCY SERVICE |
| 534861 | \$405.70 | TROPHY CLUB PID NO 1 EMERGENCY SERVICE |
| 534862 | \$420.56 | TROPHY CLUB PID NO 1 EMERGENCY SERVICE |
| 534863 | \$404.28 | TROPHY CLUB PID NO 1 EMERGENCY SERVICE |
| 534864 | \$390.80 | TROPHY CLUB PID NO 1 EMERGENCY SERVICE |
| 534865 | \$404.28 | TROPHY CLUB PID NO 1 EMERGENCY SERVICE |
| 534866 | \$452.55 | TROPHY CLUB PID NO 1 EMERGENCY SERVICE |
| 534867 | \$416.41 | TROPHY CLUB PID NO 1 EMERGENCY SERVICE |
| 534868 | \$446.73 | TROPHY CLUB PID NO 1 EMERGENCY SERVICE |
| 534869 | \$378.68 | TROPHY CLUB PID NO 1 EMERGENCY SERVICE |
| 534870 | \$500.04 | TROPHY CLUB PID NO 1 EMERGENCY SERVICE |
| 534871 | \$441.34 | TROPHY CLUB PID NO 1 EMERGENCY SERVICE |
| 534872 | \$409.67 | TROPHY CLUB PID NO 1 EMERGENCY SERVICE |
| 534873 | \$429.21 | TROPHY CLUB PID NO 1 EMERGENCY SERVICE |
| 534874 | \$359.47 | TROPHY CLUB PID NO 1 EMERGENCY SERVICE |
| 534875 | \$461.00 | TROPHY CLUB PID NO 1 EMERGENCY SERVICE |
| 534876 | \$400.56 | TROPHY CLUB PID NO 1 EMERGENCY SERVICE |
| 534877 | \$107.43 | TROPHY CLUB PID NO 1 EMERGENCY SERVICE |
| 534878 | \$437.10 | TROPHY CLUB PID NO 1 EMERGENCY SERVICE |
| 534879 | \$385.57 | TROPHY CLUB PID NO 1 EMERGENCY SERVICE |
| 534880 | \$440.67 | TROPHY CLUB PID NO 1 EMERGENCY SERVICE |
| 534881 | \$319.31 | TROPHY CLUB PID NO 1 EMERGENCY SERVICE |
| 534882 | \$394.85 | TROPHY CLUB PID NO 1 EMERGENCY SERVICE |
| 534883 | \$453.11 | TROPHY CLUB PID NO 1 EMERGENCY SERVICE |
| 534884 | \$434.60 | TROPHY CLUB PID NO 1 EMERGENCY SERVICE |
| 534885 | \$401.35 | TROPHY CLUB PID NO 1 EMERGENCY SERVICE |
| 534886 | \$342.68 | TROPHY CLUB PID NO 1 EMERGENCY SERVICE |
| 534887 | \$449.64 | TROPHY CLUB PID NO 1 EMERGENCY SERVICE |
| 534888 | \$377.61 | TROPHY CLUB PID NO 1 EMERGENCY SERVICE |
| 534889 | \$285.43 | TROPHY CLUB PID NO 1 EMERGENCY SERVICE |
| 534890 | \$383.67 | TROPHY CLUB PID NO 1 EMERGENCY SERVICE |
| 534891 | \$467.92 | TROPHY CLUB PID NO 1 EMERGENCY SERVICE |
| 534892 | \$470.25 | TROPHY CLUB PID NO 1 EMERGENCY SERVICE |
| 534893 | \$220.37 | TROPHY CLUB PID NO 1 EMERGENCY SERVICE |
| 534894 | \$402.34 | TROPHY CLUB PID NO 1 EMERGENCY SERVICE |
| 534895 | \$431.23 | TROPHY CLUB PID NO 1 EMERGENCY SERVICE |
| 534896 | \$417.46 | TROPHY CLUB PID NO 1 EMERGENCY SERVICE |
| 534897 | \$424.49 | TROPHY CLUB PID NO 1 EMERGENCY SERVICE |
| 534898 | \$462.35 | TROPHY CLUB PID NO 1 EMERGENCY SERVICE |
| 536564 | \$410.13 | TROPHY CLUB PID NO 1 EMERGENCY SERVICE |
| 536565 | \$437.97 | TROPHY CLUB PID NO 1 EMERGENCY SERVICE |

|        |          |                                        |
|--------|----------|----------------------------------------|
| 536567 | \$398.49 | TROPHY CLUB PID NO 1 EMERGENCY SERVICE |
| 536568 | \$411.02 | TROPHY CLUB PID NO 1 EMERGENCY SERVICE |
| 536569 | \$393.08 | TROPHY CLUB PID NO 1 EMERGENCY SERVICE |
| 536570 | \$444.39 | TROPHY CLUB PID NO 1 EMERGENCY SERVICE |
| 536571 | \$449.32 | TROPHY CLUB PID NO 1 EMERGENCY SERVICE |
| 536572 | \$461.55 | TROPHY CLUB PID NO 1 EMERGENCY SERVICE |
| 536575 | \$439.92 | TROPHY CLUB PID NO 1 EMERGENCY SERVICE |
| 536576 | \$429.88 | TROPHY CLUB PID NO 1 EMERGENCY SERVICE |
| 536577 | \$373.29 | TROPHY CLUB PID NO 1 EMERGENCY SERVICE |
| 536578 | \$382.79 | TROPHY CLUB PID NO 1 EMERGENCY SERVICE |
| 536579 | \$377.33 | TROPHY CLUB PID NO 1 EMERGENCY SERVICE |
| 536580 | \$335.55 | TROPHY CLUB PID NO 1 EMERGENCY SERVICE |
| 536581 | \$365.87 | TROPHY CLUB PID NO 1 EMERGENCY SERVICE |
| 536582 | \$367.22 | TROPHY CLUB PID NO 1 EMERGENCY SERVICE |
| 536583 | \$385.84 | TROPHY CLUB PID NO 1 EMERGENCY SERVICE |
| 536584 | \$345.02 | TROPHY CLUB PID NO 1 EMERGENCY SERVICE |
| 536585 | \$355.77 | TROPHY CLUB PID NO 1 EMERGENCY SERVICE |
| 536586 | \$412.92 | TROPHY CLUB PID NO 1 EMERGENCY SERVICE |
| 536587 | \$407.65 | TROPHY CLUB PID NO 1 EMERGENCY SERVICE |
| 536868 | \$13.54  | TROPHY CLUB PID NO 1 EMERGENCY SERVICE |
| 537217 | \$24.55  | TROPHY CLUB PID NO 1 EMERGENCY SERVICE |
| 537349 | \$47.60  | TROPHY CLUB PID NO 1 EMERGENCY SERVICE |
| 557641 | \$281.65 | TROPHY CLUB PID NO 1 EMERGENCY SERVICE |
| 557642 | \$326.26 | TROPHY CLUB PID NO 1 EMERGENCY SERVICE |
| 557643 | \$294.77 | TROPHY CLUB PID NO 1 EMERGENCY SERVICE |
| 557644 | \$255.19 | TROPHY CLUB PID NO 1 EMERGENCY SERVICE |
| 557645 | \$263.00 | TROPHY CLUB PID NO 1 EMERGENCY SERVICE |
| 557646 | \$301.72 | TROPHY CLUB PID NO 1 EMERGENCY SERVICE |
| 557647 | \$256.11 | TROPHY CLUB PID NO 1 EMERGENCY SERVICE |
| 557648 | \$279.63 | TROPHY CLUB PID NO 1 EMERGENCY SERVICE |
| 557649 | \$256.11 | TROPHY CLUB PID NO 1 EMERGENCY SERVICE |
| 557650 | \$263.45 | TROPHY CLUB PID NO 1 EMERGENCY SERVICE |
| 557651 | \$294.64 | TROPHY CLUB PID NO 1 EMERGENCY SERVICE |
| 557652 | \$252.68 | TROPHY CLUB PID NO 1 EMERGENCY SERVICE |
| 557653 | \$326.75 | TROPHY CLUB PID NO 1 EMERGENCY SERVICE |
| 557654 | \$259.41 | TROPHY CLUB PID NO 1 EMERGENCY SERVICE |
| 557655 | \$298.70 | TROPHY CLUB PID NO 1 EMERGENCY SERVICE |
| 557656 | \$292.59 | TROPHY CLUB PID NO 1 EMERGENCY SERVICE |
| 557657 | \$307.02 | TROPHY CLUB PID NO 1 EMERGENCY SERVICE |
| 557658 | \$295.34 | TROPHY CLUB PID NO 1 EMERGENCY SERVICE |
| 557659 | \$261.17 | TROPHY CLUB PID NO 1 EMERGENCY SERVICE |
| 557660 | \$297.78 | TROPHY CLUB PID NO 1 EMERGENCY SERVICE |
| 557661 | \$260.68 | TROPHY CLUB PID NO 1 EMERGENCY SERVICE |
| 557662 | \$326.49 | TROPHY CLUB PID NO 1 EMERGENCY SERVICE |
| 557663 | \$271.54 | TROPHY CLUB PID NO 1 EMERGENCY SERVICE |
| 557665 | \$311.43 | TROPHY CLUB PID NO 1 EMERGENCY SERVICE |
| 557666 | \$343.27 | TROPHY CLUB PID NO 1 EMERGENCY SERVICE |
| 557667 | \$295.12 | TROPHY CLUB PID NO 1 EMERGENCY SERVICE |
| 557668 | \$264.46 | TROPHY CLUB PID NO 1 EMERGENCY SERVICE |
| 557669 | \$260.76 | TROPHY CLUB PID NO 1 EMERGENCY SERVICE |
| 557670 | \$325.48 | TROPHY CLUB PID NO 1 EMERGENCY SERVICE |
| 557671 | \$293.54 | TROPHY CLUB PID NO 1 EMERGENCY SERVICE |
| 557672 | \$262.26 | TROPHY CLUB PID NO 1 EMERGENCY SERVICE |
| 557673 | \$308.34 | TROPHY CLUB PID NO 1 EMERGENCY SERVICE |
| 557674 | \$267.50 | TROPHY CLUB PID NO 1 EMERGENCY SERVICE |
| 557675 | \$295.12 | TROPHY CLUB PID NO 1 EMERGENCY SERVICE |

|        |          |                                        |
|--------|----------|----------------------------------------|
| 557676 | \$314.66 | TROPHY CLUB PID NO 1 EMERGENCY SERVICE |
| 557677 | \$283.00 | TROPHY CLUB PID NO 1 EMERGENCY SERVICE |
| 557678 | \$263.45 | TROPHY CLUB PID NO 1 EMERGENCY SERVICE |
| 557679 | \$261.92 | TROPHY CLUB PID NO 1 EMERGENCY SERVICE |
| 557680 | \$309.76 | TROPHY CLUB PID NO 1 EMERGENCY SERVICE |
| 557681 | \$330.09 | TROPHY CLUB PID NO 1 EMERGENCY SERVICE |
| 557682 | \$277.55 | TROPHY CLUB PID NO 1 EMERGENCY SERVICE |
| 557683 | \$286.38 | TROPHY CLUB PID NO 1 EMERGENCY SERVICE |
| 557684 | \$297.67 | TROPHY CLUB PID NO 1 EMERGENCY SERVICE |
| 557685 | \$263.38 | TROPHY CLUB PID NO 1 EMERGENCY SERVICE |
| 557686 | \$252.00 | TROPHY CLUB PID NO 1 EMERGENCY SERVICE |
| 558332 | \$361.16 | TROPHY CLUB PID NO 1 EMERGENCY SERVICE |
| 558333 | \$369.27 | TROPHY CLUB PID NO 1 EMERGENCY SERVICE |
| 558334 | \$404.20 | TROPHY CLUB PID NO 1 EMERGENCY SERVICE |
| 558335 | \$401.92 | TROPHY CLUB PID NO 1 EMERGENCY SERVICE |
| 558336 | \$414.42 | TROPHY CLUB PID NO 1 EMERGENCY SERVICE |
| 558337 | \$340.19 | TROPHY CLUB PID NO 1 EMERGENCY SERVICE |
| 558338 | \$364.49 | TROPHY CLUB PID NO 1 EMERGENCY SERVICE |
| 558339 | \$358.46 | TROPHY CLUB PID NO 1 EMERGENCY SERVICE |
| 558340 | \$211.07 | TROPHY CLUB PID NO 1 EMERGENCY SERVICE |
| 558341 | \$312.12 | TROPHY CLUB PID NO 1 EMERGENCY SERVICE |
| 558342 | \$387.44 | TROPHY CLUB PID NO 1 EMERGENCY SERVICE |
| 558343 | \$353.32 | TROPHY CLUB PID NO 1 EMERGENCY SERVICE |
| 558344 | \$352.28 | TROPHY CLUB PID NO 1 EMERGENCY SERVICE |
| 558345 | \$308.60 | TROPHY CLUB PID NO 1 EMERGENCY SERVICE |
| 558346 | \$315.81 | TROPHY CLUB PID NO 1 EMERGENCY SERVICE |
| 558347 | \$419.79 | TROPHY CLUB PID NO 1 EMERGENCY SERVICE |
| 558348 | \$384.92 | TROPHY CLUB PID NO 1 EMERGENCY SERVICE |
| 558349 | \$398.22 | TROPHY CLUB PID NO 1 EMERGENCY SERVICE |
| 558350 | \$370.59 | TROPHY CLUB PID NO 1 EMERGENCY SERVICE |
| 558351 | \$381.67 | TROPHY CLUB PID NO 1 EMERGENCY SERVICE |
| 558352 | \$398.22 | TROPHY CLUB PID NO 1 EMERGENCY SERVICE |
| 558353 | \$330.16 | TROPHY CLUB PID NO 1 EMERGENCY SERVICE |
| 558354 | \$355.09 | TROPHY CLUB PID NO 1 EMERGENCY SERVICE |
| 558355 | \$399.99 | TROPHY CLUB PID NO 1 EMERGENCY SERVICE |
| 558356 | \$342.29 | TROPHY CLUB PID NO 1 EMERGENCY SERVICE |
| 558357 | \$386.45 | TROPHY CLUB PID NO 1 EMERGENCY SERVICE |
| 558358 | \$358.02 | TROPHY CLUB PID NO 1 EMERGENCY SERVICE |
| 558359 | \$366.00 | TROPHY CLUB PID NO 1 EMERGENCY SERVICE |
| 558360 | \$385.25 | TROPHY CLUB PID NO 1 EMERGENCY SERVICE |
| 558361 | \$357.11 | TROPHY CLUB PID NO 1 EMERGENCY SERVICE |
| 558363 | \$382.88 | TROPHY CLUB PID NO 1 EMERGENCY SERVICE |
| 558364 | \$347.06 | TROPHY CLUB PID NO 1 EMERGENCY SERVICE |
| 558365 | \$348.52 | TROPHY CLUB PID NO 1 EMERGENCY SERVICE |
| 558366 | \$372.25 | TROPHY CLUB PID NO 1 EMERGENCY SERVICE |
| 558367 | \$381.37 | TROPHY CLUB PID NO 1 EMERGENCY SERVICE |
| 558368 | \$278.32 | TROPHY CLUB PID NO 1 EMERGENCY SERVICE |
| 558369 | \$378.42 | TROPHY CLUB PID NO 1 EMERGENCY SERVICE |
| 558370 | \$333.52 | TROPHY CLUB PID NO 1 EMERGENCY SERVICE |
| 558371 | \$341.25 | TROPHY CLUB PID NO 1 EMERGENCY SERVICE |
| 558372 | \$278.32 | TROPHY CLUB PID NO 1 EMERGENCY SERVICE |
| 558373 | \$409.03 | TROPHY CLUB PID NO 1 EMERGENCY SERVICE |
| 558374 | \$260.15 | TROPHY CLUB PID NO 1 EMERGENCY SERVICE |
| 558375 | \$407.65 | TROPHY CLUB PID NO 1 EMERGENCY SERVICE |
| 558376 | \$389.17 | TROPHY CLUB PID NO 1 EMERGENCY SERVICE |
| 558377 | \$409.22 | TROPHY CLUB PID NO 1 EMERGENCY SERVICE |



|        |          |                                        |
|--------|----------|----------------------------------------|
| 558378 | \$385.36 | TROPHY CLUB PID NO 1 EMERGENCY SERVICE |
| 558379 | \$319.19 | TROPHY CLUB PID NO 1 EMERGENCY SERVICE |
| 558380 | \$368.57 | TROPHY CLUB PID NO 1 EMERGENCY SERVICE |
| 558381 | \$299.84 | TROPHY CLUB PID NO 1 EMERGENCY SERVICE |
| 558382 | \$397.54 | TROPHY CLUB PID NO 1 EMERGENCY SERVICE |
| 558383 | \$313.07 | TROPHY CLUB PID NO 1 EMERGENCY SERVICE |
| 558384 | \$372.61 | TROPHY CLUB PID NO 1 EMERGENCY SERVICE |
| 558385 | \$421.25 | TROPHY CLUB PID NO 1 EMERGENCY SERVICE |
| 558386 | \$402.22 | TROPHY CLUB PID NO 1 EMERGENCY SERVICE |
| 558387 | \$403.61 | TROPHY CLUB PID NO 1 EMERGENCY SERVICE |
| 558388 | \$373.96 | TROPHY CLUB PID NO 1 EMERGENCY SERVICE |
| 558389 | \$342.29 | TROPHY CLUB PID NO 1 EMERGENCY SERVICE |
| 558390 | \$384.82 | TROPHY CLUB PID NO 1 EMERGENCY SERVICE |
| 558391 | \$406.30 | TROPHY CLUB PID NO 1 EMERGENCY SERVICE |
| 558392 | \$343.64 | TROPHY CLUB PID NO 1 EMERGENCY SERVICE |
| 558393 | \$387.44 | TROPHY CLUB PID NO 1 EMERGENCY SERVICE |
| 558394 | \$413.71 | TROPHY CLUB PID NO 1 EMERGENCY SERVICE |
| 558395 | \$367.74 | TROPHY CLUB PID NO 1 EMERGENCY SERVICE |
| 558396 | \$340.94 | TROPHY CLUB PID NO 1 EMERGENCY SERVICE |
| 558397 | \$302.65 | TROPHY CLUB PID NO 1 EMERGENCY SERVICE |
| 558398 | \$405.15 | TROPHY CLUB PID NO 1 EMERGENCY SERVICE |
| 558399 | \$316.80 | TROPHY CLUB PID NO 1 EMERGENCY SERVICE |
| 558400 | \$376.96 | TROPHY CLUB PID NO 1 EMERGENCY SERVICE |
| 558401 | \$348.35 | TROPHY CLUB PID NO 1 EMERGENCY SERVICE |
| 558402 | \$339.43 | TROPHY CLUB PID NO 1 EMERGENCY SERVICE |
| 558403 | \$394.07 | TROPHY CLUB PID NO 1 EMERGENCY SERVICE |
| 558405 | \$297.24 | TROPHY CLUB PID NO 1 EMERGENCY SERVICE |
| 558406 | \$301.16 | TROPHY CLUB PID NO 1 EMERGENCY SERVICE |
| 558407 | \$306.46 | TROPHY CLUB PID NO 1 EMERGENCY SERVICE |
| 558408 | \$354.06 | TROPHY CLUB PID NO 1 EMERGENCY SERVICE |
| 558409 | \$382.16 | TROPHY CLUB PID NO 1 EMERGENCY SERVICE |
| 558410 | \$380.77 | TROPHY CLUB PID NO 1 EMERGENCY SERVICE |
| 558411 | \$384.00 | TROPHY CLUB PID NO 1 EMERGENCY SERVICE |
| 558412 | \$373.96 | TROPHY CLUB PID NO 1 EMERGENCY SERVICE |
| 558413 | \$274.60 | TROPHY CLUB PID NO 1 EMERGENCY SERVICE |
| 558414 | \$331.51 | TROPHY CLUB PID NO 1 EMERGENCY SERVICE |
| 558415 | \$397.54 | TROPHY CLUB PID NO 1 EMERGENCY SERVICE |
| 558416 | \$299.16 | TROPHY CLUB PID NO 1 EMERGENCY SERVICE |
| 558417 | \$419.26 | TROPHY CLUB PID NO 1 EMERGENCY SERVICE |
| 558418 | \$408.41 | TROPHY CLUB PID NO 1 EMERGENCY SERVICE |
| 558419 | \$311.10 | TROPHY CLUB PID NO 1 EMERGENCY SERVICE |
| 558421 | \$382.72 | TROPHY CLUB PID NO 1 EMERGENCY SERVICE |
| 558422 | \$361.22 | TROPHY CLUB PID NO 1 EMERGENCY SERVICE |
| 558423 | \$395.48 | TROPHY CLUB PID NO 1 EMERGENCY SERVICE |
| 558424 | \$357.25 | TROPHY CLUB PID NO 1 EMERGENCY SERVICE |
| 558425 | \$356.00 | TROPHY CLUB PID NO 1 EMERGENCY SERVICE |
| 558426 | \$374.63 | TROPHY CLUB PID NO 1 EMERGENCY SERVICE |
| 558427 | \$392.83 | TROPHY CLUB PID NO 1 EMERGENCY SERVICE |
| 558428 | \$383.81 | TROPHY CLUB PID NO 1 EMERGENCY SERVICE |
| 558429 | \$303.14 | TROPHY CLUB PID NO 1 EMERGENCY SERVICE |
| 558430 | \$313.68 | TROPHY CLUB PID NO 1 EMERGENCY SERVICE |
| 558431 | \$319.14 | TROPHY CLUB PID NO 1 EMERGENCY SERVICE |
| 558432 | \$381.76 | TROPHY CLUB PID NO 1 EMERGENCY SERVICE |
| 558433 | \$376.10 | TROPHY CLUB PID NO 1 EMERGENCY SERVICE |
| 558434 | \$367.22 | TROPHY CLUB PID NO 1 EMERGENCY SERVICE |
| 558435 | \$361.41 | TROPHY CLUB PID NO 1 EMERGENCY SERVICE |

|        |          |                                        |
|--------|----------|----------------------------------------|
| 558436 | \$314.31 | TROPHY CLUB PID NO 1 EMERGENCY SERVICE |
| 558437 | \$363.85 | TROPHY CLUB PID NO 1 EMERGENCY SERVICE |
| 558438 | \$402.19 | TROPHY CLUB PID NO 1 EMERGENCY SERVICE |
| 558439 | \$394.52 | TROPHY CLUB PID NO 1 EMERGENCY SERVICE |
| 558440 | \$401.76 | TROPHY CLUB PID NO 1 EMERGENCY SERVICE |
| 558441 | \$369.24 | TROPHY CLUB PID NO 1 EMERGENCY SERVICE |
| 558442 | \$344.31 | TROPHY CLUB PID NO 1 EMERGENCY SERVICE |
| 558443 | \$397.44 | TROPHY CLUB PID NO 1 EMERGENCY SERVICE |
| 558444 | \$380.70 | TROPHY CLUB PID NO 1 EMERGENCY SERVICE |
| 558445 | \$352.40 | TROPHY CLUB PID NO 1 EMERGENCY SERVICE |
| 558446 | \$312.17 | TROPHY CLUB PID NO 1 EMERGENCY SERVICE |
| 558447 | \$466.27 | TROPHY CLUB PID NO 1 EMERGENCY SERVICE |
| 558448 | \$374.24 | TROPHY CLUB PID NO 1 EMERGENCY SERVICE |
| 558449 | \$416.41 | TROPHY CLUB PID NO 1 EMERGENCY SERVICE |
| 558450 | \$449.27 | TROPHY CLUB PID NO 1 EMERGENCY SERVICE |
| 558451 | \$391.35 | TROPHY CLUB PID NO 1 EMERGENCY SERVICE |
| 558452 | \$435.95 | TROPHY CLUB PID NO 1 EMERGENCY SERVICE |
| 558453 | \$178.62 | TROPHY CLUB PID NO 1 EMERGENCY SERVICE |
| 558454 | \$451.25 | TROPHY CLUB PID NO 1 EMERGENCY SERVICE |
| 558455 | \$459.39 | TROPHY CLUB PID NO 1 EMERGENCY SERVICE |
| 558456 | \$183.19 | TROPHY CLUB PID NO 1 EMERGENCY SERVICE |
| 558457 | \$448.19 | TROPHY CLUB PID NO 1 EMERGENCY SERVICE |
| 558458 | \$408.35 | TROPHY CLUB PID NO 1 EMERGENCY SERVICE |
| 558459 | \$456.16 | TROPHY CLUB PID NO 1 EMERGENCY SERVICE |
| 558460 | \$404.28 | TROPHY CLUB PID NO 1 EMERGENCY SERVICE |
| 558461 | \$411.69 | TROPHY CLUB PID NO 1 EMERGENCY SERVICE |
| 558462 | \$372.51 | TROPHY CLUB PID NO 1 EMERGENCY SERVICE |
| 558463 | \$355.57 | TROPHY CLUB PID NO 1 EMERGENCY SERVICE |
| 558464 | \$440.78 | TROPHY CLUB PID NO 1 EMERGENCY SERVICE |
| 558465 | \$437.69 | TROPHY CLUB PID NO 1 EMERGENCY SERVICE |
| 558467 | \$409.10 | TROPHY CLUB PID NO 1 EMERGENCY SERVICE |
| 558468 | \$424.61 | TROPHY CLUB PID NO 1 EMERGENCY SERVICE |
| 558469 | \$369.33 | TROPHY CLUB PID NO 1 EMERGENCY SERVICE |
| 558470 | \$372.51 | TROPHY CLUB PID NO 1 EMERGENCY SERVICE |
| 558471 | \$396.53 | TROPHY CLUB PID NO 1 EMERGENCY SERVICE |
| 558472 | \$375.69 | TROPHY CLUB PID NO 1 EMERGENCY SERVICE |
| 558473 | \$377.33 | TROPHY CLUB PID NO 1 EMERGENCY SERVICE |
| 558474 | \$428.13 | TROPHY CLUB PID NO 1 EMERGENCY SERVICE |
| 558475 | \$383.88 | TROPHY CLUB PID NO 1 EMERGENCY SERVICE |
| 558476 | \$351.72 | TROPHY CLUB PID NO 1 EMERGENCY SERVICE |
| 558477 | \$421.13 | TROPHY CLUB PID NO 1 EMERGENCY SERVICE |
| 558478 | \$384.07 | TROPHY CLUB PID NO 1 EMERGENCY SERVICE |
| 558479 | \$415.73 | TROPHY CLUB PID NO 1 EMERGENCY SERVICE |
| 558480 | \$178.58 | TROPHY CLUB PID NO 1 EMERGENCY SERVICE |
| 558481 | \$358.48 | TROPHY CLUB PID NO 1 EMERGENCY SERVICE |
| 558482 | \$406.20 | TROPHY CLUB PID NO 1 EMERGENCY SERVICE |
| 558483 | \$441.34 | TROPHY CLUB PID NO 1 EMERGENCY SERVICE |
| 558484 | \$356.44 | TROPHY CLUB PID NO 1 EMERGENCY SERVICE |
| 558485 | \$427.92 | TROPHY CLUB PID NO 1 EMERGENCY SERVICE |
| 558486 | \$355.09 | TROPHY CLUB PID NO 1 EMERGENCY SERVICE |
| 558487 | \$355.54 | TROPHY CLUB PID NO 1 EMERGENCY SERVICE |
| 558488 | \$390.80 | TROPHY CLUB PID NO 1 EMERGENCY SERVICE |
| 558489 | \$396.51 | TROPHY CLUB PID NO 1 EMERGENCY SERVICE |
| 558490 | \$402.42 | TROPHY CLUB PID NO 1 EMERGENCY SERVICE |
| 558491 | \$378.68 | TROPHY CLUB PID NO 1 EMERGENCY SERVICE |
| 558492 | \$370.59 | TROPHY CLUB PID NO 1 EMERGENCY SERVICE |

|        |          |                                        |
|--------|----------|----------------------------------------|
| 558493 | \$448.08 | TROPHY CLUB PID NO 1 EMERGENCY SERVICE |
| 558494 | \$424.49 | TROPHY CLUB PID NO 1 EMERGENCY SERVICE |
| 558495 | \$407.96 | TROPHY CLUB PID NO 1 EMERGENCY SERVICE |
| 558496 | \$375.98 | TROPHY CLUB PID NO 1 EMERGENCY SERVICE |
| 558497 | \$293.58 | TROPHY CLUB PID NO 1 EMERGENCY SERVICE |
| 558498 | \$336.83 | TROPHY CLUB PID NO 1 EMERGENCY SERVICE |
| 558499 | \$310.19 | TROPHY CLUB PID NO 1 EMERGENCY SERVICE |
| 558501 | \$396.16 | TROPHY CLUB PID NO 1 EMERGENCY SERVICE |
| 558502 | \$415.60 | TROPHY CLUB PID NO 1 EMERGENCY SERVICE |
| 558503 | \$298.49 | TROPHY CLUB PID NO 1 EMERGENCY SERVICE |
| 558504 | \$435.54 | TROPHY CLUB PID NO 1 EMERGENCY SERVICE |
| 558505 | \$381.13 | TROPHY CLUB PID NO 1 EMERGENCY SERVICE |
| 558506 | \$344.99 | TROPHY CLUB PID NO 1 EMERGENCY SERVICE |
| 558507 | \$293.97 | TROPHY CLUB PID NO 1 EMERGENCY SERVICE |
| 558509 | \$259.11 | TROPHY CLUB PID NO 1 EMERGENCY SERVICE |
| 558510 | \$382.04 | TROPHY CLUB PID NO 1 EMERGENCY SERVICE |
| 558511 | \$400.91 | TROPHY CLUB PID NO 1 EMERGENCY SERVICE |
| 558512 | \$426.11 | TROPHY CLUB PID NO 1 EMERGENCY SERVICE |
| 558513 | \$434.37 | TROPHY CLUB PID NO 1 EMERGENCY SERVICE |
| 558514 | \$518.83 | TROPHY CLUB PID NO 1 EMERGENCY SERVICE |
| 558515 | \$468.29 | TROPHY CLUB PID NO 1 EMERGENCY SERVICE |
| 558516 | \$487.16 | TROPHY CLUB PID NO 1 EMERGENCY SERVICE |
| 558517 | \$460.88 | TROPHY CLUB PID NO 1 EMERGENCY SERVICE |
| 558518 | \$225.40 | TROPHY CLUB PID NO 1 EMERGENCY SERVICE |
| 558519 | \$418.96 | TROPHY CLUB PID NO 1 EMERGENCY SERVICE |
| 558520 | \$442.69 | TROPHY CLUB PID NO 1 EMERGENCY SERVICE |
| 558521 | \$406.30 | TROPHY CLUB PID NO 1 EMERGENCY SERVICE |
| 558522 | \$463.22 | TROPHY CLUB PID NO 1 EMERGENCY SERVICE |
| 558523 | \$495.24 | TROPHY CLUB PID NO 1 EMERGENCY SERVICE |
| 558524 | \$433.95 | TROPHY CLUB PID NO 1 EMERGENCY SERVICE |
| 558525 | \$468.29 | TROPHY CLUB PID NO 1 EMERGENCY SERVICE |
| 558526 | \$439.99 | TROPHY CLUB PID NO 1 EMERGENCY SERVICE |
| 558527 | \$377.74 | TROPHY CLUB PID NO 1 EMERGENCY SERVICE |
| 558528 | \$424.18 | TROPHY CLUB PID NO 1 EMERGENCY SERVICE |
| 558529 | \$475.24 | TROPHY CLUB PID NO 1 EMERGENCY SERVICE |
| 558530 | \$397.54 | TROPHY CLUB PID NO 1 EMERGENCY SERVICE |
| 558531 | \$386.09 | TROPHY CLUB PID NO 1 EMERGENCY SERVICE |
| 558532 | \$367.89 | TROPHY CLUB PID NO 1 EMERGENCY SERVICE |
| 558533 | \$372.04 | TROPHY CLUB PID NO 1 EMERGENCY SERVICE |
| 558534 | \$362.50 | TROPHY CLUB PID NO 1 EMERGENCY SERVICE |
| 558535 | \$432.20 | TROPHY CLUB PID NO 1 EMERGENCY SERVICE |
| 558536 | \$375.31 | TROPHY CLUB PID NO 1 EMERGENCY SERVICE |
| 558537 | \$362.14 | TROPHY CLUB PID NO 1 EMERGENCY SERVICE |
| 558538 | \$487.72 | TROPHY CLUB PID NO 1 EMERGENCY SERVICE |
| 558539 | \$353.50 | TROPHY CLUB PID NO 1 EMERGENCY SERVICE |
| 558540 | \$392.15 | TROPHY CLUB PID NO 1 EMERGENCY SERVICE |
| 558541 | \$409.37 | TROPHY CLUB PID NO 1 EMERGENCY SERVICE |
| 558542 | \$390.80 | TROPHY CLUB PID NO 1 EMERGENCY SERVICE |
| 558543 | \$381.80 | TROPHY CLUB PID NO 1 EMERGENCY SERVICE |
| 558544 | \$369.18 | TROPHY CLUB PID NO 1 EMERGENCY SERVICE |
| 558545 | \$395.73 | TROPHY CLUB PID NO 1 EMERGENCY SERVICE |
| 565346 | \$6.33   | TROPHY CLUB PID NO 1 EMERGENCY SERVICE |
| 565839 | \$11.53  | TROPHY CLUB PID NO 1 EMERGENCY SERVICE |
| 567352 | \$431.23 | TROPHY CLUB PID NO 1 EMERGENCY SERVICE |
| 567353 | \$411.02 | TROPHY CLUB PID NO 1 EMERGENCY SERVICE |
| 567354 | \$356.44 | TROPHY CLUB PID NO 1 EMERGENCY SERVICE |

|        |          |                                        |
|--------|----------|----------------------------------------|
| 567355 | \$345.49 | TROPHY CLUB PID NO 1 EMERGENCY SERVICE |
| 567356 | \$196.87 | TROPHY CLUB PID NO 1 EMERGENCY SERVICE |
| 567357 | \$411.64 | TROPHY CLUB PID NO 1 EMERGENCY SERVICE |
| 567358 | \$406.30 | TROPHY CLUB PID NO 1 EMERGENCY SERVICE |
| 567359 | \$412.19 | TROPHY CLUB PID NO 1 EMERGENCY SERVICE |
| 567360 | \$390.37 | TROPHY CLUB PID NO 1 EMERGENCY SERVICE |
| 567361 | \$424.49 | TROPHY CLUB PID NO 1 EMERGENCY SERVICE |
| 567362 | \$422.17 | TROPHY CLUB PID NO 1 EMERGENCY SERVICE |
| 567363 | \$416.41 | TROPHY CLUB PID NO 1 EMERGENCY SERVICE |
| 567364 | \$377.33 | TROPHY CLUB PID NO 1 EMERGENCY SERVICE |
| 567365 | \$384.07 | TROPHY CLUB PID NO 1 EMERGENCY SERVICE |
| 567366 | \$396.58 | TROPHY CLUB PID NO 1 EMERGENCY SERVICE |
| 567367 | \$310.41 | TROPHY CLUB PID NO 1 EMERGENCY SERVICE |
| 567368 | \$303.88 | TROPHY CLUB PID NO 1 EMERGENCY SERVICE |
| 567369 | \$390.80 | TROPHY CLUB PID NO 1 EMERGENCY SERVICE |
| 580345 | \$256.04 | TROPHY CLUB PID NO 1 EMERGENCY SERVICE |
| 580346 | \$313.32 | TROPHY CLUB PID NO 1 EMERGENCY SERVICE |
| 580347 | \$258.63 | TROPHY CLUB PID NO 1 EMERGENCY SERVICE |
| 580348 | \$293.10 | TROPHY CLUB PID NO 1 EMERGENCY SERVICE |
| 580349 | \$263.98 | TROPHY CLUB PID NO 1 EMERGENCY SERVICE |
| 580350 | \$296.47 | TROPHY CLUB PID NO 1 EMERGENCY SERVICE |
| 580351 | \$159.10 | TROPHY CLUB PID NO 1 EMERGENCY SERVICE |
| 580352 | \$301.19 | TROPHY CLUB PID NO 1 EMERGENCY SERVICE |
| 580353 | \$293.02 | TROPHY CLUB PID NO 1 EMERGENCY SERVICE |
| 580354 | \$257.73 | TROPHY CLUB PID NO 1 EMERGENCY SERVICE |
| 580355 | \$325.10 | TROPHY CLUB PID NO 1 EMERGENCY SERVICE |
| 580356 | \$265.29 | TROPHY CLUB PID NO 1 EMERGENCY SERVICE |
| 580357 | \$313.76 | TROPHY CLUB PID NO 1 EMERGENCY SERVICE |
| 580358 | \$266.83 | TROPHY CLUB PID NO 1 EMERGENCY SERVICE |
| 580359 | \$313.32 | TROPHY CLUB PID NO 1 EMERGENCY SERVICE |
| 580360 | \$265.57 | TROPHY CLUB PID NO 1 EMERGENCY SERVICE |
| 580361 | \$128.87 | TROPHY CLUB PID NO 1 EMERGENCY SERVICE |
| 580362 | \$291.72 | TROPHY CLUB PID NO 1 EMERGENCY SERVICE |
| 580363 | \$285.02 | TROPHY CLUB PID NO 1 EMERGENCY SERVICE |
| 580364 | \$257.87 | TROPHY CLUB PID NO 1 EMERGENCY SERVICE |
| 580365 | \$305.23 | TROPHY CLUB PID NO 1 EMERGENCY SERVICE |
| 580366 | \$260.76 | TROPHY CLUB PID NO 1 EMERGENCY SERVICE |
| 580367 | \$264.52 | TROPHY CLUB PID NO 1 EMERGENCY SERVICE |
| 580368 | \$307.31 | TROPHY CLUB PID NO 1 EMERGENCY SERVICE |
| 580369 | \$289.53 | TROPHY CLUB PID NO 1 EMERGENCY SERVICE |
| 580370 | \$277.20 | TROPHY CLUB PID NO 1 EMERGENCY SERVICE |
| 580372 | \$343.16 | TROPHY CLUB PID NO 1 EMERGENCY SERVICE |
| 580373 | \$319.83 | TROPHY CLUB PID NO 1 EMERGENCY SERVICE |
| 580374 | \$271.54 | TROPHY CLUB PID NO 1 EMERGENCY SERVICE |
| 580375 | \$275.47 | TROPHY CLUB PID NO 1 EMERGENCY SERVICE |
| 580376 | \$303.14 | TROPHY CLUB PID NO 1 EMERGENCY SERVICE |
| 580377 | \$313.81 | TROPHY CLUB PID NO 1 EMERGENCY SERVICE |
| 580378 | \$267.63 | TROPHY CLUB PID NO 1 EMERGENCY SERVICE |
| 580379 | \$328.31 | TROPHY CLUB PID NO 1 EMERGENCY SERVICE |
| 580380 | \$294.09 | TROPHY CLUB PID NO 1 EMERGENCY SERVICE |
| 580381 | \$302.54 | TROPHY CLUB PID NO 1 EMERGENCY SERVICE |
| 580382 | \$300.96 | TROPHY CLUB PID NO 1 EMERGENCY SERVICE |
| 580384 | \$272.52 | TROPHY CLUB PID NO 1 EMERGENCY SERVICE |
| 580385 | \$306.92 | TROPHY CLUB PID NO 1 EMERGENCY SERVICE |
| 580386 | \$305.25 | TROPHY CLUB PID NO 1 EMERGENCY SERVICE |
| 580387 | \$294.32 | TROPHY CLUB PID NO 1 EMERGENCY SERVICE |

|        |          |                                        |
|--------|----------|----------------------------------------|
| 580388 | \$265.14 | TROPHY CLUB PID NO 1 EMERGENCY SERVICE |
| 580389 | \$320.73 | TROPHY CLUB PID NO 1 EMERGENCY SERVICE |
| 580390 | \$300.05 | TROPHY CLUB PID NO 1 EMERGENCY SERVICE |
| 580393 | \$292.31 | TROPHY CLUB PID NO 1 EMERGENCY SERVICE |
| 580394 | \$251.26 | TROPHY CLUB PID NO 1 EMERGENCY SERVICE |
| 580395 | \$299.84 | TROPHY CLUB PID NO 1 EMERGENCY SERVICE |
| 580396 | \$259.41 | TROPHY CLUB PID NO 1 EMERGENCY SERVICE |
| 580397 | \$324.24 | TROPHY CLUB PID NO 1 EMERGENCY SERVICE |
| 580398 | \$356.18 | TROPHY CLUB PID NO 1 EMERGENCY SERVICE |
| 580399 | \$303.88 | TROPHY CLUB PID NO 1 EMERGENCY SERVICE |
| 580400 | \$319.47 | TROPHY CLUB PID NO 1 EMERGENCY SERVICE |
| 580401 | \$332.86 | TROPHY CLUB PID NO 1 EMERGENCY SERVICE |
| 580403 | \$329.78 | TROPHY CLUB PID NO 1 EMERGENCY SERVICE |
| 580404 | \$257.72 | TROPHY CLUB PID NO 1 EMERGENCY SERVICE |
| 580405 | \$286.37 | TROPHY CLUB PID NO 1 EMERGENCY SERVICE |
| 580406 | \$300.82 | TROPHY CLUB PID NO 1 EMERGENCY SERVICE |
| 580407 | \$286.37 | TROPHY CLUB PID NO 1 EMERGENCY SERVICE |
| 580408 | \$329.83 | TROPHY CLUB PID NO 1 EMERGENCY SERVICE |
| 580409 | \$326.10 | TROPHY CLUB PID NO 1 EMERGENCY SERVICE |
| 580410 | \$345.66 | TROPHY CLUB PID NO 1 EMERGENCY SERVICE |
| 580411 | \$318.15 | TROPHY CLUB PID NO 1 EMERGENCY SERVICE |
| 580412 | \$252.68 | TROPHY CLUB PID NO 1 EMERGENCY SERVICE |
| 580413 | \$294.57 | TROPHY CLUB PID NO 1 EMERGENCY SERVICE |
| 580414 | \$262.42 | TROPHY CLUB PID NO 1 EMERGENCY SERVICE |
| 583215 | \$337.00 | TROPHY CLUB PID NO 1 EMERGENCY SERVICE |
| 583216 | \$394.01 | TROPHY CLUB PID NO 1 EMERGENCY SERVICE |
| 583217 | \$314.85 | TROPHY CLUB PID NO 1 EMERGENCY SERVICE |
| 583218 | \$307.17 | TROPHY CLUB PID NO 1 EMERGENCY SERVICE |
| 583219 | \$285.44 | TROPHY CLUB PID NO 1 EMERGENCY SERVICE |
| 583220 | \$244.09 | TROPHY CLUB PID NO 1 EMERGENCY SERVICE |
| 583221 | \$299.84 | TROPHY CLUB PID NO 1 EMERGENCY SERVICE |
| 583222 | \$324.12 | TROPHY CLUB PID NO 1 EMERGENCY SERVICE |
| 583223 | \$322.08 | TROPHY CLUB PID NO 1 EMERGENCY SERVICE |
| 583224 | \$356.54 | TROPHY CLUB PID NO 1 EMERGENCY SERVICE |
| 583225 | \$177.82 | TROPHY CLUB PID NO 1 EMERGENCY SERVICE |
| 583226 | \$169.30 | TROPHY CLUB PID NO 1 EMERGENCY SERVICE |
| 583227 | \$336.90 | TROPHY CLUB PID NO 1 EMERGENCY SERVICE |
| 583228 | \$365.85 | TROPHY CLUB PID NO 1 EMERGENCY SERVICE |
| 583229 | \$246.30 | TROPHY CLUB PID NO 1 EMERGENCY SERVICE |
| 583230 | \$306.70 | TROPHY CLUB PID NO 1 EMERGENCY SERVICE |
| 583231 | \$278.28 | TROPHY CLUB PID NO 1 EMERGENCY SERVICE |
| 583232 | \$313.96 | TROPHY CLUB PID NO 1 EMERGENCY SERVICE |
| 583234 | \$285.35 | TROPHY CLUB PID NO 1 EMERGENCY SERVICE |
| 583235 | \$319.44 | TROPHY CLUB PID NO 1 EMERGENCY SERVICE |
| 583236 | \$243.44 | TROPHY CLUB PID NO 1 EMERGENCY SERVICE |
| 583237 | \$297.15 | TROPHY CLUB PID NO 1 EMERGENCY SERVICE |
| 583238 | \$309.95 | TROPHY CLUB PID NO 1 EMERGENCY SERVICE |
| 583239 | \$356.17 | TROPHY CLUB PID NO 1 EMERGENCY SERVICE |
| 583240 | \$186.58 | TROPHY CLUB PID NO 1 EMERGENCY SERVICE |
| 583241 | \$310.62 | TROPHY CLUB PID NO 1 EMERGENCY SERVICE |
| 583242 | \$251.57 | TROPHY CLUB PID NO 1 EMERGENCY SERVICE |
| 583243 | \$322.08 | TROPHY CLUB PID NO 1 EMERGENCY SERVICE |
| 583244 | \$253.21 | TROPHY CLUB PID NO 1 EMERGENCY SERVICE |
| 583245 | \$345.04 | TROPHY CLUB PID NO 1 EMERGENCY SERVICE |
| 583247 | \$413.04 | TROPHY CLUB PID NO 1 EMERGENCY SERVICE |
| 583248 | \$361.16 | TROPHY CLUB PID NO 1 EMERGENCY SERVICE |

|        |          |                                        |
|--------|----------|----------------------------------------|
| 583249 | \$363.85 | TROPHY CLUB PID NO 1 EMERGENCY SERVICE |
| 583250 | \$377.33 | TROPHY CLUB PID NO 1 EMERGENCY SERVICE |
| 583251 | \$356.44 | TROPHY CLUB PID NO 1 EMERGENCY SERVICE |
| 583252 | \$396.60 | TROPHY CLUB PID NO 1 EMERGENCY SERVICE |
| 583253 | \$381.08 | TROPHY CLUB PID NO 1 EMERGENCY SERVICE |
| 583254 | \$321.99 | TROPHY CLUB PID NO 1 EMERGENCY SERVICE |
| 583255 | \$401.96 | TROPHY CLUB PID NO 1 EMERGENCY SERVICE |
| 583256 | \$418.09 | TROPHY CLUB PID NO 1 EMERGENCY SERVICE |
| 583258 | \$337.54 | TROPHY CLUB PID NO 1 EMERGENCY SERVICE |
| 583259 | \$303.31 | TROPHY CLUB PID NO 1 EMERGENCY SERVICE |
| 583260 | \$280.30 | TROPHY CLUB PID NO 1 EMERGENCY SERVICE |
| 583261 | \$245.61 | TROPHY CLUB PID NO 1 EMERGENCY SERVICE |
| 583262 | \$306.58 | TROPHY CLUB PID NO 1 EMERGENCY SERVICE |
| 583263 | \$277.11 | TROPHY CLUB PID NO 1 EMERGENCY SERVICE |
| 583264 | \$241.22 | TROPHY CLUB PID NO 1 EMERGENCY SERVICE |
| 583265 | \$318.75 | TROPHY CLUB PID NO 1 EMERGENCY SERVICE |
| 583266 | \$303.97 | TROPHY CLUB PID NO 1 EMERGENCY SERVICE |
| 583267 | \$328.12 | TROPHY CLUB PID NO 1 EMERGENCY SERVICE |
| 583268 | \$248.63 | TROPHY CLUB PID NO 1 EMERGENCY SERVICE |
| 583269 | \$371.63 | TROPHY CLUB PID NO 1 EMERGENCY SERVICE |
| 583270 | \$256.04 | TROPHY CLUB PID NO 1 EMERGENCY SERVICE |
| 583271 | \$322.15 | TROPHY CLUB PID NO 1 EMERGENCY SERVICE |
| 583272 | \$382.42 | TROPHY CLUB PID NO 1 EMERGENCY SERVICE |
| 583274 | \$416.35 | TROPHY CLUB PID NO 1 EMERGENCY SERVICE |
| 583275 | \$351.39 | TROPHY CLUB PID NO 1 EMERGENCY SERVICE |
| 583276 | \$389.38 | TROPHY CLUB PID NO 1 EMERGENCY SERVICE |
| 583277 | \$380.70 | TROPHY CLUB PID NO 1 EMERGENCY SERVICE |
| 583278 | \$364.64 | TROPHY CLUB PID NO 1 EMERGENCY SERVICE |
| 583279 | \$399.22 | TROPHY CLUB PID NO 1 EMERGENCY SERVICE |
| 583280 | \$391.67 | TROPHY CLUB PID NO 1 EMERGENCY SERVICE |
| 583281 | \$441.43 | TROPHY CLUB PID NO 1 EMERGENCY SERVICE |
| 583282 | \$390.93 | TROPHY CLUB PID NO 1 EMERGENCY SERVICE |
| 583283 | \$417.76 | TROPHY CLUB PID NO 1 EMERGENCY SERVICE |
| 583285 | \$266.26 | TROPHY CLUB PID NO 1 EMERGENCY SERVICE |
| 583286 | \$307.75 | TROPHY CLUB PID NO 1 EMERGENCY SERVICE |
| 583287 | \$296.92 | TROPHY CLUB PID NO 1 EMERGENCY SERVICE |
| 583288 | \$248.54 | TROPHY CLUB PID NO 1 EMERGENCY SERVICE |
| 583289 | \$350.38 | TROPHY CLUB PID NO 1 EMERGENCY SERVICE |
| 583290 | \$247.96 | TROPHY CLUB PID NO 1 EMERGENCY SERVICE |
| 583291 | \$353.75 | TROPHY CLUB PID NO 1 EMERGENCY SERVICE |
| 583292 | \$305.82 | TROPHY CLUB PID NO 1 EMERGENCY SERVICE |
| 583293 | \$279.54 | TROPHY CLUB PID NO 1 EMERGENCY SERVICE |
| 583294 | \$254.68 | TROPHY CLUB PID NO 1 EMERGENCY SERVICE |
| 583295 | \$347.01 | TROPHY CLUB PID NO 1 EMERGENCY SERVICE |
| 583296 | \$331.63 | TROPHY CLUB PID NO 1 EMERGENCY SERVICE |
| 583297 | \$336.21 | TROPHY CLUB PID NO 1 EMERGENCY SERVICE |
| 583298 | \$310.65 | TROPHY CLUB PID NO 1 EMERGENCY SERVICE |
| 583299 | \$327.47 | TROPHY CLUB PID NO 1 EMERGENCY SERVICE |
| 583300 | \$351.11 | TROPHY CLUB PID NO 1 EMERGENCY SERVICE |
| 583301 | \$280.97 | TROPHY CLUB PID NO 1 EMERGENCY SERVICE |
| 583302 | \$281.50 | TROPHY CLUB PID NO 1 EMERGENCY SERVICE |
| 583303 | \$324.85 | TROPHY CLUB PID NO 1 EMERGENCY SERVICE |
| 583304 | \$249.44 | TROPHY CLUB PID NO 1 EMERGENCY SERVICE |
| 583305 | \$306.58 | TROPHY CLUB PID NO 1 EMERGENCY SERVICE |
| 583306 | \$330.84 | TROPHY CLUB PID NO 1 EMERGENCY SERVICE |
| 583307 | \$314.77 | TROPHY CLUB PID NO 1 EMERGENCY SERVICE |

|        |          |                                        |
|--------|----------|----------------------------------------|
| 583308 | \$282.04 | TROPHY CLUB PID NO 1 EMERGENCY SERVICE |
| 583309 | \$250.12 | TROPHY CLUB PID NO 1 EMERGENCY SERVICE |
| 583310 | \$150.51 | TROPHY CLUB PID NO 1 EMERGENCY SERVICE |
| 583311 | \$145.61 | TROPHY CLUB PID NO 1 EMERGENCY SERVICE |
| 583312 | \$262.43 | TROPHY CLUB PID NO 1 EMERGENCY SERVICE |
| 583313 | \$328.14 | TROPHY CLUB PID NO 1 EMERGENCY SERVICE |
| 583314 | \$304.56 | TROPHY CLUB PID NO 1 EMERGENCY SERVICE |
| 583315 | \$249.31 | TROPHY CLUB PID NO 1 EMERGENCY SERVICE |
| 583316 | \$264.33 | TROPHY CLUB PID NO 1 EMERGENCY SERVICE |
| 583317 | \$303.21 | TROPHY CLUB PID NO 1 EMERGENCY SERVICE |
| 583318 | \$167.20 | TROPHY CLUB PID NO 1 EMERGENCY SERVICE |
| 583319 | \$324.97 | TROPHY CLUB PID NO 1 EMERGENCY SERVICE |
| 583320 | \$369.29 | TROPHY CLUB PID NO 1 EMERGENCY SERVICE |
| 583321 | \$370.59 | TROPHY CLUB PID NO 1 EMERGENCY SERVICE |
| 583322 | \$370.59 | TROPHY CLUB PID NO 1 EMERGENCY SERVICE |
| 583323 | \$346.99 | TROPHY CLUB PID NO 1 EMERGENCY SERVICE |
| 583324 | \$303.21 | TROPHY CLUB PID NO 1 EMERGENCY SERVICE |
| 583325 | \$371.65 | TROPHY CLUB PID NO 1 EMERGENCY SERVICE |
| 583329 | \$427.48 | TROPHY CLUB PID NO 1 EMERGENCY SERVICE |
| 583330 | \$308.63 | TROPHY CLUB PID NO 1 EMERGENCY SERVICE |
| 583331 | \$353.07 | TROPHY CLUB PID NO 1 EMERGENCY SERVICE |
| 583332 | \$379.23 | TROPHY CLUB PID NO 1 EMERGENCY SERVICE |
| 583333 | \$354.42 | TROPHY CLUB PID NO 1 EMERGENCY SERVICE |
| 583334 | \$377.74 | TROPHY CLUB PID NO 1 EMERGENCY SERVICE |
| 583335 | \$370.59 | TROPHY CLUB PID NO 1 EMERGENCY SERVICE |
| 583336 | \$415.83 | TROPHY CLUB PID NO 1 EMERGENCY SERVICE |
| 583337 | \$336.90 | TROPHY CLUB PID NO 1 EMERGENCY SERVICE |
| 583338 | \$381.80 | TROPHY CLUB PID NO 1 EMERGENCY SERVICE |
| 583375 | \$338.10 | TROPHY CLUB PID NO 1 EMERGENCY SERVICE |
| 583376 | \$314.39 | TROPHY CLUB PID NO 1 EMERGENCY SERVICE |
| 583377 | \$326.78 | TROPHY CLUB PID NO 1 EMERGENCY SERVICE |
| 583378 | \$247.96 | TROPHY CLUB PID NO 1 EMERGENCY SERVICE |
| 583379 | \$302.06 | TROPHY CLUB PID NO 1 EMERGENCY SERVICE |
| 583380 | \$329.30 | TROPHY CLUB PID NO 1 EMERGENCY SERVICE |
| 583381 | \$292.12 | TROPHY CLUB PID NO 1 EMERGENCY SERVICE |
| 583382 | \$295.79 | TROPHY CLUB PID NO 1 EMERGENCY SERVICE |
| 583383 | \$248.31 | TROPHY CLUB PID NO 1 EMERGENCY SERVICE |
| 583384 | \$319.78 | TROPHY CLUB PID NO 1 EMERGENCY SERVICE |
| 583385 | \$316.08 | TROPHY CLUB PID NO 1 EMERGENCY SERVICE |
| 583386 | \$249.33 | TROPHY CLUB PID NO 1 EMERGENCY SERVICE |
| 583387 | \$316.05 | TROPHY CLUB PID NO 1 EMERGENCY SERVICE |
| 583388 | \$246.47 | TROPHY CLUB PID NO 1 EMERGENCY SERVICE |
| 583389 | \$346.73 | TROPHY CLUB PID NO 1 EMERGENCY SERVICE |
| 583390 | \$362.91 | TROPHY CLUB PID NO 1 EMERGENCY SERVICE |
| 583391 | \$331.28 | TROPHY CLUB PID NO 1 EMERGENCY SERVICE |
| 583392 | \$318.25 | TROPHY CLUB PID NO 1 EMERGENCY SERVICE |
| 583393 | \$316.64 | TROPHY CLUB PID NO 1 EMERGENCY SERVICE |
| 583394 | \$287.71 | TROPHY CLUB PID NO 1 EMERGENCY SERVICE |
| 583395 | \$315.16 | TROPHY CLUB PID NO 1 EMERGENCY SERVICE |
| 583396 | \$244.00 | TROPHY CLUB PID NO 1 EMERGENCY SERVICE |
| 583398 | \$334.66 | TROPHY CLUB PID NO 1 EMERGENCY SERVICE |
| 583399 | \$279.18 | TROPHY CLUB PID NO 1 EMERGENCY SERVICE |
| 583400 | \$303.54 | TROPHY CLUB PID NO 1 EMERGENCY SERVICE |
| 583401 | \$306.58 | TROPHY CLUB PID NO 1 EMERGENCY SERVICE |
| 583402 | \$251.05 | TROPHY CLUB PID NO 1 EMERGENCY SERVICE |
| 583403 | \$327.24 | TROPHY CLUB PID NO 1 EMERGENCY SERVICE |

|        |          |                                        |
|--------|----------|----------------------------------------|
| 583404 | \$271.83 | TROPHY CLUB PID NO 1 EMERGENCY SERVICE |
| 583405 | \$358.46 | TROPHY CLUB PID NO 1 EMERGENCY SERVICE |
| 583406 | \$271.54 | TROPHY CLUB PID NO 1 EMERGENCY SERVICE |
| 583407 | \$244.64 | TROPHY CLUB PID NO 1 EMERGENCY SERVICE |
| 583408 | \$315.34 | TROPHY CLUB PID NO 1 EMERGENCY SERVICE |
| 583409 | \$355.09 | TROPHY CLUB PID NO 1 EMERGENCY SERVICE |
| 583410 | \$302.45 | TROPHY CLUB PID NO 1 EMERGENCY SERVICE |
| 583411 | \$350.70 | TROPHY CLUB PID NO 1 EMERGENCY SERVICE |
| 583412 | \$301.86 | TROPHY CLUB PID NO 1 EMERGENCY SERVICE |
| 583413 | \$243.70 | TROPHY CLUB PID NO 1 EMERGENCY SERVICE |
| 583414 | \$290.81 | TROPHY CLUB PID NO 1 EMERGENCY SERVICE |
| 583415 | \$318.43 | TROPHY CLUB PID NO 1 EMERGENCY SERVICE |
| 583416 | \$302.18 | TROPHY CLUB PID NO 1 EMERGENCY SERVICE |
| 583417 | \$250.22 | TROPHY CLUB PID NO 1 EMERGENCY SERVICE |
| 583418 | \$335.55 | TROPHY CLUB PID NO 1 EMERGENCY SERVICE |
| 583419 | \$354.54 | TROPHY CLUB PID NO 1 EMERGENCY SERVICE |
| 583420 | \$316.01 | TROPHY CLUB PID NO 1 EMERGENCY SERVICE |
| 583421 | \$243.59 | TROPHY CLUB PID NO 1 EMERGENCY SERVICE |
| 583422 | \$277.23 | TROPHY CLUB PID NO 1 EMERGENCY SERVICE |
| 583423 | \$307.51 | TROPHY CLUB PID NO 1 EMERGENCY SERVICE |
| 583424 | \$338.68 | TROPHY CLUB PID NO 1 EMERGENCY SERVICE |
| 583425 | \$260.42 | TROPHY CLUB PID NO 1 EMERGENCY SERVICE |
| 583426 | \$260.14 | TROPHY CLUB PID NO 1 EMERGENCY SERVICE |
| 583427 | \$288.66 | TROPHY CLUB PID NO 1 EMERGENCY SERVICE |
| 583428 | \$347.01 | TROPHY CLUB PID NO 1 EMERGENCY SERVICE |
| 583429 | \$335.96 | TROPHY CLUB PID NO 1 EMERGENCY SERVICE |
| 583470 | \$362.50 | TROPHY CLUB PID NO 1 EMERGENCY SERVICE |
| 583471 | \$329.46 | TROPHY CLUB PID NO 1 EMERGENCY SERVICE |
| 583472 | \$317.33 | TROPHY CLUB PID NO 1 EMERGENCY SERVICE |
| 583473 | \$344.70 | TROPHY CLUB PID NO 1 EMERGENCY SERVICE |
| 583474 | \$328.42 | TROPHY CLUB PID NO 1 EMERGENCY SERVICE |
| 583475 | \$315.64 | TROPHY CLUB PID NO 1 EMERGENCY SERVICE |
| 583476 | \$318.99 | TROPHY CLUB PID NO 1 EMERGENCY SERVICE |
| 583477 | \$344.70 | TROPHY CLUB PID NO 1 EMERGENCY SERVICE |
| 583478 | \$343.31 | TROPHY CLUB PID NO 1 EMERGENCY SERVICE |
| 583479 | \$315.52 | TROPHY CLUB PID NO 1 EMERGENCY SERVICE |
| 583480 | \$259.41 | TROPHY CLUB PID NO 1 EMERGENCY SERVICE |
| 583481 | \$389.25 | TROPHY CLUB PID NO 1 EMERGENCY SERVICE |
| 583482 | \$363.85 | TROPHY CLUB PID NO 1 EMERGENCY SERVICE |
| 583483 | \$331.66 | TROPHY CLUB PID NO 1 EMERGENCY SERVICE |
| 583485 | \$328.99 | TROPHY CLUB PID NO 1 EMERGENCY SERVICE |
| 583486 | \$349.02 | TROPHY CLUB PID NO 1 EMERGENCY SERVICE |
| 583487 | \$374.63 | TROPHY CLUB PID NO 1 EMERGENCY SERVICE |
| 583488 | \$386.09 | TROPHY CLUB PID NO 1 EMERGENCY SERVICE |
| 583489 | \$350.38 | TROPHY CLUB PID NO 1 EMERGENCY SERVICE |
| 583490 | \$340.27 | TROPHY CLUB PID NO 1 EMERGENCY SERVICE |
| 583491 | \$373.96 | TROPHY CLUB PID NO 1 EMERGENCY SERVICE |
| 583492 | \$333.53 | TROPHY CLUB PID NO 1 EMERGENCY SERVICE |
| 583493 | \$314.66 | TROPHY CLUB PID NO 1 EMERGENCY SERVICE |
| 583494 | \$320.73 | TROPHY CLUB PID NO 1 EMERGENCY SERVICE |
| 583495 | \$367.15 | TROPHY CLUB PID NO 1 EMERGENCY SERVICE |
| 583498 | \$362.06 | TROPHY CLUB PID NO 1 EMERGENCY SERVICE |
| 583499 | \$367.22 | TROPHY CLUB PID NO 1 EMERGENCY SERVICE |
| 583500 | \$369.59 | TROPHY CLUB PID NO 1 EMERGENCY SERVICE |
| 583501 | \$309.18 | TROPHY CLUB PID NO 1 EMERGENCY SERVICE |
| 583502 | \$313.62 | TROPHY CLUB PID NO 1 EMERGENCY SERVICE |



|        |          |                                        |
|--------|----------|----------------------------------------|
| 583503 | \$317.36 | TROPHY CLUB PID NO 1 EMERGENCY SERVICE |
| 583504 | \$309.15 | TROPHY CLUB PID NO 1 EMERGENCY SERVICE |
| 583505 | \$324.10 | TROPHY CLUB PID NO 1 EMERGENCY SERVICE |
| 583506 | \$350.26 | TROPHY CLUB PID NO 1 EMERGENCY SERVICE |
| 583507 | \$331.89 | TROPHY CLUB PID NO 1 EMERGENCY SERVICE |
| 583508 | \$307.74 | TROPHY CLUB PID NO 1 EMERGENCY SERVICE |
| 583509 | \$344.65 | TROPHY CLUB PID NO 1 EMERGENCY SERVICE |
| 583510 | \$374.57 | TROPHY CLUB PID NO 1 EMERGENCY SERVICE |
| 583511 | \$300.51 | TROPHY CLUB PID NO 1 EMERGENCY SERVICE |
| 583512 | \$298.98 | TROPHY CLUB PID NO 1 EMERGENCY SERVICE |
| 583513 | \$340.30 | TROPHY CLUB PID NO 1 EMERGENCY SERVICE |
| 583514 | \$319.79 | TROPHY CLUB PID NO 1 EMERGENCY SERVICE |
| 583519 | \$419.63 | TROPHY CLUB PID NO 1 EMERGENCY SERVICE |
| 583520 | \$368.47 | TROPHY CLUB PID NO 1 EMERGENCY SERVICE |
| 583521 | \$427.86 | TROPHY CLUB PID NO 1 EMERGENCY SERVICE |
| 583522 | \$416.55 | TROPHY CLUB PID NO 1 EMERGENCY SERVICE |
| 583523 | \$403.67 | TROPHY CLUB PID NO 1 EMERGENCY SERVICE |
| 583524 | \$395.08 | TROPHY CLUB PID NO 1 EMERGENCY SERVICE |
| 583525 | \$366.16 | TROPHY CLUB PID NO 1 EMERGENCY SERVICE |
| 583526 | \$404.28 | TROPHY CLUB PID NO 1 EMERGENCY SERVICE |
| 583527 | \$432.67 | TROPHY CLUB PID NO 1 EMERGENCY SERVICE |
| 583528 | \$392.29 | TROPHY CLUB PID NO 1 EMERGENCY SERVICE |
| 583529 | \$398.97 | TROPHY CLUB PID NO 1 EMERGENCY SERVICE |
| 583530 | \$415.76 | TROPHY CLUB PID NO 1 EMERGENCY SERVICE |
| 583531 | \$353.81 | TROPHY CLUB PID NO 1 EMERGENCY SERVICE |
| 583532 | \$365.20 | TROPHY CLUB PID NO 1 EMERGENCY SERVICE |
| 583533 | \$377.33 | TROPHY CLUB PID NO 1 EMERGENCY SERVICE |
| 583534 | \$419.10 | TROPHY CLUB PID NO 1 EMERGENCY SERVICE |
| 583535 | \$426.55 | TROPHY CLUB PID NO 1 EMERGENCY SERVICE |
| 583536 | \$404.73 | TROPHY CLUB PID NO 1 EMERGENCY SERVICE |
| 583537 | \$338.24 | TROPHY CLUB PID NO 1 EMERGENCY SERVICE |
| 583538 | \$412.80 | TROPHY CLUB PID NO 1 EMERGENCY SERVICE |
| 583539 | \$209.35 | TROPHY CLUB PID NO 1 EMERGENCY SERVICE |
| 583540 | \$406.72 | TROPHY CLUB PID NO 1 EMERGENCY SERVICE |
| 583541 | \$404.28 | TROPHY CLUB PID NO 1 EMERGENCY SERVICE |
| 583542 | \$427.86 | TROPHY CLUB PID NO 1 EMERGENCY SERVICE |
| 583543 | \$418.37 | TROPHY CLUB PID NO 1 EMERGENCY SERVICE |
| 583544 | \$426.52 | TROPHY CLUB PID NO 1 EMERGENCY SERVICE |
| 583545 | \$394.17 | TROPHY CLUB PID NO 1 EMERGENCY SERVICE |
| 583546 | \$375.80 | TROPHY CLUB PID NO 1 EMERGENCY SERVICE |
| 583547 | \$342.66 | TROPHY CLUB PID NO 1 EMERGENCY SERVICE |
| 583548 | \$404.28 | TROPHY CLUB PID NO 1 EMERGENCY SERVICE |
| 583550 | \$485.21 | TROPHY CLUB PID NO 1 EMERGENCY SERVICE |
| 583551 | \$384.74 | TROPHY CLUB PID NO 1 EMERGENCY SERVICE |
| 583552 | \$398.89 | TROPHY CLUB PID NO 1 EMERGENCY SERVICE |
| 583553 | \$217.23 | TROPHY CLUB PID NO 1 EMERGENCY SERVICE |
| 583554 | \$399.82 | TROPHY CLUB PID NO 1 EMERGENCY SERVICE |
| 583555 | \$302.84 | TROPHY CLUB PID NO 1 EMERGENCY SERVICE |
| 583556 | \$330.97 | TROPHY CLUB PID NO 1 EMERGENCY SERVICE |
| 583557 | \$392.13 | TROPHY CLUB PID NO 1 EMERGENCY SERVICE |
| 583558 | \$482.72 | TROPHY CLUB PID NO 1 EMERGENCY SERVICE |
| 583559 | \$397.54 | TROPHY CLUB PID NO 1 EMERGENCY SERVICE |
| 583560 | \$416.24 | TROPHY CLUB PID NO 1 EMERGENCY SERVICE |
| 583561 | \$370.31 | TROPHY CLUB PID NO 1 EMERGENCY SERVICE |
| 583562 | \$386.09 | TROPHY CLUB PID NO 1 EMERGENCY SERVICE |
| 583563 | \$428.49 | TROPHY CLUB PID NO 1 EMERGENCY SERVICE |

|        |          |                                        |
|--------|----------|----------------------------------------|
| 583564 | \$363.85 | TROPHY CLUB PID NO 1 EMERGENCY SERVICE |
| 583565 | \$365.48 | TROPHY CLUB PID NO 1 EMERGENCY SERVICE |
| 583566 | \$411.25 | TROPHY CLUB PID NO 1 EMERGENCY SERVICE |
| 583567 | \$384.07 | TROPHY CLUB PID NO 1 EMERGENCY SERVICE |
| 583573 | \$375.98 | TROPHY CLUB PID NO 1 EMERGENCY SERVICE |
| 583574 | \$362.50 | TROPHY CLUB PID NO 1 EMERGENCY SERVICE |
| 583575 | \$391.48 | TROPHY CLUB PID NO 1 EMERGENCY SERVICE |
| 583576 | \$378.68 | TROPHY CLUB PID NO 1 EMERGENCY SERVICE |
| 583577 | \$371.26 | TROPHY CLUB PID NO 1 EMERGENCY SERVICE |
| 583578 | \$355.37 | TROPHY CLUB PID NO 1 EMERGENCY SERVICE |
| 583579 | \$337.57 | TROPHY CLUB PID NO 1 EMERGENCY SERVICE |
| 583580 | \$288.44 | TROPHY CLUB PID NO 1 EMERGENCY SERVICE |
| 583581 | \$418.02 | TROPHY CLUB PID NO 1 EMERGENCY SERVICE |
| 583582 | \$390.76 | TROPHY CLUB PID NO 1 EMERGENCY SERVICE |
| 583583 | \$442.69 | TROPHY CLUB PID NO 1 EMERGENCY SERVICE |
| 583584 | \$400.03 | TROPHY CLUB PID NO 1 EMERGENCY SERVICE |
| 583585 | \$387.44 | TROPHY CLUB PID NO 1 EMERGENCY SERVICE |
| 583586 | \$374.63 | TROPHY CLUB PID NO 1 EMERGENCY SERVICE |
| 583587 | \$362.48 | TROPHY CLUB PID NO 1 EMERGENCY SERVICE |
| 583588 | \$353.94 | TROPHY CLUB PID NO 1 EMERGENCY SERVICE |
| 583589 | \$390.46 | TROPHY CLUB PID NO 1 EMERGENCY SERVICE |
| 583590 | \$380.02 | TROPHY CLUB PID NO 1 EMERGENCY SERVICE |
| 583591 | \$397.31 | TROPHY CLUB PID NO 1 EMERGENCY SERVICE |
| 583592 | \$381.01 | TROPHY CLUB PID NO 1 EMERGENCY SERVICE |
| 583593 | \$377.33 | TROPHY CLUB PID NO 1 EMERGENCY SERVICE |
| 583594 | \$377.33 | TROPHY CLUB PID NO 1 EMERGENCY SERVICE |
| 583595 | \$380.70 | TROPHY CLUB PID NO 1 EMERGENCY SERVICE |
| 583596 | \$428.54 | TROPHY CLUB PID NO 1 EMERGENCY SERVICE |
| 583597 | \$365.22 | TROPHY CLUB PID NO 1 EMERGENCY SERVICE |
| 583598 | \$377.33 | TROPHY CLUB PID NO 1 EMERGENCY SERVICE |
| 583599 | \$414.24 | TROPHY CLUB PID NO 1 EMERGENCY SERVICE |
| 583600 | \$411.35 | TROPHY CLUB PID NO 1 EMERGENCY SERVICE |
| 583601 | \$295.41 | TROPHY CLUB PID NO 1 EMERGENCY SERVICE |
| 583602 | \$384.59 | TROPHY CLUB PID NO 1 EMERGENCY SERVICE |
| 583603 | \$392.15 | TROPHY CLUB PID NO 1 EMERGENCY SERVICE |
| 583604 | \$398.92 | TROPHY CLUB PID NO 1 EMERGENCY SERVICE |
| 583605 | \$411.02 | TROPHY CLUB PID NO 1 EMERGENCY SERVICE |
| 583606 | \$387.27 | TROPHY CLUB PID NO 1 EMERGENCY SERVICE |
| 583607 | \$384.07 | TROPHY CLUB PID NO 1 EMERGENCY SERVICE |
| 583608 | \$290.60 | TROPHY CLUB PID NO 1 EMERGENCY SERVICE |
| 583609 | \$381.37 | TROPHY CLUB PID NO 1 EMERGENCY SERVICE |
| 583612 | \$350.38 | TROPHY CLUB PID NO 1 EMERGENCY SERVICE |
| 583613 | \$411.39 | TROPHY CLUB PID NO 1 EMERGENCY SERVICE |
| 583614 | \$400.18 | TROPHY CLUB PID NO 1 EMERGENCY SERVICE |
| 583615 | \$413.04 | TROPHY CLUB PID NO 1 EMERGENCY SERVICE |
| 583616 | \$340.27 | TROPHY CLUB PID NO 1 EMERGENCY SERVICE |
| 583617 | \$340.66 | TROPHY CLUB PID NO 1 EMERGENCY SERVICE |
| 583618 | \$365.01 | TROPHY CLUB PID NO 1 EMERGENCY SERVICE |
| 583619 | \$388.00 | TROPHY CLUB PID NO 1 EMERGENCY SERVICE |
| 583620 | \$414.30 | TROPHY CLUB PID NO 1 EMERGENCY SERVICE |
| 583621 | \$418.43 | TROPHY CLUB PID NO 1 EMERGENCY SERVICE |
| 583622 | \$379.35 | TROPHY CLUB PID NO 1 EMERGENCY SERVICE |
| 583623 | \$399.58 | TROPHY CLUB PID NO 1 EMERGENCY SERVICE |
| 583624 | \$398.89 | TROPHY CLUB PID NO 1 EMERGENCY SERVICE |
| 583625 | \$210.14 | TROPHY CLUB PID NO 1 EMERGENCY SERVICE |
| 583626 | \$407.14 | TROPHY CLUB PID NO 1 EMERGENCY SERVICE |

|        |          |                                        |
|--------|----------|----------------------------------------|
| 583627 | \$177.28 | TROPHY CLUB PID NO 1 EMERGENCY SERVICE |
| 583628 | \$400.91 | TROPHY CLUB PID NO 1 EMERGENCY SERVICE |
| 583629 | \$396.25 | TROPHY CLUB PID NO 1 EMERGENCY SERVICE |
| 583630 | \$369.78 | TROPHY CLUB PID NO 1 EMERGENCY SERVICE |
| 583631 | \$447.40 | TROPHY CLUB PID NO 1 EMERGENCY SERVICE |
| 583632 | \$438.41 | TROPHY CLUB PID NO 1 EMERGENCY SERVICE |
| 583633 | \$341.25 | TROPHY CLUB PID NO 1 EMERGENCY SERVICE |
| 583634 | \$433.25 | TROPHY CLUB PID NO 1 EMERGENCY SERVICE |
| 583643 | \$378.66 | TROPHY CLUB PID NO 1 EMERGENCY SERVICE |
| 583644 | \$354.00 | TROPHY CLUB PID NO 1 EMERGENCY SERVICE |
| 583645 | \$314.05 | TROPHY CLUB PID NO 1 EMERGENCY SERVICE |
| 583646 | \$320.65 | TROPHY CLUB PID NO 1 EMERGENCY SERVICE |
| 583647 | \$333.22 | TROPHY CLUB PID NO 1 EMERGENCY SERVICE |
| 583648 | \$384.36 | TROPHY CLUB PID NO 1 EMERGENCY SERVICE |
| 583649 | \$353.80 | TROPHY CLUB PID NO 1 EMERGENCY SERVICE |
| 583650 | \$375.95 | TROPHY CLUB PID NO 1 EMERGENCY SERVICE |
| 583651 | \$314.72 | TROPHY CLUB PID NO 1 EMERGENCY SERVICE |
| 583652 | \$352.40 | TROPHY CLUB PID NO 1 EMERGENCY SERVICE |
| 583653 | \$395.29 | TROPHY CLUB PID NO 1 EMERGENCY SERVICE |
| 583654 | \$353.07 | TROPHY CLUB PID NO 1 EMERGENCY SERVICE |
| 583655 | \$370.34 | TROPHY CLUB PID NO 1 EMERGENCY SERVICE |
| 583656 | \$341.62 | TROPHY CLUB PID NO 1 EMERGENCY SERVICE |
| 583657 | \$336.14 | TROPHY CLUB PID NO 1 EMERGENCY SERVICE |
| 583658 | \$354.93 | TROPHY CLUB PID NO 1 EMERGENCY SERVICE |
| 583659 | \$333.85 | TROPHY CLUB PID NO 1 EMERGENCY SERVICE |
| 583660 | \$328.35 | TROPHY CLUB PID NO 1 EMERGENCY SERVICE |
| 583661 | \$326.58 | TROPHY CLUB PID NO 1 EMERGENCY SERVICE |
| 583662 | \$357.38 | TROPHY CLUB PID NO 1 EMERGENCY SERVICE |
| 583663 | \$392.83 | TROPHY CLUB PID NO 1 EMERGENCY SERVICE |
| 583664 | \$372.54 | TROPHY CLUB PID NO 1 EMERGENCY SERVICE |
| 583665 | \$299.84 | TROPHY CLUB PID NO 1 EMERGENCY SERVICE |
| 583666 | \$320.17 | TROPHY CLUB PID NO 1 EMERGENCY SERVICE |
| 583667 | \$335.72 | TROPHY CLUB PID NO 1 EMERGENCY SERVICE |
| 583668 | \$361.66 | TROPHY CLUB PID NO 1 EMERGENCY SERVICE |
| 583669 | \$322.79 | TROPHY CLUB PID NO 1 EMERGENCY SERVICE |
| 583670 | \$328.12 | TROPHY CLUB PID NO 1 EMERGENCY SERVICE |
| 583671 | \$325.68 | TROPHY CLUB PID NO 1 EMERGENCY SERVICE |
| 583672 | \$355.87 | TROPHY CLUB PID NO 1 EMERGENCY SERVICE |
| 583673 | \$318.37 | TROPHY CLUB PID NO 1 EMERGENCY SERVICE |
| 583674 | \$380.70 | TROPHY CLUB PID NO 1 EMERGENCY SERVICE |
| 583675 | \$379.35 | TROPHY CLUB PID NO 1 EMERGENCY SERVICE |
| 583676 | \$372.61 | TROPHY CLUB PID NO 1 EMERGENCY SERVICE |
| 583678 | \$389.38 | TROPHY CLUB PID NO 1 EMERGENCY SERVICE |
| 583679 | \$336.67 | TROPHY CLUB PID NO 1 EMERGENCY SERVICE |
| 583680 | \$326.79 | TROPHY CLUB PID NO 1 EMERGENCY SERVICE |
| 583681 | \$348.35 | TROPHY CLUB PID NO 1 EMERGENCY SERVICE |
| 583682 | \$350.10 | TROPHY CLUB PID NO 1 EMERGENCY SERVICE |
| 583683 | \$327.20 | TROPHY CLUB PID NO 1 EMERGENCY SERVICE |
| 583684 | \$350.31 | TROPHY CLUB PID NO 1 EMERGENCY SERVICE |
| 583685 | \$319.25 | TROPHY CLUB PID NO 1 EMERGENCY SERVICE |
| 583686 | \$323.95 | TROPHY CLUB PID NO 1 EMERGENCY SERVICE |
| 583687 | \$369.28 | TROPHY CLUB PID NO 1 EMERGENCY SERVICE |
| 583688 | \$333.84 | TROPHY CLUB PID NO 1 EMERGENCY SERVICE |
| 583689 | \$326.79 | TROPHY CLUB PID NO 1 EMERGENCY SERVICE |
| 583690 | \$353.75 | TROPHY CLUB PID NO 1 EMERGENCY SERVICE |
| 583691 | \$197.68 | TROPHY CLUB PID NO 1 EMERGENCY SERVICE |

|        |          |                                        |
|--------|----------|----------------------------------------|
| 583692 | \$265.23 | TROPHY CLUB PID NO 1 EMERGENCY SERVICE |
| 583693 | \$378.62 | TROPHY CLUB PID NO 1 EMERGENCY SERVICE |
| 611444 | \$96.68  | TROPHY CLUB PID NO 1 EMERGENCY SERVICE |
| 622299 | \$428.58 | TROPHY CLUB PID NO 1 EMERGENCY SERVICE |
| 622300 | \$374.12 | TROPHY CLUB PID NO 1 EMERGENCY SERVICE |
| 622301 | \$188.08 | TROPHY CLUB PID NO 1 EMERGENCY SERVICE |
| 622302 | \$410.00 | TROPHY CLUB PID NO 1 EMERGENCY SERVICE |
| 622303 | \$424.28 | TROPHY CLUB PID NO 1 EMERGENCY SERVICE |
| 622304 | \$443.36 | TROPHY CLUB PID NO 1 EMERGENCY SERVICE |
| 622305 | \$407.65 | TROPHY CLUB PID NO 1 EMERGENCY SERVICE |
| 622306 | \$398.10 | TROPHY CLUB PID NO 1 EMERGENCY SERVICE |
| 622307 | \$347.39 | TROPHY CLUB PID NO 1 EMERGENCY SERVICE |
| 622308 | \$381.91 | TROPHY CLUB PID NO 1 EMERGENCY SERVICE |
| 622309 | \$426.52 | TROPHY CLUB PID NO 1 EMERGENCY SERVICE |
| 622310 | \$425.83 | TROPHY CLUB PID NO 1 EMERGENCY SERVICE |
| 622311 | \$410.73 | TROPHY CLUB PID NO 1 EMERGENCY SERVICE |
| 622312 | \$364.53 | TROPHY CLUB PID NO 1 EMERGENCY SERVICE |
| 622313 | \$429.95 | TROPHY CLUB PID NO 1 EMERGENCY SERVICE |
| 622314 | \$358.70 | TROPHY CLUB PID NO 1 EMERGENCY SERVICE |
| 622315 | \$328.95 | TROPHY CLUB PID NO 1 EMERGENCY SERVICE |
| 622316 | \$387.97 | TROPHY CLUB PID NO 1 EMERGENCY SERVICE |
| 622317 | \$396.90 | TROPHY CLUB PID NO 1 EMERGENCY SERVICE |
| 622318 | \$426.64 | TROPHY CLUB PID NO 1 EMERGENCY SERVICE |
| 622319 | \$442.77 | TROPHY CLUB PID NO 1 EMERGENCY SERVICE |
| 622320 | \$345.98 | TROPHY CLUB PID NO 1 EMERGENCY SERVICE |
| 622321 | \$445.17 | TROPHY CLUB PID NO 1 EMERGENCY SERVICE |
| 622322 | \$188.98 | TROPHY CLUB PID NO 1 EMERGENCY SERVICE |
| 622323 | \$349.92 | TROPHY CLUB PID NO 1 EMERGENCY SERVICE |
| 622324 | \$457.83 | TROPHY CLUB PID NO 1 EMERGENCY SERVICE |
| 622325 | \$353.48 | TROPHY CLUB PID NO 1 EMERGENCY SERVICE |
| 622326 | \$385.42 | TROPHY CLUB PID NO 1 EMERGENCY SERVICE |
| 622327 | \$425.28 | TROPHY CLUB PID NO 1 EMERGENCY SERVICE |
| 622328 | \$342.96 | TROPHY CLUB PID NO 1 EMERGENCY SERVICE |
| 622329 | \$384.07 | TROPHY CLUB PID NO 1 EMERGENCY SERVICE |
| 622330 | \$427.97 | TROPHY CLUB PID NO 1 EMERGENCY SERVICE |
| 631471 | \$312.32 | TROPHY CLUB PID NO 1 EMERGENCY SERVICE |
| 635052 | \$367.89 | TROPHY CLUB PID NO 1 EMERGENCY SERVICE |
| 635053 | \$364.90 | TROPHY CLUB PID NO 1 EMERGENCY SERVICE |
| 635054 | \$382.72 | TROPHY CLUB PID NO 1 EMERGENCY SERVICE |
| 635055 | \$364.17 | TROPHY CLUB PID NO 1 EMERGENCY SERVICE |
| 635056 | \$273.85 | TROPHY CLUB PID NO 1 EMERGENCY SERVICE |
| 635057 | \$364.17 | TROPHY CLUB PID NO 1 EMERGENCY SERVICE |
| 635058 | \$361.24 | TROPHY CLUB PID NO 1 EMERGENCY SERVICE |
| 635059 | \$403.37 | TROPHY CLUB PID NO 1 EMERGENCY SERVICE |
| 635060 | \$394.85 | TROPHY CLUB PID NO 1 EMERGENCY SERVICE |
| 635061 | \$382.04 | TROPHY CLUB PID NO 1 EMERGENCY SERVICE |
| 635062 | \$407.08 | TROPHY CLUB PID NO 1 EMERGENCY SERVICE |
| 635063 | \$386.76 | TROPHY CLUB PID NO 1 EMERGENCY SERVICE |
| 635064 | \$386.15 | TROPHY CLUB PID NO 1 EMERGENCY SERVICE |
| 635065 | \$359.22 | TROPHY CLUB PID NO 1 EMERGENCY SERVICE |
| 635066 | \$367.93 | TROPHY CLUB PID NO 1 EMERGENCY SERVICE |
| 635067 | \$381.56 | TROPHY CLUB PID NO 1 EMERGENCY SERVICE |
| 635068 | \$349.70 | TROPHY CLUB PID NO 1 EMERGENCY SERVICE |
| 635069 | \$364.17 | TROPHY CLUB PID NO 1 EMERGENCY SERVICE |
| 635070 | \$347.68 | TROPHY CLUB PID NO 1 EMERGENCY SERVICE |
| 635071 | \$391.68 | TROPHY CLUB PID NO 1 EMERGENCY SERVICE |

|        |          |                                        |
|--------|----------|----------------------------------------|
| 635072 | \$390.84 | TROPHY CLUB PID NO 1 EMERGENCY SERVICE |
| 635073 | \$390.13 | TROPHY CLUB PID NO 1 EMERGENCY SERVICE |
| 635074 | \$373.98 | TROPHY CLUB PID NO 1 EMERGENCY SERVICE |
| 635075 | \$379.35 | TROPHY CLUB PID NO 1 EMERGENCY SERVICE |
| 635076 | \$398.89 | TROPHY CLUB PID NO 1 EMERGENCY SERVICE |
| 635077 | \$397.07 | TROPHY CLUB PID NO 1 EMERGENCY SERVICE |
| 635078 | \$435.69 | TROPHY CLUB PID NO 1 EMERGENCY SERVICE |
| 635079 | \$311.30 | TROPHY CLUB PID NO 1 EMERGENCY SERVICE |
| 635080 | \$300.79 | TROPHY CLUB PID NO 1 EMERGENCY SERVICE |
| 635081 | \$370.59 | TROPHY CLUB PID NO 1 EMERGENCY SERVICE |
| 635082 | \$325.60 | TROPHY CLUB PID NO 1 EMERGENCY SERVICE |
| 635083 | \$369.11 | TROPHY CLUB PID NO 1 EMERGENCY SERVICE |
| 635084 | \$382.86 | TROPHY CLUB PID NO 1 EMERGENCY SERVICE |
| 635085 | \$364.17 | TROPHY CLUB PID NO 1 EMERGENCY SERVICE |
| 635086 | \$365.20 | TROPHY CLUB PID NO 1 EMERGENCY SERVICE |
| 635087 | \$414.39 | TROPHY CLUB PID NO 1 EMERGENCY SERVICE |
| 635088 | \$417.76 | TROPHY CLUB PID NO 1 EMERGENCY SERVICE |
| 635089 | \$398.97 | TROPHY CLUB PID NO 1 EMERGENCY SERVICE |
| 635090 | \$404.28 | TROPHY CLUB PID NO 1 EMERGENCY SERVICE |
| 635091 | \$368.57 | TROPHY CLUB PID NO 1 EMERGENCY SERVICE |
| 635092 | \$384.07 | TROPHY CLUB PID NO 1 EMERGENCY SERVICE |
| 635093 | \$376.17 | TROPHY CLUB PID NO 1 EMERGENCY SERVICE |
| 635094 | \$399.26 | TROPHY CLUB PID NO 1 EMERGENCY SERVICE |
| 635095 | \$408.99 | TROPHY CLUB PID NO 1 EMERGENCY SERVICE |
| 635096 | \$357.90 | TROPHY CLUB PID NO 1 EMERGENCY SERVICE |
| 635097 | \$309.32 | TROPHY CLUB PID NO 1 EMERGENCY SERVICE |
| 635098 | \$419.73 | TROPHY CLUB PID NO 1 EMERGENCY SERVICE |
| 635099 | \$353.61 | TROPHY CLUB PID NO 1 EMERGENCY SERVICE |
| 635100 | \$364.17 | TROPHY CLUB PID NO 1 EMERGENCY SERVICE |
| 635101 | \$333.53 | TROPHY CLUB PID NO 1 EMERGENCY SERVICE |
| 635102 | \$394.17 | TROPHY CLUB PID NO 1 EMERGENCY SERVICE |
| 635103 | \$411.25 | TROPHY CLUB PID NO 1 EMERGENCY SERVICE |
| 635104 | \$210.51 | TROPHY CLUB PID NO 1 EMERGENCY SERVICE |
| 635105 | \$357.79 | TROPHY CLUB PID NO 1 EMERGENCY SERVICE |
| 635106 | \$273.85 | TROPHY CLUB PID NO 1 EMERGENCY SERVICE |
| 635107 | \$372.27 | TROPHY CLUB PID NO 1 EMERGENCY SERVICE |
| 635108 | \$413.04 | TROPHY CLUB PID NO 1 EMERGENCY SERVICE |
| 635109 | \$330.16 | TROPHY CLUB PID NO 1 EMERGENCY SERVICE |
| 635113 | \$312.06 | TROPHY CLUB PID NO 1 EMERGENCY SERVICE |
| 635114 | \$390.80 | TROPHY CLUB PID NO 1 EMERGENCY SERVICE |
| 635115 | \$373.96 | TROPHY CLUB PID NO 1 EMERGENCY SERVICE |
| 635116 | \$387.44 | TROPHY CLUB PID NO 1 EMERGENCY SERVICE |
| 635117 | \$386.76 | TROPHY CLUB PID NO 1 EMERGENCY SERVICE |
| 635118 | \$386.18 | TROPHY CLUB PID NO 1 EMERGENCY SERVICE |
| 635119 | \$368.81 | TROPHY CLUB PID NO 1 EMERGENCY SERVICE |
| 635120 | \$340.27 | TROPHY CLUB PID NO 1 EMERGENCY SERVICE |
| 635121 | \$403.80 | TROPHY CLUB PID NO 1 EMERGENCY SERVICE |
| 635122 | \$394.17 | TROPHY CLUB PID NO 1 EMERGENCY SERVICE |
| 635123 | \$358.89 | TROPHY CLUB PID NO 1 EMERGENCY SERVICE |
| 635124 | \$334.88 | TROPHY CLUB PID NO 1 EMERGENCY SERVICE |
| 635125 | \$373.79 | TROPHY CLUB PID NO 1 EMERGENCY SERVICE |
| 635126 | \$363.56 | TROPHY CLUB PID NO 1 EMERGENCY SERVICE |
| 635127 | \$309.95 | TROPHY CLUB PID NO 1 EMERGENCY SERVICE |
| 635128 | \$273.85 | TROPHY CLUB PID NO 1 EMERGENCY SERVICE |
| 635129 | \$387.44 | TROPHY CLUB PID NO 1 EMERGENCY SERVICE |
| 635130 | \$409.34 | TROPHY CLUB PID NO 1 EMERGENCY SERVICE |

|          |          |                                        |
|----------|----------|----------------------------------------|
| 635131   | \$390.78 | TROPHY CLUB PID NO 1 EMERGENCY SERVICE |
| 635133   | \$385.45 | TROPHY CLUB PID NO 1 EMERGENCY SERVICE |
| 635134   | \$404.79 | TROPHY CLUB PID NO 1 EMERGENCY SERVICE |
| 635135   | \$373.29 | TROPHY CLUB PID NO 1 EMERGENCY SERVICE |
| 635136   | \$337.42 | TROPHY CLUB PID NO 1 EMERGENCY SERVICE |
| 635137   | \$347.68 | TROPHY CLUB PID NO 1 EMERGENCY SERVICE |
| 635138   | \$303.21 | TROPHY CLUB PID NO 1 EMERGENCY SERVICE |
| 635139   | \$181.61 | TROPHY CLUB PID NO 1 EMERGENCY SERVICE |
| 635140   | \$350.49 | TROPHY CLUB PID NO 1 EMERGENCY SERVICE |
| 635141   | \$361.17 | TROPHY CLUB PID NO 1 EMERGENCY SERVICE |
| 635142   | \$353.07 | TROPHY CLUB PID NO 1 EMERGENCY SERVICE |
| 635143   | \$353.79 | TROPHY CLUB PID NO 1 EMERGENCY SERVICE |
| 635144   | \$371.94 | TROPHY CLUB PID NO 1 EMERGENCY SERVICE |
| 635145   | \$362.30 | TROPHY CLUB PID NO 1 EMERGENCY SERVICE |
| 635146   | \$382.45 | TROPHY CLUB PID NO 1 EMERGENCY SERVICE |
| 635147   | \$326.81 | TROPHY CLUB PID NO 1 EMERGENCY SERVICE |
| 635148   | \$377.33 | TROPHY CLUB PID NO 1 EMERGENCY SERVICE |
| 635149   | \$318.18 | TROPHY CLUB PID NO 1 EMERGENCY SERVICE |
| 635150   | \$370.59 | TROPHY CLUB PID NO 1 EMERGENCY SERVICE |
| 635151   | \$367.22 | TROPHY CLUB PID NO 1 EMERGENCY SERVICE |
| 635152   | \$359.14 | TROPHY CLUB PID NO 1 EMERGENCY SERVICE |
| 635153   | \$384.07 | TROPHY CLUB PID NO 1 EMERGENCY SERVICE |
| 635154   | \$397.00 | TROPHY CLUB PID NO 1 EMERGENCY SERVICE |
| 635155   | \$358.01 | TROPHY CLUB PID NO 1 EMERGENCY SERVICE |
| 635156   | \$303.50 | TROPHY CLUB PID NO 1 EMERGENCY SERVICE |
| 635157   | \$389.46 | TROPHY CLUB PID NO 1 EMERGENCY SERVICE |
| 635158   | \$297.82 | TROPHY CLUB PID NO 1 EMERGENCY SERVICE |
| 635159   | \$299.52 | TROPHY CLUB PID NO 1 EMERGENCY SERVICE |
| 635160   | \$350.38 | TROPHY CLUB PID NO 1 EMERGENCY SERVICE |
| 635161   | \$192.42 | TROPHY CLUB PID NO 1 EMERGENCY SERVICE |
| 635162   | \$360.48 | TROPHY CLUB PID NO 1 EMERGENCY SERVICE |
| 650739   | \$321.98 | TROPHY CLUB PID NO 1 EMERGENCY SERVICE |
| 657776   | \$178.58 | TROPHY CLUB PID NO 1 EMERGENCY SERVICE |
| 667200   | \$13.50  | TROPHY CLUB PID NO 1 EMERGENCY SERVICE |
| 667203   | \$12.20  | TROPHY CLUB PID NO 1 EMERGENCY SERVICE |
| 674251   | \$0.47   | TROPHY CLUB PID NO 1 EMERGENCY SERVICE |
| 681973   | \$167.59 | TROPHY CLUB PID NO 1 EMERGENCY SERVICE |
| 712035   | \$1.09   | TROPHY CLUB PID NO 1 EMERGENCY SERVICE |
| 730909   | \$127.62 | TROPHY CLUB PID NO 1 EMERGENCY SERVICE |
| 730930   | \$192.42 | TROPHY CLUB PID NO 1 EMERGENCY SERVICE |
| 733756   | \$220.37 | TROPHY CLUB PID NO 1 EMERGENCY SERVICE |
| 744759   | \$3.65   | TROPHY CLUB PID NO 1 EMERGENCY SERVICE |
| 942882   | \$0.69   | TROPHY CLUB PID NO 1 EMERGENCY SERVICE |
| 20446646 | \$10.72  | TROPHY CLUB PID NO 1 EMERGENCY SERVICE |
| 20447888 | \$28.46  | TROPHY CLUB PID NO 1 EMERGENCY SERVICE |



[www.FinanceDTA.com](http://www.FinanceDTA.com)

8117 PRESTON ROAD, SUITE 300  
DALLAS, TX 75225  
PHONE: (800) 969-4DTA

Public Finance  
Public-Private Partnerships  
Development Economics  
Clean Energy Bonds