

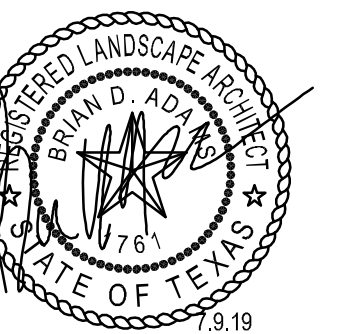
## Exhibit C



646 MILTON STREET, SUITE 426  
DALLAS, TEXAS 75206  
**WWW.GLENN-PARTNERS.COM**  
COPYRIGHT © 2017 GLENN|PARTNERS

**MEDLIN MIDDLE SCHOOL -  
ADDITION AND RENOVATION  
NORTHWEST INDEPENDENT SCHOOL DISTRICT**

601 PARKVIEW DRIVE  
TROPHY CLUB, TEXAS 76262

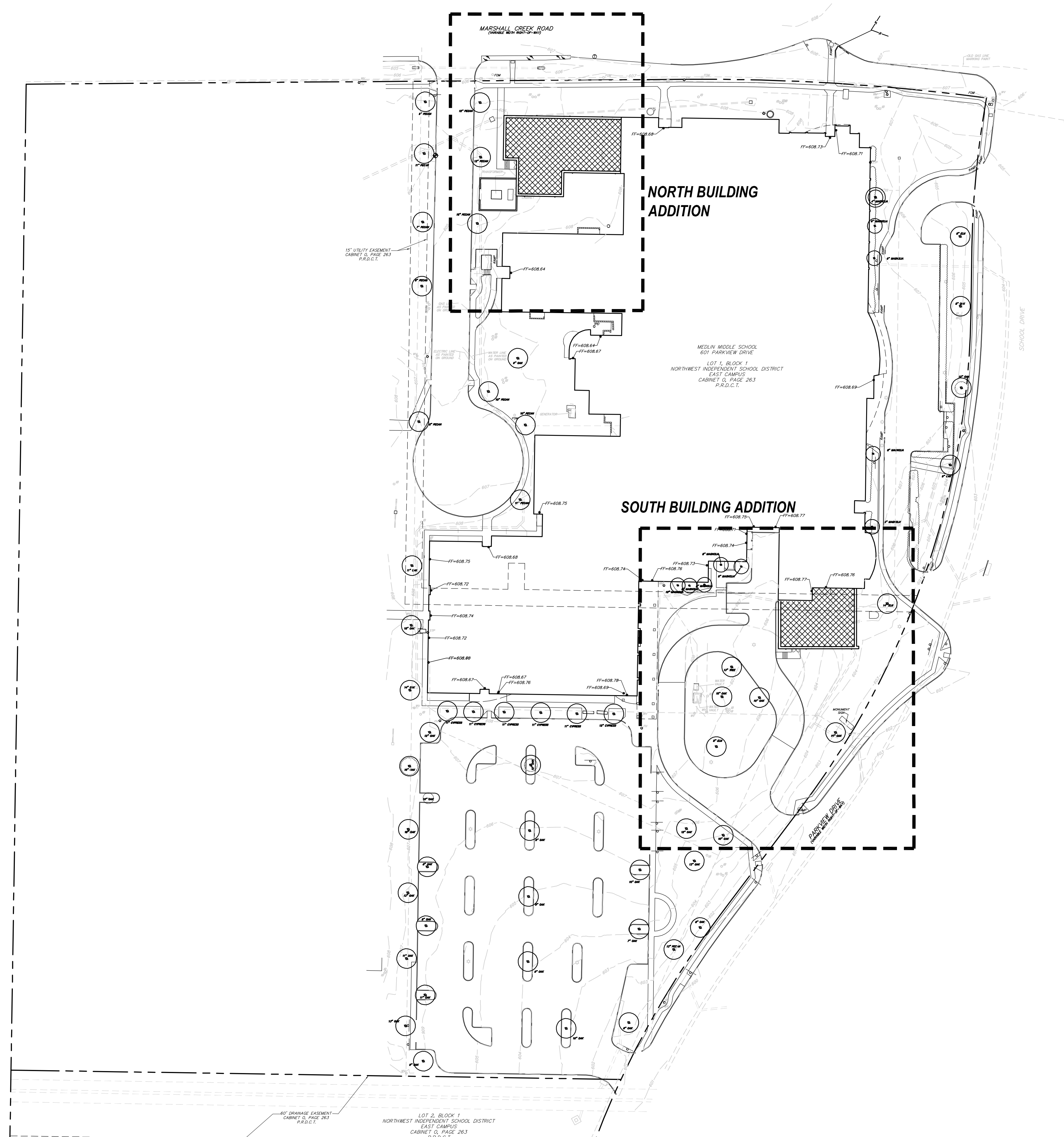
[illegible]

GLENN | PARTNERS PROJECT NO. 18-024

# L00-00

## LANDSCAPE KEY SHEET

**SITE PLAN APPLICATION**  
07.09.2019

LANDSCAPE TABULATIONS:  
NORTH BUILDING ADDITION

**PERIMETER LANDSCAPE REQUIREMENTS**  
Requirements: (1) tree, 3" cal. min. 6' ht. min., per 30 l.f. of perimeter- 135 l.f.

Required (5) trees, 3" cal.	Provided (6) trees, 3" cal.
--------------------------------	--------------------------------

**PARKING LOT** (0 spaces)  
Requirement: 10% of parking area shall be devoted to landscape area. (1) 4" cal. tree required for each 400 s.f. of required area. Parking lot islands shall be provided every 12 parking spaces and at the end of each row.

Required	Provided
NA	NA

LANDSCAPE TABULATIONS:  
SOUTH BUILDING ADDITION

**PERIMETER LANDSCAPE REQUIREMENTS**  
Requirements: (1) tree, 3" cal. min., 6' ht. min., per 30 l.f. of perimeter- 210 l.f.

Required	Provided
(7) trees, 4" cal.	(9) trees, 3" cal.

**PARKING LOT** (3 spaces)  
Requirement: 10% of parking area shall be devoted to landscape area. (1) 4" cal. tree required for each 400 s.f. of required area. Parking lot islands shall be provided every 12 parking spaces and at the end of each row.

Required	Provided
(1) tree, 3" cal.	(1) tree, 3" cal.

**TREE PRESERVATION PLAN SHEET 01 / 02 L00-01**



## 01 LANDSCAPE KEY SHEET

SCALE: 1" = 50'-0"

