

TROPHY CLUB PARK 2018

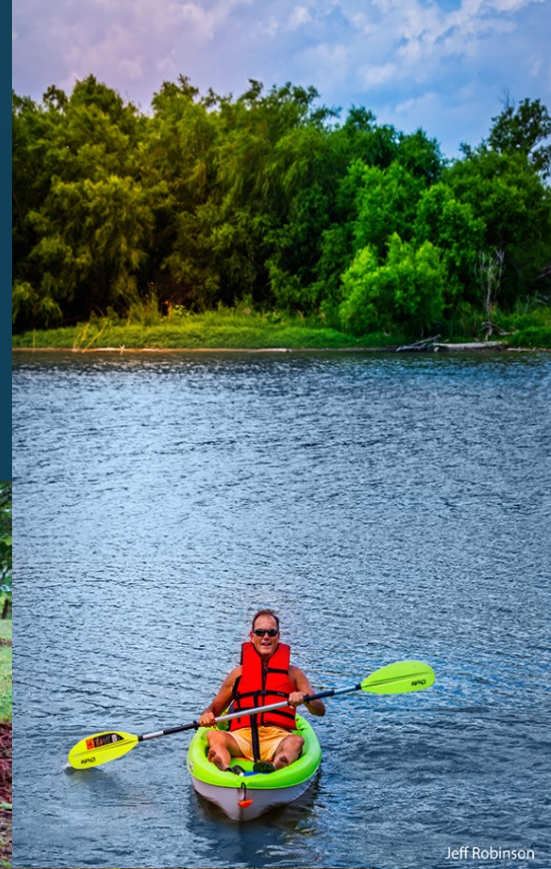


TROPHY CLUB PARK OBJECTIVES

- Protect the natural environment that is on the headwaters of Grapevine Lake while making it available for public enjoyment.
- Provides recreational needs for the community as it continues to grow.
- Preserve open space for the enjoyment of all visitors.
- Procure an area for environmental education.

WHAT DO WE OFFER?

- Nature Trails – 9.8 Miles & 6 Trail Heads
- Moto X Track – 6/10th Mile Track
- ATV Trails - 6 Miles
- Boat Ramp – Access to Lake Grapevine
- Fishing - Various native water life
- Equestrian Trails – 7 Miles
- Volunteer Opportunities
- Disc Golf – 18 hole course
- Open Space



EVENTS



Jeff Robinson

- Back to Nature
- Fall Family Campout
- Spring Family Campout
- Disc Golf Tournaments
- Creepy Crawly Summer Camps
- Night Under The Stars
- Park Cleanup Days (2019)

Fall Family Campout

TROPHY CLUB PARK
2885 TROPHY PARK DRIVE

Saturday, Nov. 10 - Sunday, Nov. 11



Archery Wildlife Demos Music
And MORE!

TROPHY CLUB
PARKS AND REC PRESENTS...

BACK TO NATURE

An event celebrating the great outdoors and Arbor Day
AT TROPHY CLUB PARK

MARCH 18 • 11-2 PM

WILDLIFE DEMOS•HORSE RIDES•KAYAKING
FLY-FISHING•FOOD•CRAFTS•AND MORE!



SPRING FAMILY CAMPOUT

TROPHY CLUB PARK
2885 TROPHY PARK DRIVE



Saturday, April 7 - Sunday, April 8

3:00pm Sat. - 10:00am Sun.

\$15.00 per person

Dinner and Breakfast Included

CURRENT PROJECTS

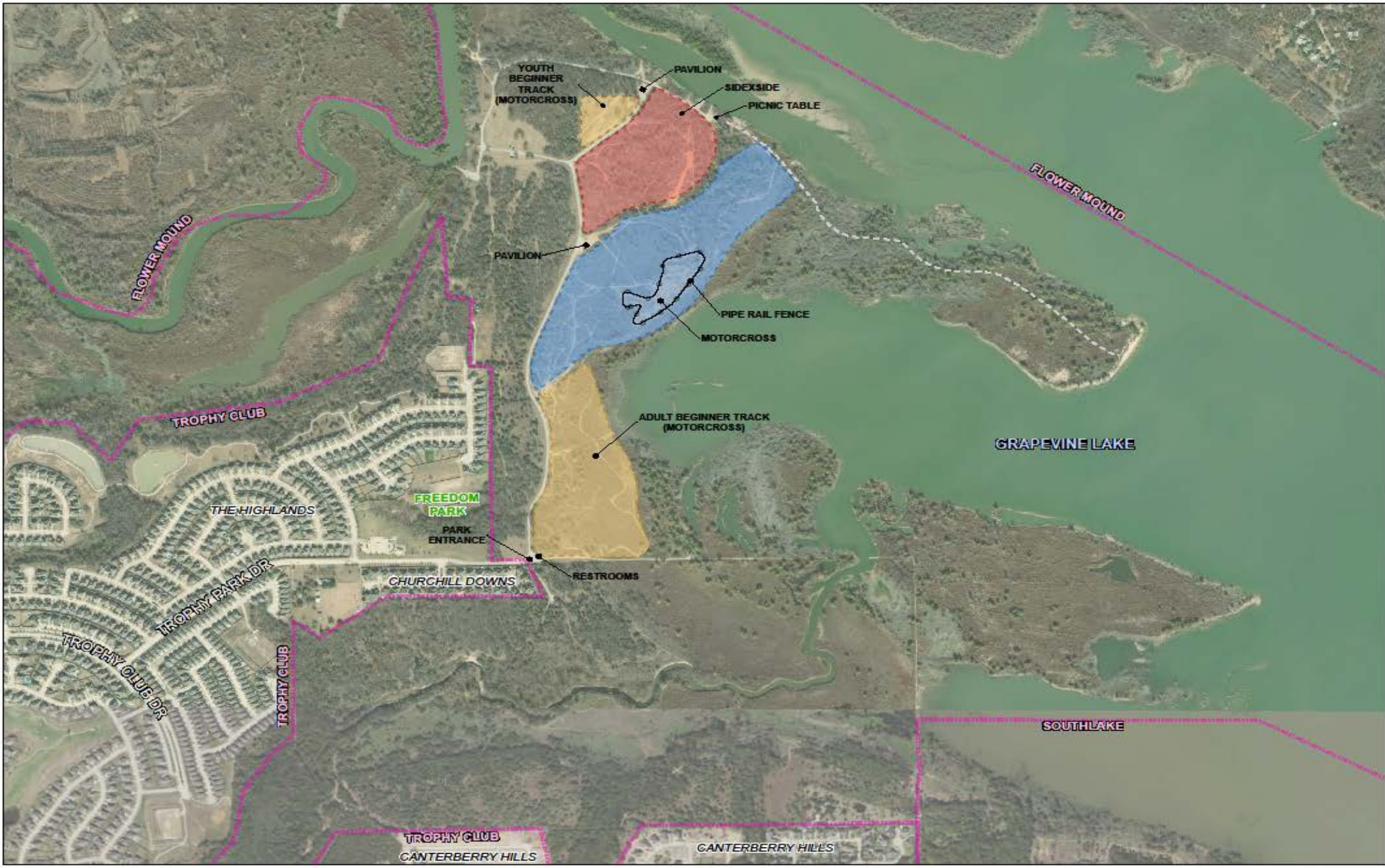
- Trimming of trees/Beautification of boat ramp area;
- Painting of guard shack/Restrooms;
- Painting of pipe rail fence along east side of park;
- Use of VENTEK to track resident/non-resident entry into park;
- New disc golf signage, course markers and kiosk;
- Replacement of pavilions;
- Replacement of grills;
- Road Repair;
- New website; and
- Research/applying for new grants.



Phase 1

- New elevated Moto X track. Elevation designed to help with rainouts.
- Pipe rail fencing outlining the new elevated Moto X track.
- Extension and leveling of preexisting parking lots.
- Construction of additional pavilions along the parking area. Pavilions reinforced to help withstand flooding.
- New park signage to represent the new additions within the park.





Trophy Club Park attracts users from Trophy Club and the surrounding Metro-Plex



Nature is in your backyard!



Jeff Robinson



PHASE 2

- Construction of new UTV Side by Side track.
- Redesign Trails/Tracks 1&2.
- Apply for Road/Asphalt Grants.



Make Memories at Trophy Club Park

