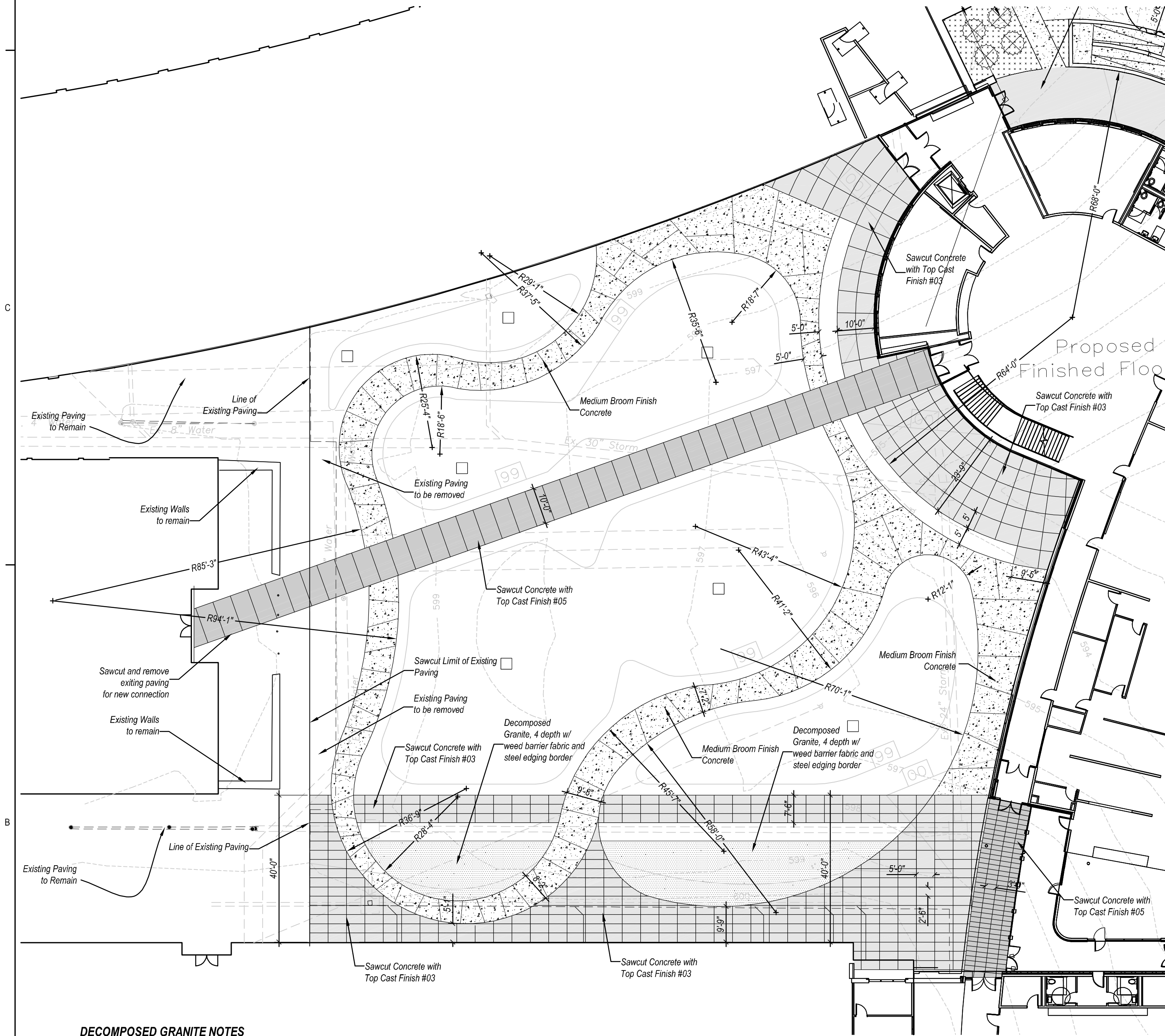


Exhibit K



DECOMPOSED GRANITE NOTES

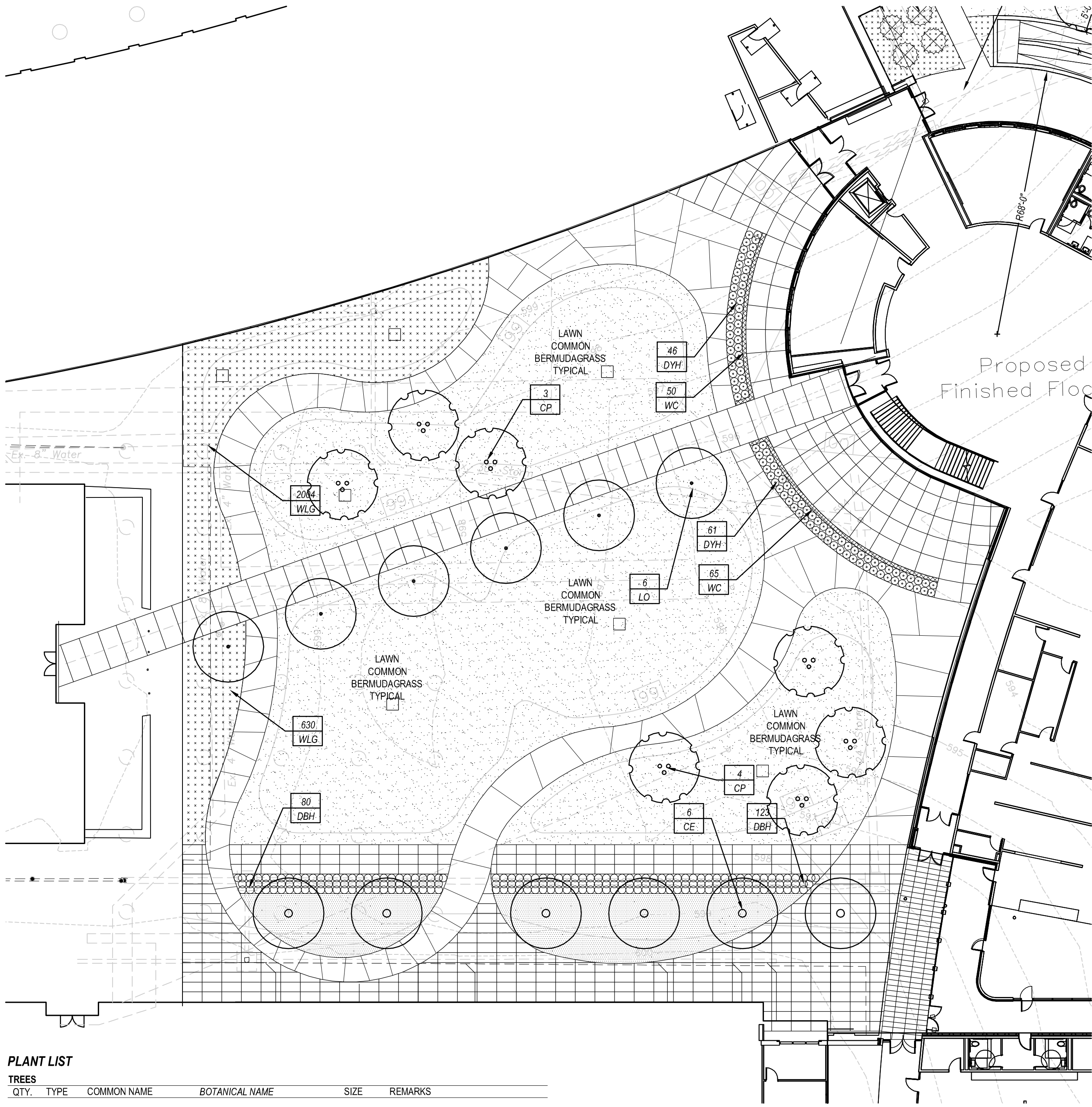
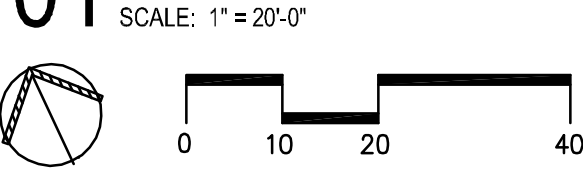
- Provide Decomposed Granite with 'Stabilizer' Binder additive surfacing as indicated on drawings.
- Submit representative samples of items specified for approval by Landscape Architect, Architect and Owner.
- Decomposed Granite base material shall consist of a natural material mix of granite aggregate not to exceed 1/8" diameter in size and various stages of decomposed earth base.
- Filter Fabric: Fabric shall be 'Miracast', non-woven needle punched fabric made from polypropylene, non-biodegradable, inert to soil chemicals, acids and alkalines over a pH range of 3 - 12, as manufactured by MIRAFI Inc., or approved equal.
- 'Stabilizer' Binder additive to be provided by: Stabilizer Solutions  
1 (800) 336-2468; www.stabilizersolutions.com  
Blend to be 12 - 16 lbs. of Stabilizer per ton of Decomposed Granite, thoroughly mixed throughout.
- Provide grade stakes at 10 foot centers to insure grade points indicated on drawings are met. Insure scope of subgrade and finish surface meets cross sections indicated in details.
- Prepare subgrade by excavating existing material soils to a maximum depth of 4".
- After excavation, rototill or scarify top 1 inch of subgrade and compact to 95% standard proctor using double drum, single drum or automatic hand tampers.
- Install filter fabric in bottom of excavation to limits of path.
- Place four (4) inches of Decomposed Granite with 'Stabilizer' Binder over a dry sub-base. Do not install on wet sub-base. Provide compaction of material to maximum limits with automatic hand tampers in one inch lifts, unless noted otherwise on details. Compact to achieve a tight material matrix.
- Provide ten (10) 50 lbs. bags of pre-mixed Decomposed Granite for future use in repair and maintenance.
- The Contractor shall construct a sample panel 5'-0" x 5'-0" on site, at no expense to the Owner, for approval by the Landscape Architect / Owner prior to commencing work.
- The Landscape Architect reserves the right to reject any and all work executed by the Contractor which does not meet his/her expectations and the Manufacturer's Specifications.

CONCRETE NOTES

- All concrete shall be in accordance with the A.C.I. standard 'Building Code Requirements for Reinforced Concrete' (A.C.I. 318) latest revision.
- All reinforcing steel shall be new domestic deformed billet steel conforming to ASTM A615, Grade 60 (60,000 PSI yield point).
- Reinforcing bar supports and spacers shall be provided in accordance with the Manual of Standard Practice by the Concrete Reinforcing Steel Institute.
- Concrete shall have a minimum compressive strength at 28 days of 3000 PSI.
- Grade beam concrete protection of reinforcement shall be 2" minimum top and sides, 3" minimum bottom.
- Maximum nominal coarse aggregate sizes for concrete in the slabs-on-grade shall be 3/4".
- Concrete slumps shall be 4" maximum, 2" minimum.



01 COURTYARD HARDSCAPE PLAN



PLANT LIST

TREES						
QTY.	TYPE	COMMON NAME	BOTANICAL NAME	SIZE	REMARKS	
6	CE	Cedar Elm	Ulmus crassifolia	4" cal.	B&B, 15' ht., 6" spread min., matching	
6	LO	Live Oak	Quercus virginiana	4" cal.	B&B, 15' ht., 6" spread min.	
7	CP	Chinese Pistache	Pistacia chinensis	4" cal.	B&B, 14' ht., 6" spread min.	

SHRUBS						
QTY.	TYPE	COMMON NAME	BOTANICAL NAME	SIZE	REMARKS	
111	DYH	Dwarf Yaupon Holly	Ilex vomitoria nana	5 gal.	container, full plant, 24" o.c.	
203	DBH	Dwarf Burfordi Holly	Ilex cornuta 'Burfordi nana'	5 gal.	container, full plant, 24" o.c.	

GROUNDCOVERS						
QTY.	TYPE	COMMON NAME	BOTANICAL NAME	SIZE	REMARKS	
2,634	WLG	Weeping Lovegrass	Eragrostis curvula	4" pots	container, full top of container, 12" o.c.	
115	WC	Wintercreeper	Euronymus fortunei coloratus	4" pots	container, (3) 12" runners min, 12" o.c.	
		Common Bermudagrass	Cynodon dactylon	roll sod	solid sod, refer to notes	

NOTE: Plant list is an aid to bidders only. Contractor shall verify all quantities on plan. All heights and spreads are minimums. All plant material shall meet or exceed remarks as indicated. All trees to have straight trunks and be matching within varieties.

LANDSCAPE NOTES

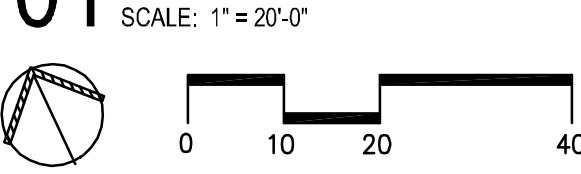
- Contractor shall verify all existing and proposed site elements and notify Architect of any discrepancies. Survey data of existing conditions was supplied by others.
- Contractor shall locate all existing underground utilities and notify Architect of any conflicts. Contractor shall exercise caution when working in the vicinity of underground utilities.
- Contractor is responsible for obtaining all required landscape and irrigation permits.
- Contractor to provide a minimum 2% slope away from all structures.
- All planting beds and lawn areas to be separated by steel edging. No steel to be installed adjacent to sidewalks or curbs.
- All landscape areas to be 100% irrigated with an underground automatic irrigation system and shall include rain and freeze sensors.
- All lawn areas to be Solid Sod Bermudagrass, unless otherwise noted on the drawings.

GENERAL LAWN NOTES

- Fine grade areas to achieve final contours indicated on civil plans.
- Adjust contours to achieve positive drainage away from buildings. Provide uniform rounding at top and bottom of slopes and other breaks in grade. Correct irregularities and areas where water may stand.
- All lawn areas to receive solid sod shall be left in a maximum of 1" below final finish grade. Contractor to coordinate operations with on-site Construction Manager.
- Imported topsoil shall be natural, friable soil from the region, known as bottom and soil, free from lumps, clay, toxic substances, roots, debris, vegetation, stones, containing no salt and black to brown in color.
- All lawn areas to be fine graded, irrigation trenches completely settled, and finish grade approved by the Owner's Construction Manager or Architect prior to installation.
- All rocks 3/4" diameter and larger, dirt clods, sticks, concrete spoils, etc. shall be removed prior to placing topsoil and any lawn installation.
- Contractor shall provide (1") one inch of imported topsoil on all areas to receive lawn.



01 COURTYARD LANDSCAPE PLAN



SOLID SOD NOTES

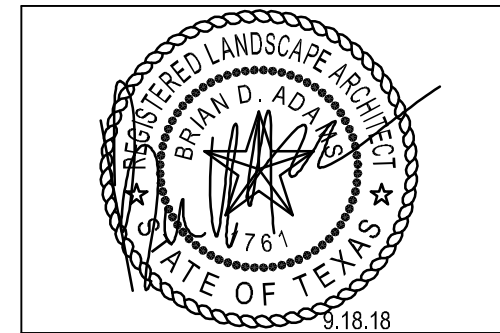
- Fine grade areas to achieve final contours indicated. Leave areas to receive topsoil 3" below final desired grade in planting areas and 1" below final grade in turf areas.
- Adjust contours to achieve positive drainage away from buildings. Provide uniform rounding at top and bottom of slopes and other breaks in grade. Correct irregularities and areas where water may stand.
- All lawn areas to receive solid sod shall be left in a maximum of 1" below final finish grade. Contractor to coordinate operations with on-site Construction Manager.
- Contractor to coordinate with on-site Construction Manager for availability of existing topsoil.
- Plant sod by hand to cover indicated area completely. Insure edges of sod are touching. Top dress joints by hand with topsoil to fill voids.
- Roll grass areas to achieve a smooth, even surface, free from unnatural undulations.
- Water sod thoroughly as sod operation progresses.
- Contractor shall maintain all lawn areas until final acceptance. This shall include, but not limited to: mowing, watering, weeding, cultivating, cleaning and replacing dead or bare areas to keep plants in a vigorous, healthy condition.
- Contractor shall guarantee establishment of an acceptable turf area and shall provide replacement from local supply if necessary.
- If installation occurs between September 1 and March 1, all sod areas to be over-seeded with Winter Ryegrass, at a rate of (4) pounds per one thousand (1000) square feet.

PERKINS + WILL

2218 BRYAN STREET  
SUITE 200  
DALLAS, TEXAS 75201  
1214.283.8700  
1214.283.8701  
www.perkinswill.com

CONSULTANTS

CIVIL  
RLK ENGINEERING, INC.  
111 WEST MAIN STREET  
ALLEN, TEXAS 75013  
STRUCTURAL  
LA. FUESS PARTNERS, INC.  
3333 LEE PARKWAY, SUITE 300  
DALLAS, TEXAS 75219  
MEP  
ESTES, MCCLURE & ASSOCIATES, INC.  
3608 WEST WAY  
TYLER, TEXAS 75703  
LANDSCAPING  
SMR LANDSCAPE ARCHITECTS, INC.  
1708 NORTH GRIFFIN STREET  
DALLAS, TEXAS 75202  
TECHNOLOGY  
MOYE CONSULTING  
1255 CORPORATE DRIVE, SUITE 100  
IRVING, TEXAS 75038  
FOOD SERVICE  
JMK FOODSERVICE CONSULTING & DESIGN  
3431 LAKEVIEW PARKWAY, SUITE 205  
ROWLETT, TEXAS 75088  
GENERAL CONTRACTOR  
NORTHSTAR BUILDERS GROUP  
270 NORTH DENTON TAP ROAD, SUITE 250  
CORPELL, TEXAS 75019



PROJECT



BYRON NELSON HIGH  
PHASE II  
2775 BOBCAT BOULEVARD  
TROPHY CLUB, TEXAS 76262

NORTHWEST ISD  
2001 TEXAN DRIVE  
JUSTIN, TEXAS 76247

SITE PLAN RE-SUBMITTAL 09/18/2018

MARK	ISSUE	DATE
Job Number	143117.000	
Drawn	BDA	
Checked	BDA	
Approved	BDA	

INTERIOR COURTYARD  
LANDSCAPE PLAN

SHEET NUMBER

L01-02